

THE BARNET LONG ROOM **CUSTOMS HOUSE**

VENUE SPECIFICATIONS

Issue 6 | June 2018

The Barnet Long Room, Customs House Venue Specifications

| VENUE SPACES AND CAPACITY | | | | | | |
|---------------------------|---------|-----------|--------------|--------|--------------------|-------------------|
| | Theatre | Classroom | Dinner Dance | Dinner | Cocktail Reception | Exhibition |
| Barnet Long Room | 150 | 96 | 100 | 140 | 200 | 200m ² |
| VIP Boardroom | - | - | - | - | 20 | 48m ² |
| Pre - Function Lounge | - | - | - | - | 100 | 105m ² |
| Balcony | - | - | - | - | 100 | 75m ² |

There is a maximum capacity on Level 1 at any time of 200 persons. The Hirer must not issue tickets or invitations for more than these maximum numbers.

The Barnet Long Room (Main Room)

| | |
|---|--|
| Main glass doors | 1.06m width x 2.56 height |
| Main wooden doors | 1.08m width x 2.56m height |
| Emergency exit doors (onto rear stage) | 68cm width - push bars 73cm width - push bars pushed in 1.1m height of push bar 2.58m height |
| Dimensions | 25.0 m x 7.8 m |
| Ceiling Height | 5.0 m |
| Stage Height | 830mm |
| Stage | 7.8 m x 3.0 m Permanent staging is located at both ends of the main room. |
| Stage Load Rating | 300kg per square meter |
| Lighting | Dimmable Room Lighting Dimmable Wall Wash Ceiling Wash (12 colours available) |
| Windows | The windows in the main room are fitted with automated blinds that can be individually controlled. |
| Loading Dock and Lift | 2.1m x 4.2m x 2.8m height |

**Please note, to access the loading dock needs to be discussed at the production meeting. Vehicle registration details and arrival times will be required - please note there is a 20 minute limit to access of the loading dock.*

VIP Board Room

| | |
|-------------------------------|---------------|
| Board Room table seats | 10 pax. |
| Floor space | 8.2 m x 6.2 m |

Pre-Function Lounge

The Pre-Function lounge comprises three (3) interconnected rooms. The balcony is accessible directly from the Pre-Function Lounge and the space is furnished with lounge chairs, floating lounges and side tables.

Dimensions

| | |
|--------|---------------|
| Room 1 | 8.0 m x 4.4 m |
| Room 2 | 5.0 m x 5.0 m |
| Room 3 | 7.5 m x 5.7 m |

Pre-function doors 1.13m width x 2.1m height

Ceiling Height 4.3 m

Picture rails at 3.1m from the floor are positioned around the perimeter of the Pre-Function Lounge covering 39m in length. Hanging fixtures are not included with venue hire.

The Balcony

A spacious balcony running the length of the main room and overlooking Customs Square is accessible from the Barnet Long Room, VIP Boardroom and Pre-Function Lounge.

Floor space 25.0 m x 3.3 m

AV Equipment and Facilities

STANDARD AUDIO EQUIPMENT

**Please note, additional audio equipment can be hired to augment the system and would require an Audio technician for a minimum four (4) hour call at an additional cost.*

Barnet Long Room

Audio

1x Black Lectern with Microphone (front panel 845mm x 540mm)
 1x Shure UR4Q Quad Channel Radio receiver (additional charge)
 2 x Shure UR Handheld SM58 Radio Mics (additional charge)
 2 x Shure UR Handheld SM86 Radio Mics (additional charge)
 4 x Shure UR Body packs with Lapel Mics (additional charge)
 2 x Meyer UPJ Loudspeakers
 PC/mp3 Audio Input
 Yamaha QL 1 (additional charge)
**Please note, only 4 radio mics can be used at one time.*

Vision

1 x EPSON EB-G6900WUNL Projector (6000 lumen; ceiling mounted)
 1 x Motorised Projection Screen (10' x 7.5")
 HDMI input (Western, Eastern Stage and rack)
 SDI input (Tie lines on Western and Eastern Stage, routing to rack)
 1 x ATEM Television Studio switcher (additional charge)
 1 x 27" Samsung Foldback screen (additional charge)

Lighting

2x Selecon 650w Fresnel (focussed as lectern and head table spots)
 - 2 x Ceiling Mounted Lighting Bars – Load Rating: 50kg per lineal metre
 (12 dimmer outlets on each, linked as pairs)

Patch Bays

8 x XLR inputs (6 x mic, 2 x line) 2 x XLR Output
 2 x Fibre port
 2 x SDI tie lines
 4 x Data port
 1 x DMX input

Input list per patch bay

Patch bays are located on both eastern and western stages. Signal sent to master patch bay in VIP Boardroom which enables patching through to system processor and projector.

Touch Screen

Source – Projector Input (computer, SDI, blank screen)
 Volume – Master Volume for Barnet Long Room, adjacent rooms and Balcony.
 Audio – Volume/Mute Controls for Mic and Line Inputs
 Lights – House and Stage Lighting Controls
 Blinds – Up, Down and Stop Screen – Up, Down and Stop
Touch Screens located at eastern and western stages (lighting only), eastern stage controls audio and vision.

Power

1 x 32 Amp 3-phase outlet (located outside the Pre-Function entry door)
 1 x 32 Amp 3-phase outlet (located on the eastern stage)
 32 x GPO's throughout

Pre-Function Rooms

Audio

4 x JBL Control 25T Speakers
 8 x JBL Control 26C Ceiling Speakers
 Australian Monitor IS1200 Power Amplifier
 2 x Australian Monitor SY400V Power Amplifier

Vision

1 x Sony Experia 65" LCD screen on portable stand (additional charge)

Power

1 x 32 Amp 3-phase outlet (*located outside the Pre-Function entry door*)
 6 x GPO's (*2 located in each room*)

VIP Boardroom

Power

2 x GPO's (*2 located in each room*)

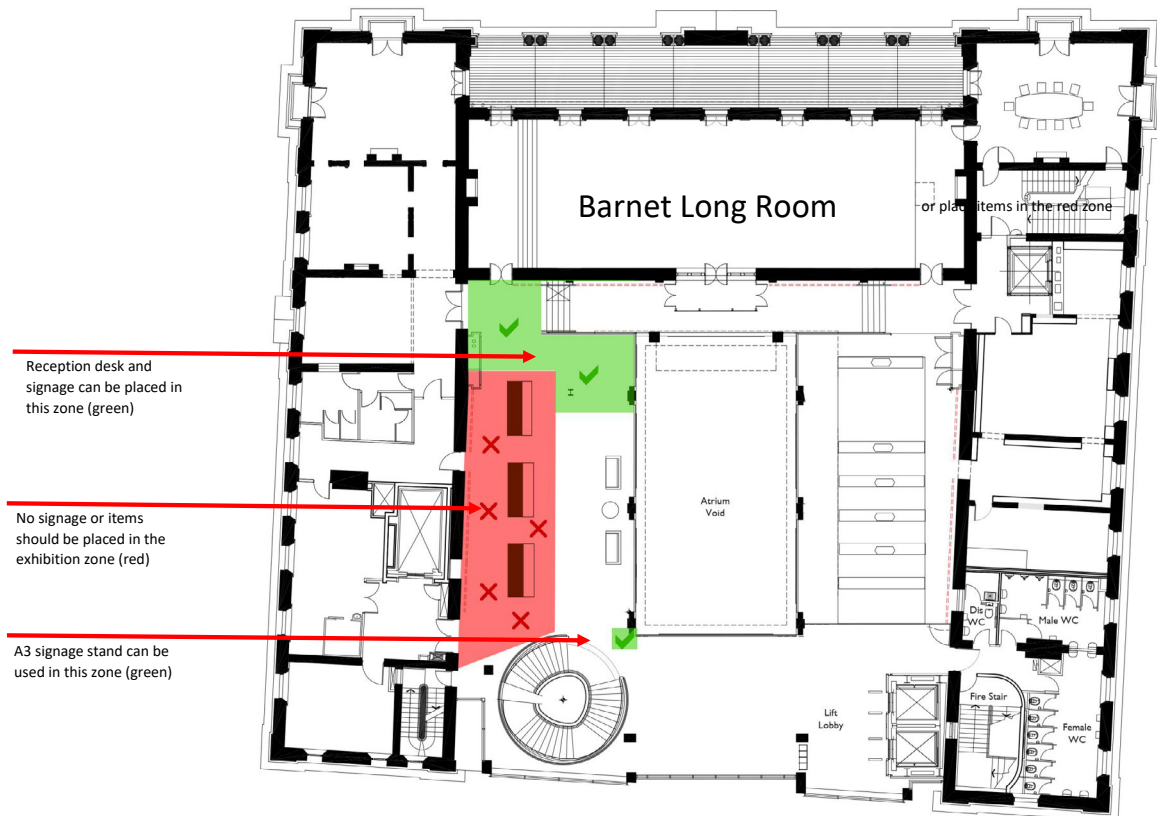
Balcony

6 x JBL Control 25 Speakers (*ability to mute or run concurrently with Barnet Long Room*)
 Australian Monitor SY400V Power Amplifier

Furniture available

170 x Black Conference Chair (Overall Height: 845mm, Seat Height: 466mm, Width: 545mm, Depth: 510mm)
 15 x Round banquet tables (1675mm diameter x 740mm high, 32kgs)
 5 x High bar tables + 12 x stools (balcony furniture)
 20 x 7ft Trestle tables (2135mm x 610mm)
 4 x 6ft Trestle tables (1830mm x 760mm)
 Board room furniture – Board table and 10 directors chairs
 4 x Adjustable Bar Rounds (diameter x 910 mm, weight 24kg)
 10 x A1 Flipchart/Whiteboard
 5 x Case Ottomans
 10 x Pert single seater lounge

The Barnet Long Room, Customs House Signage Placement



Ground Floor

- ✓ 1 x A3 sign stand at the ground floor staircase (provided)
- ✗ No other signage

First Floor

- ✓ 1 x A3 sign stand at the top of the stair case (provided)
- ✓ Signage in the green zone
- ✗ No signage in the red zone
- ✗ Please do not move the lights on the lighting track