

**FIGURE 12
CENTENNIAL PARK
HAZARD CATEGORIES
5% AEP EVENT**

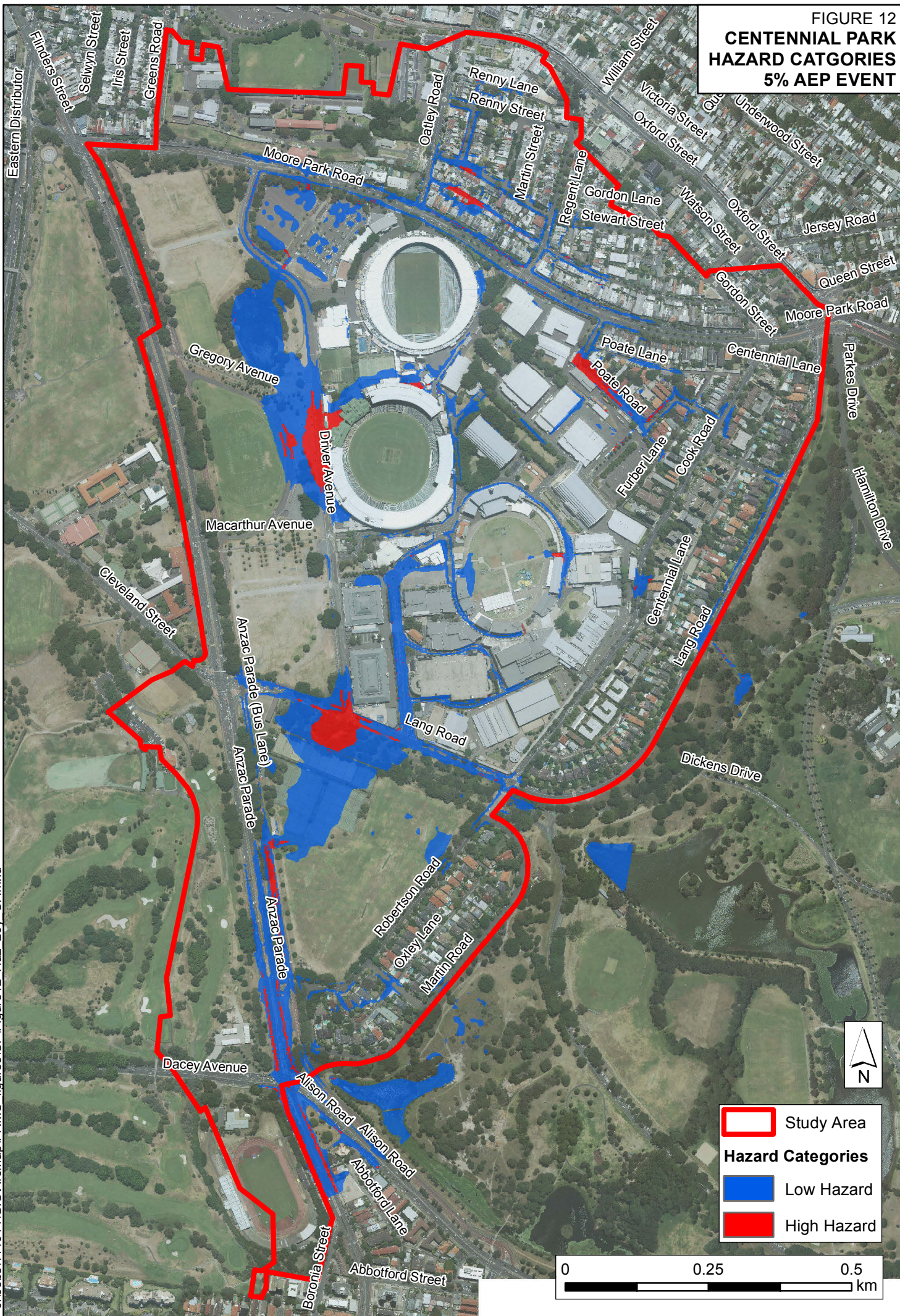
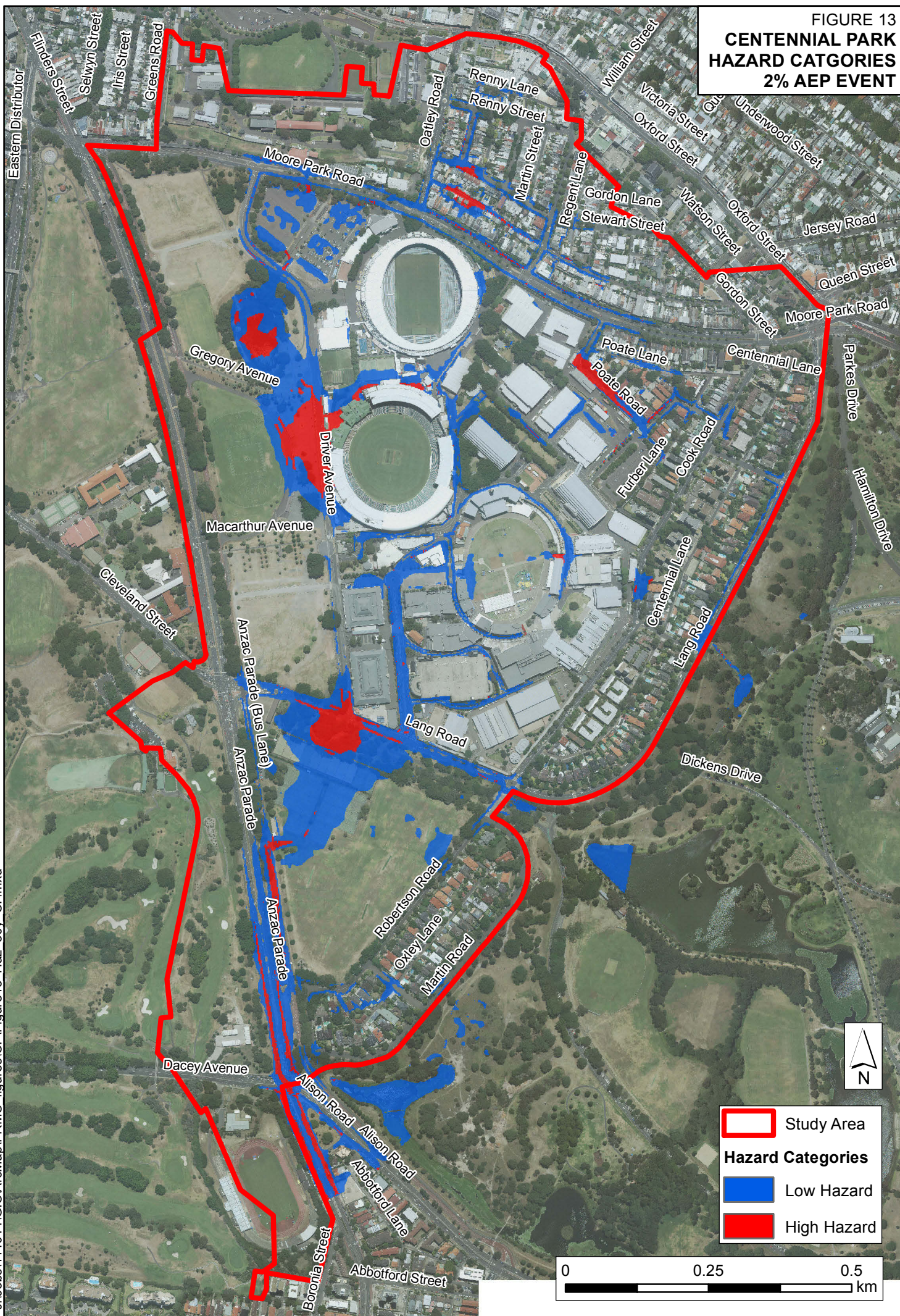
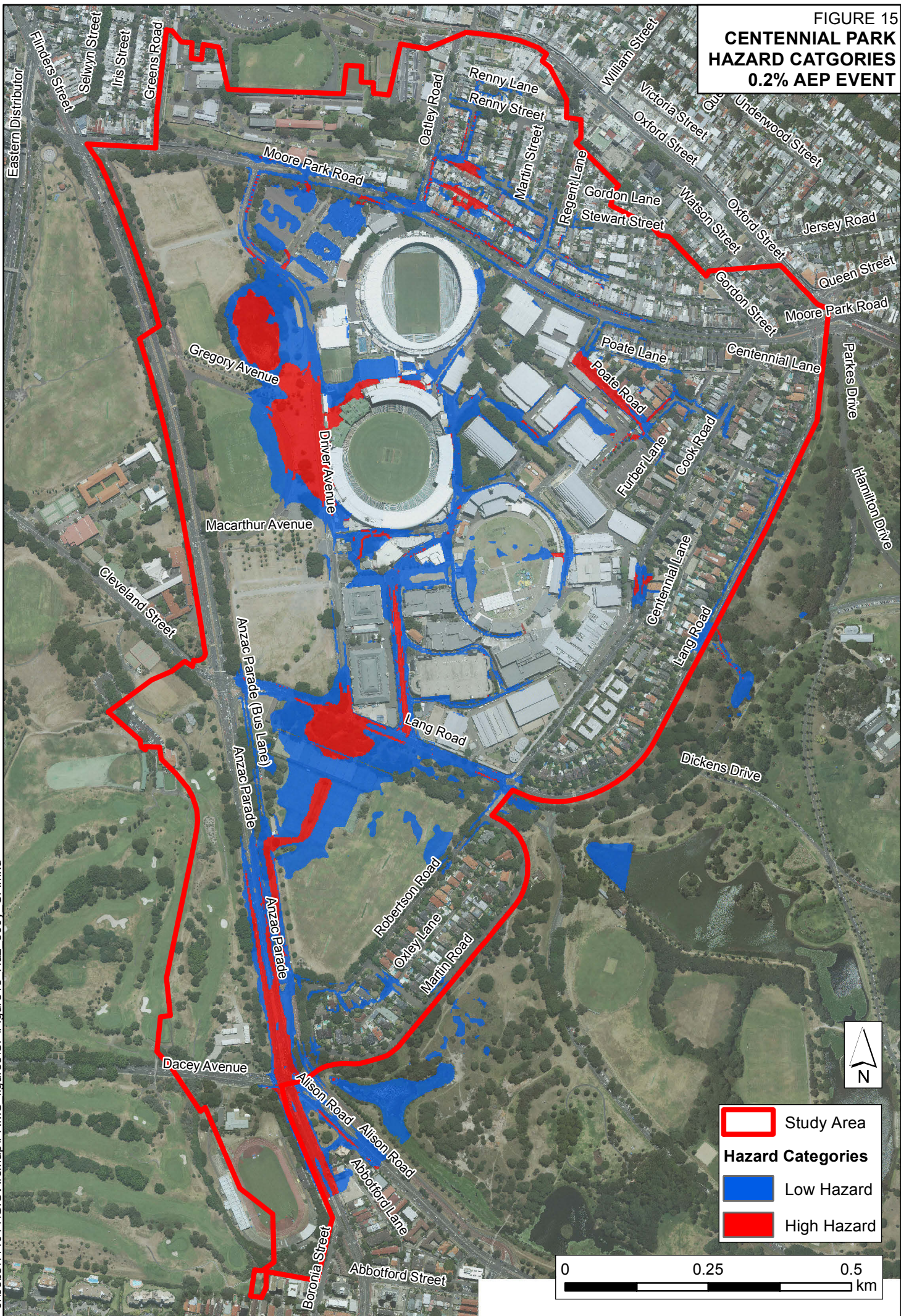


FIGURE 13
CENTENNIAL PARK
HAZARD CATEGORIES
2% AEP EVENT



**FIGURE 15
CENTENNIAL PARK
HAZARD CATEGORIES
0.2% AEP EVENT**



J:\Jobs\114014\GIS\ArcMap\FRMS_figures\CP\Figure15_Haz_500y_CP.mxd

Study Area

Hazard Categories

- Low Hazard
- High Hazard

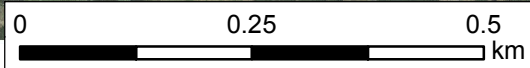


FIGURE 16
CENTENNIAL PARK
HAZARD CATEGORIES
PMF EVENT

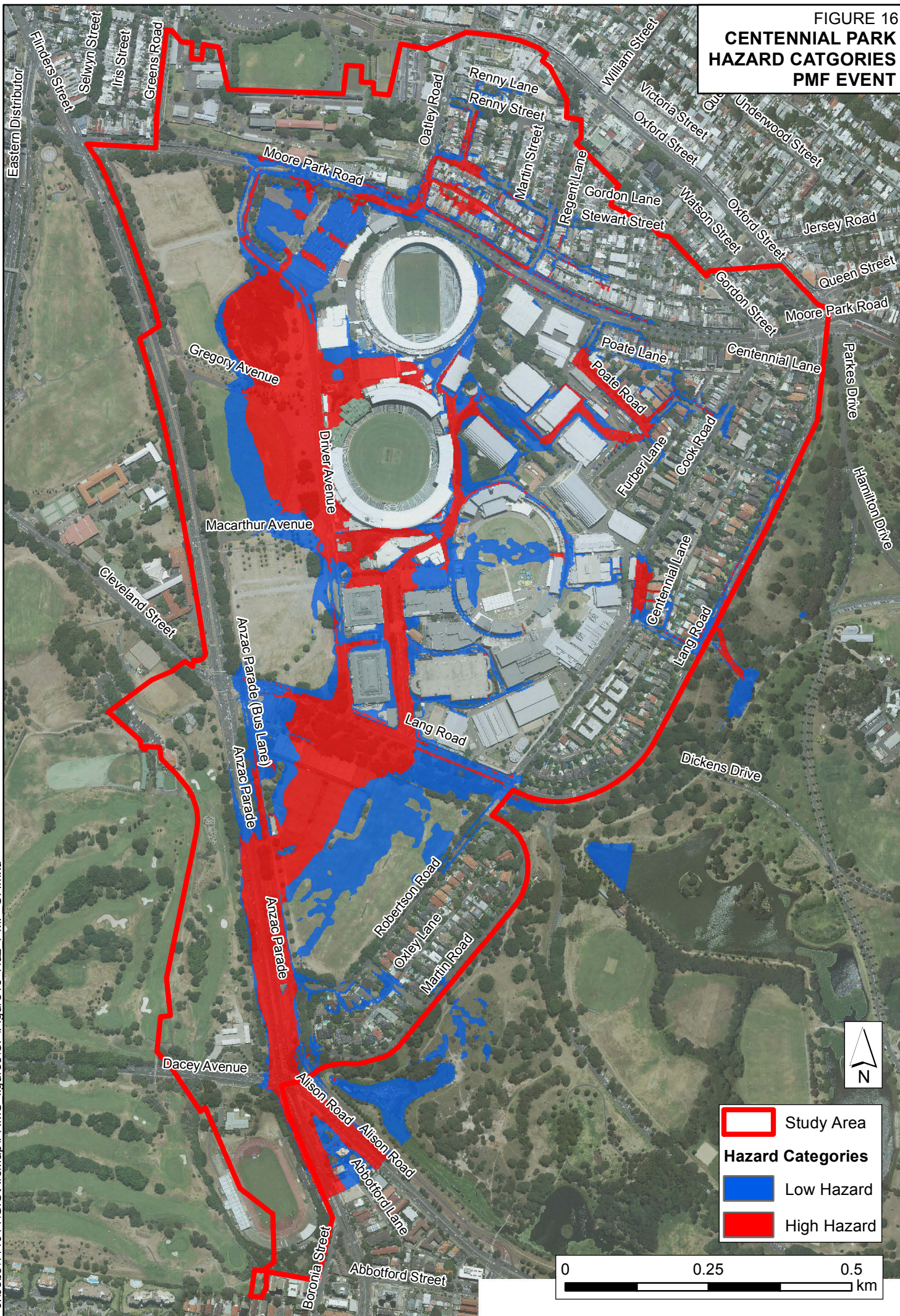
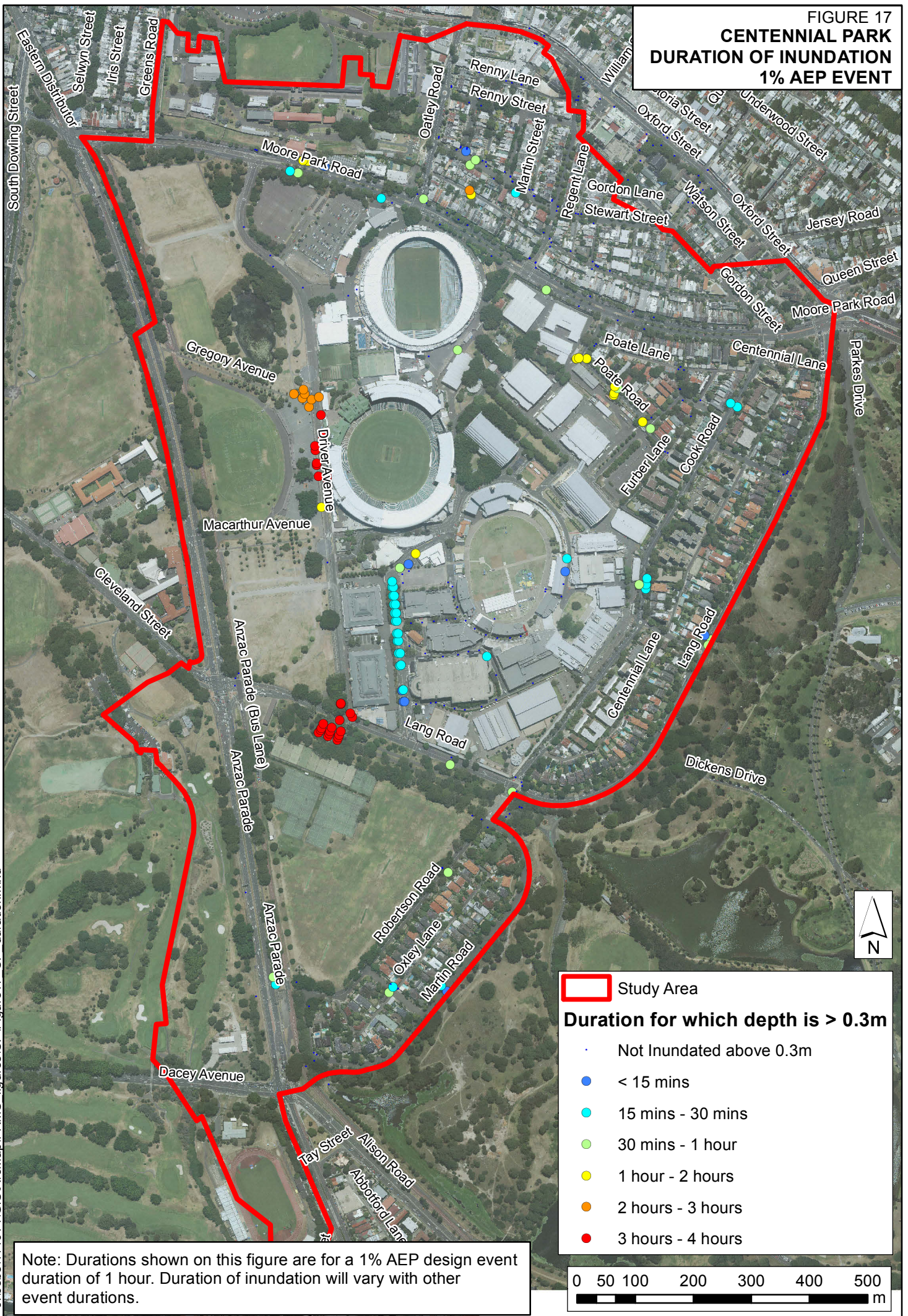


FIGURE 17
**CENTENNIAL PARK
 DURATION OF INUNDATION
 1% AEP EVENT**



Study Area

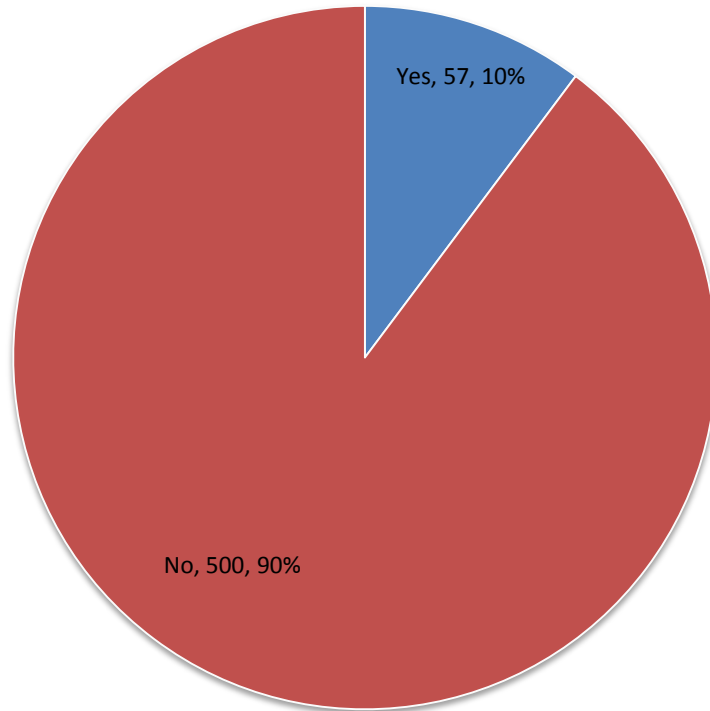
Duration for which depth is > 0.3m

- Not Inundated above 0.3m
- < 15 mins
- 15 mins - 30 mins
- 30 mins - 1 hour
- 1 hour - 2 hours
- 2 hours - 3 hours
- 3 hours - 4 hours

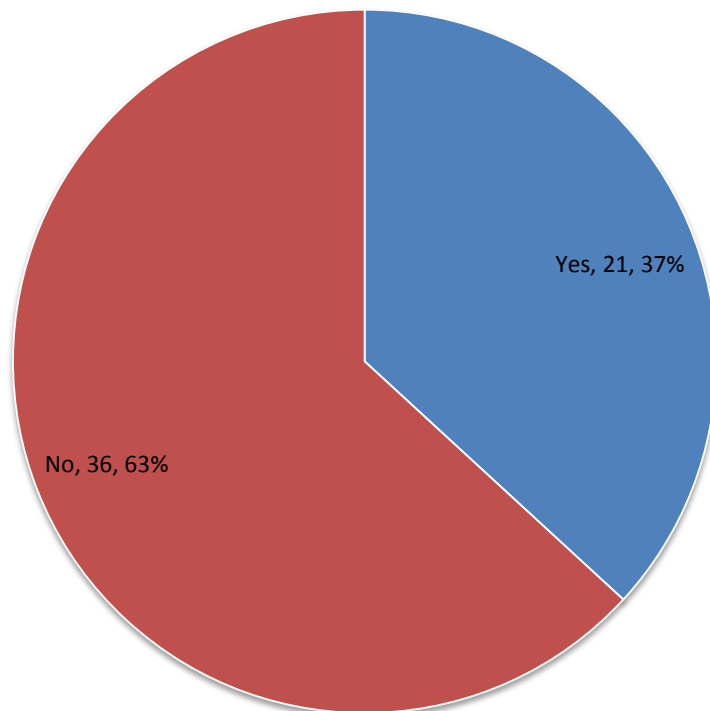


Note: Durations shown on this figure are for a 1% AEP design event duration of 1 hour. Duration of inundation will vary with other event durations.

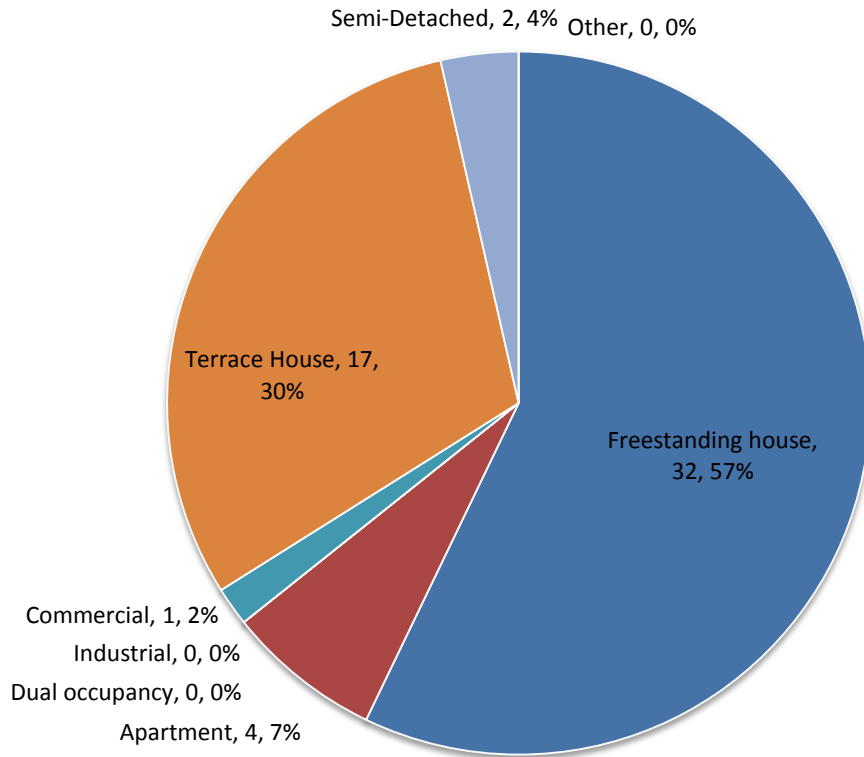
A: Number of Respondents



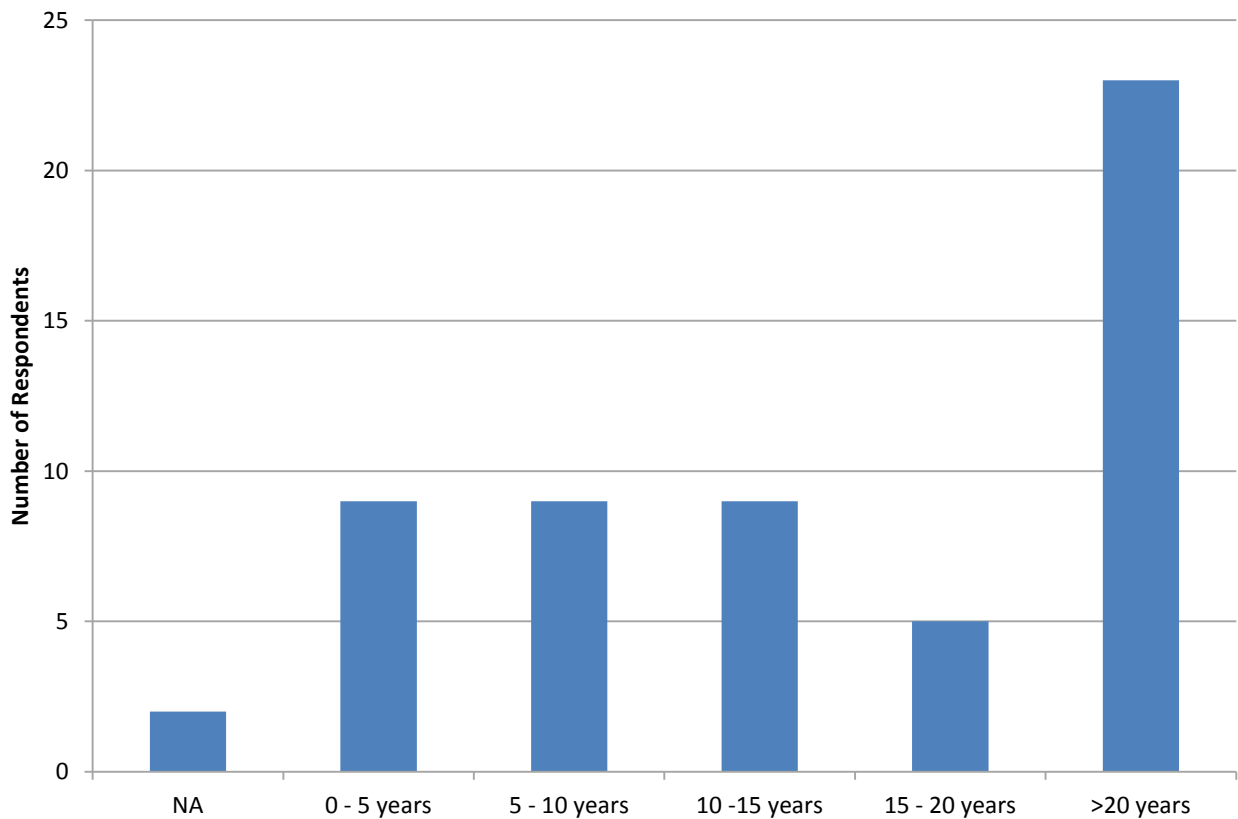
B: Flooding Experience



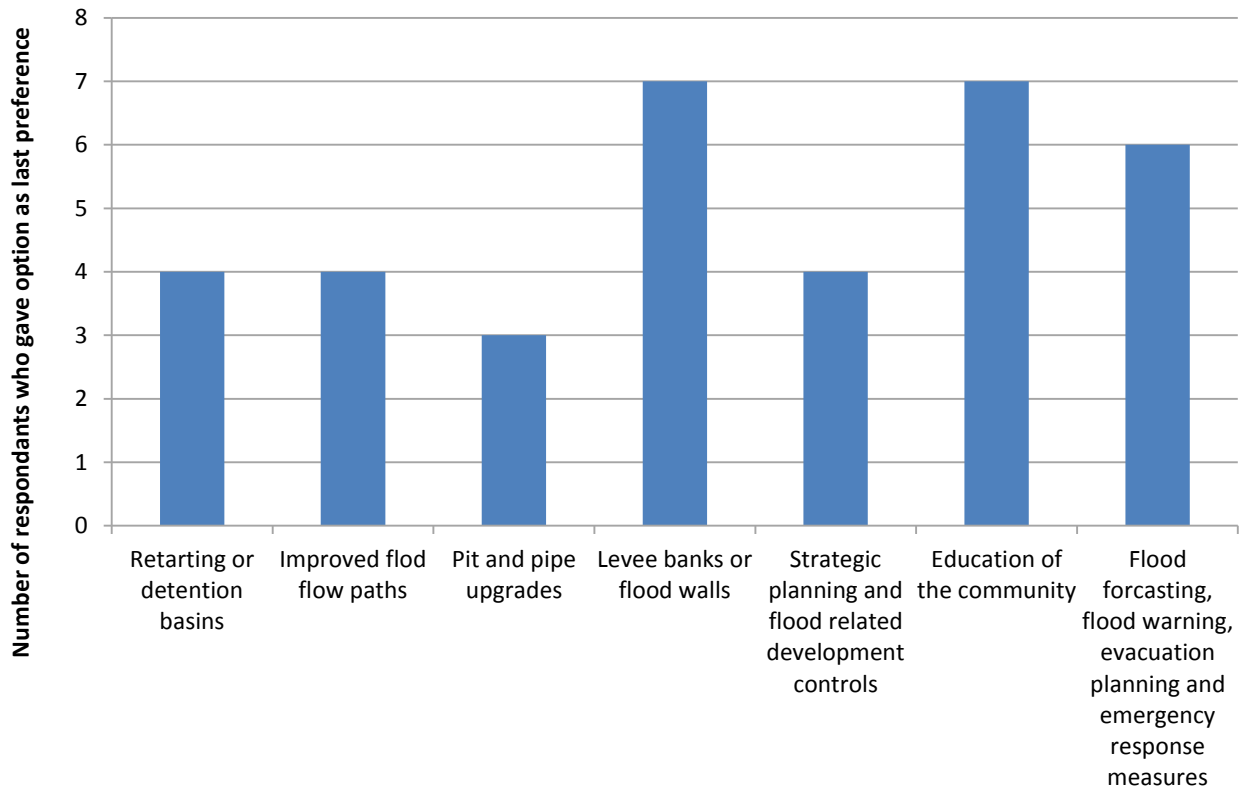
C: Property Type



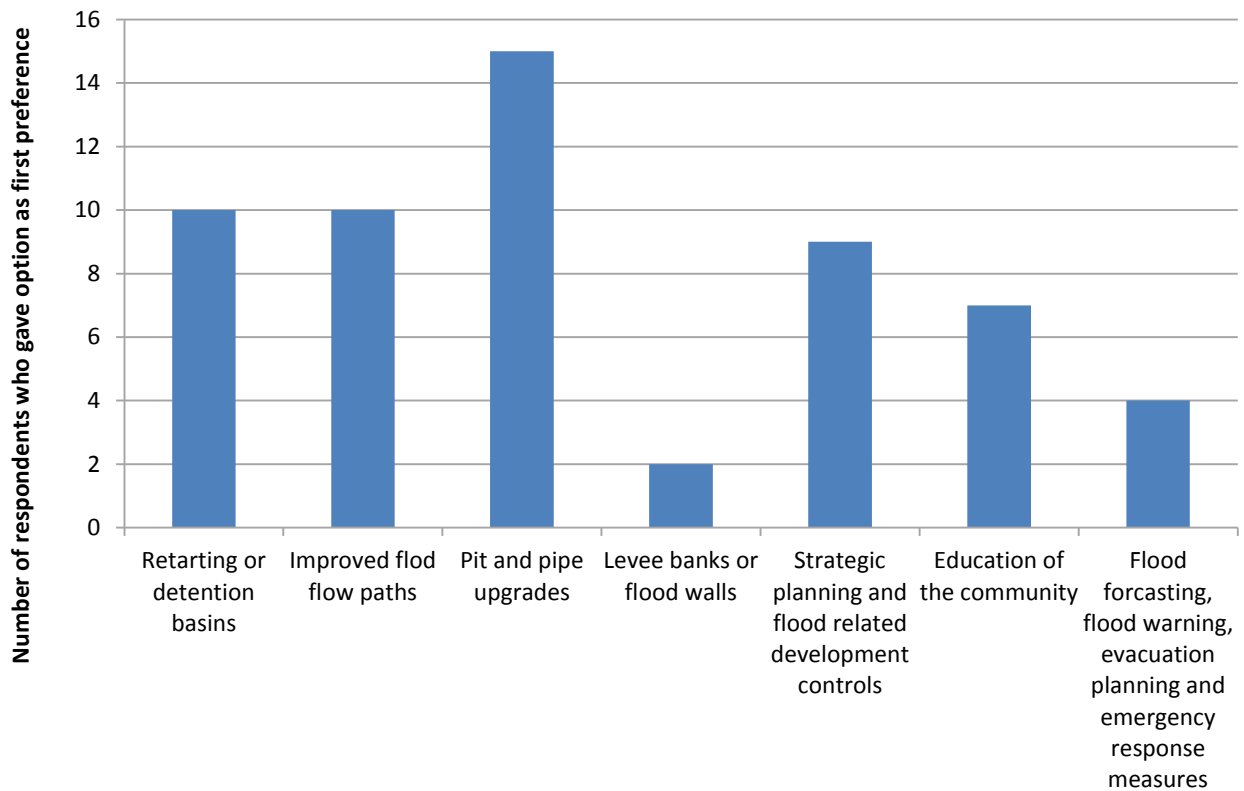
D: Period of Living/Working/Owning Property



E: Least Preferred Option



F: Most Preferred Option



G: Location of Flooding Experienced

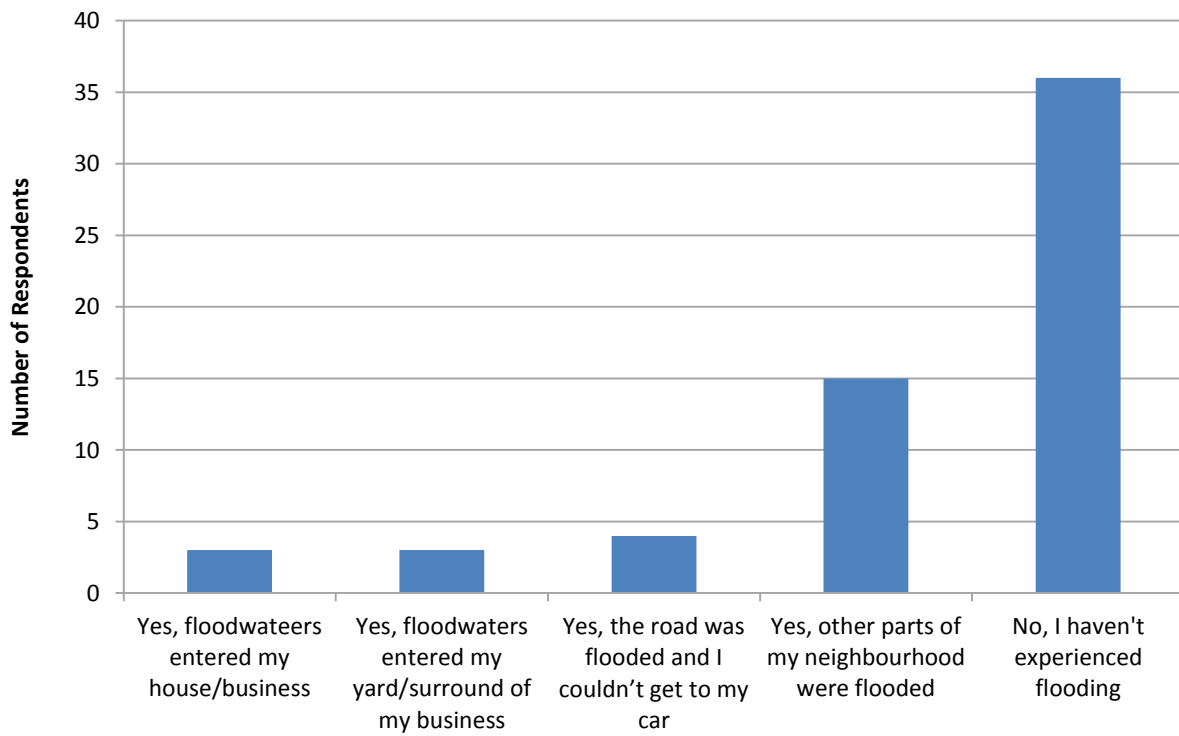


FIGURE 19
CENTENNIAL PARK
OVER FLOOR FLOOD LIABILITY

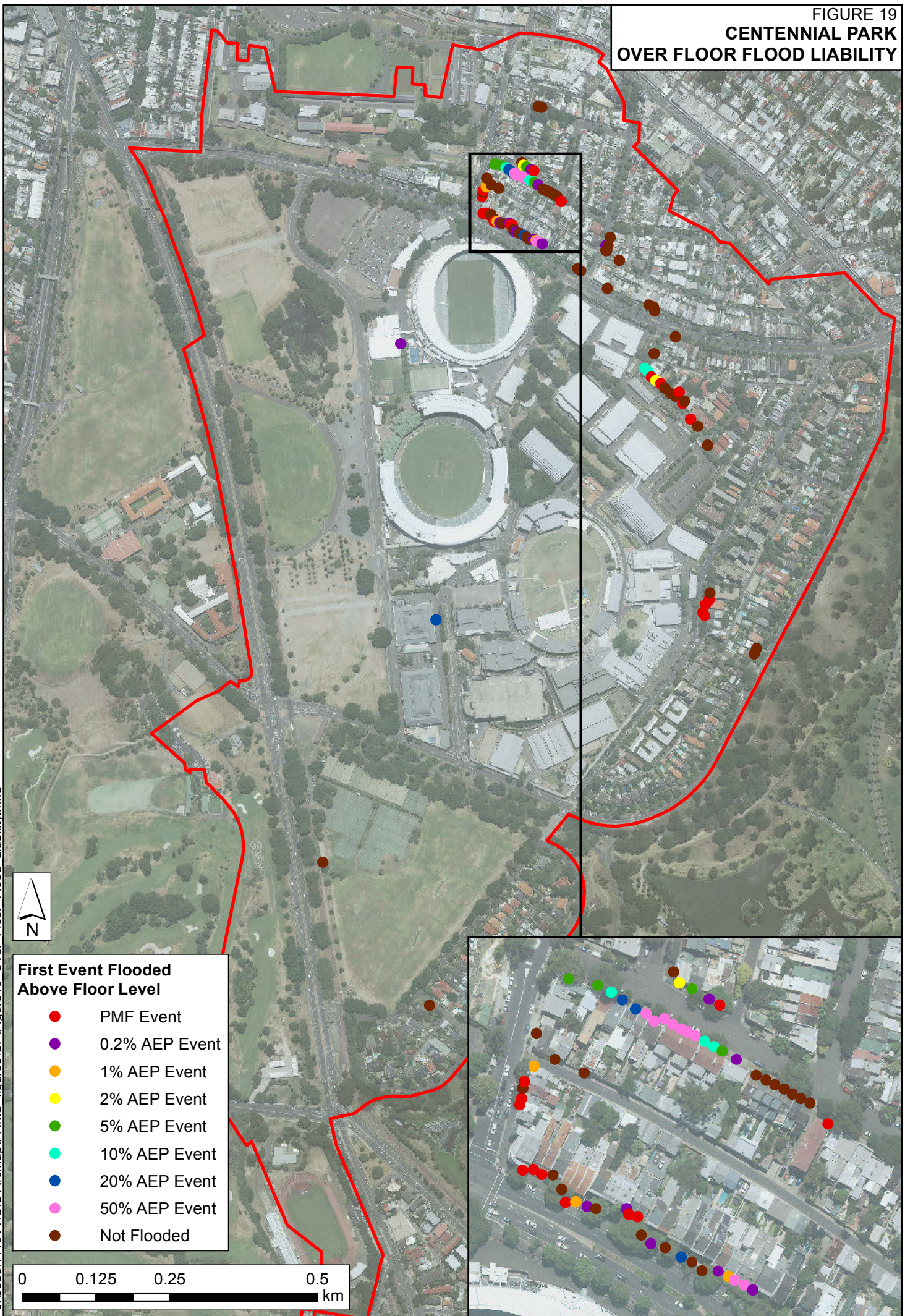


FIGURE 20
CENTENNIAL PARK
ACCESS ROAD FLOODING
1% AEP EVENT

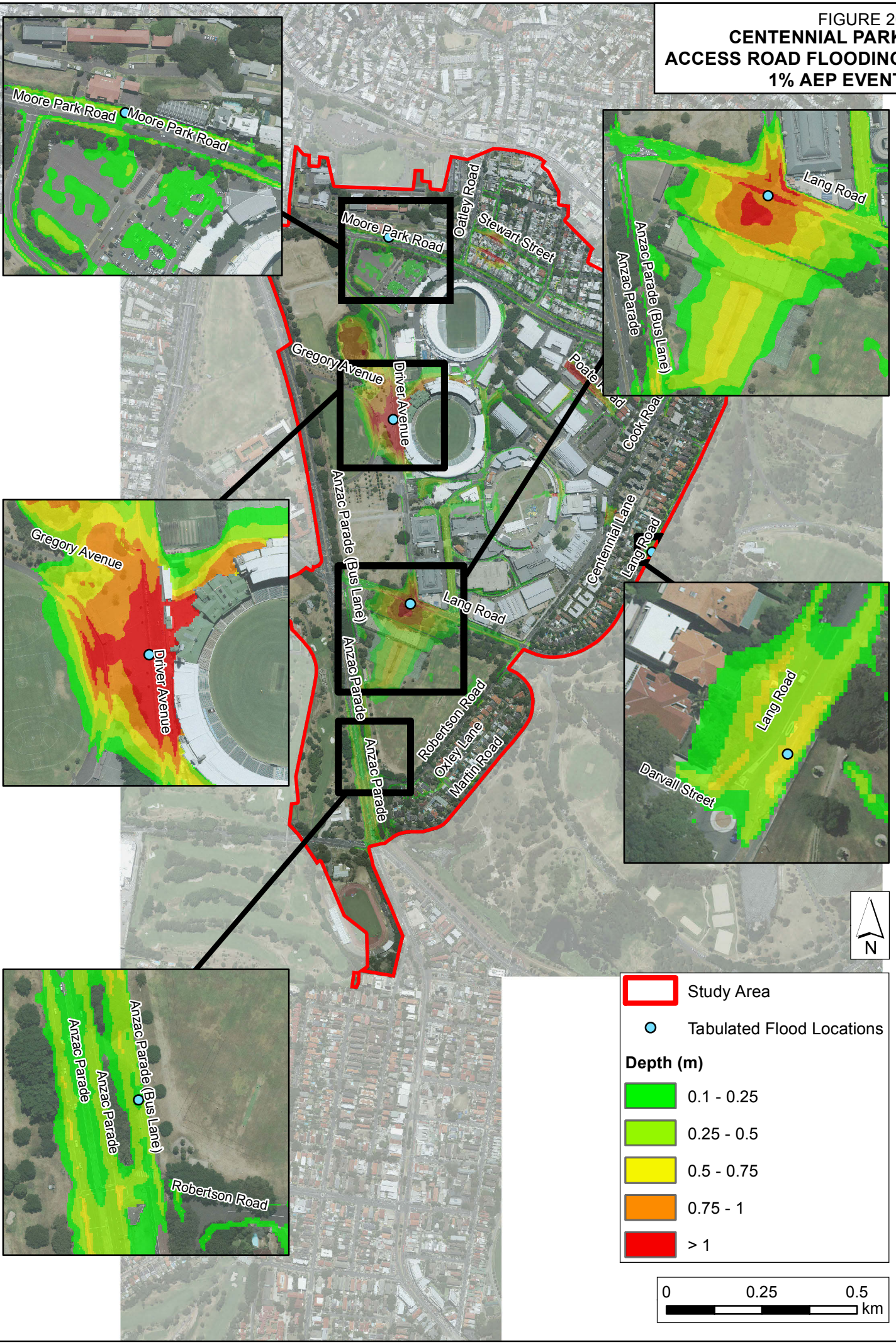


FIGURE 21
CENTENNIAL PARK
FLOOD RISK MITIGATION
MANAGEMENT OPTIONS

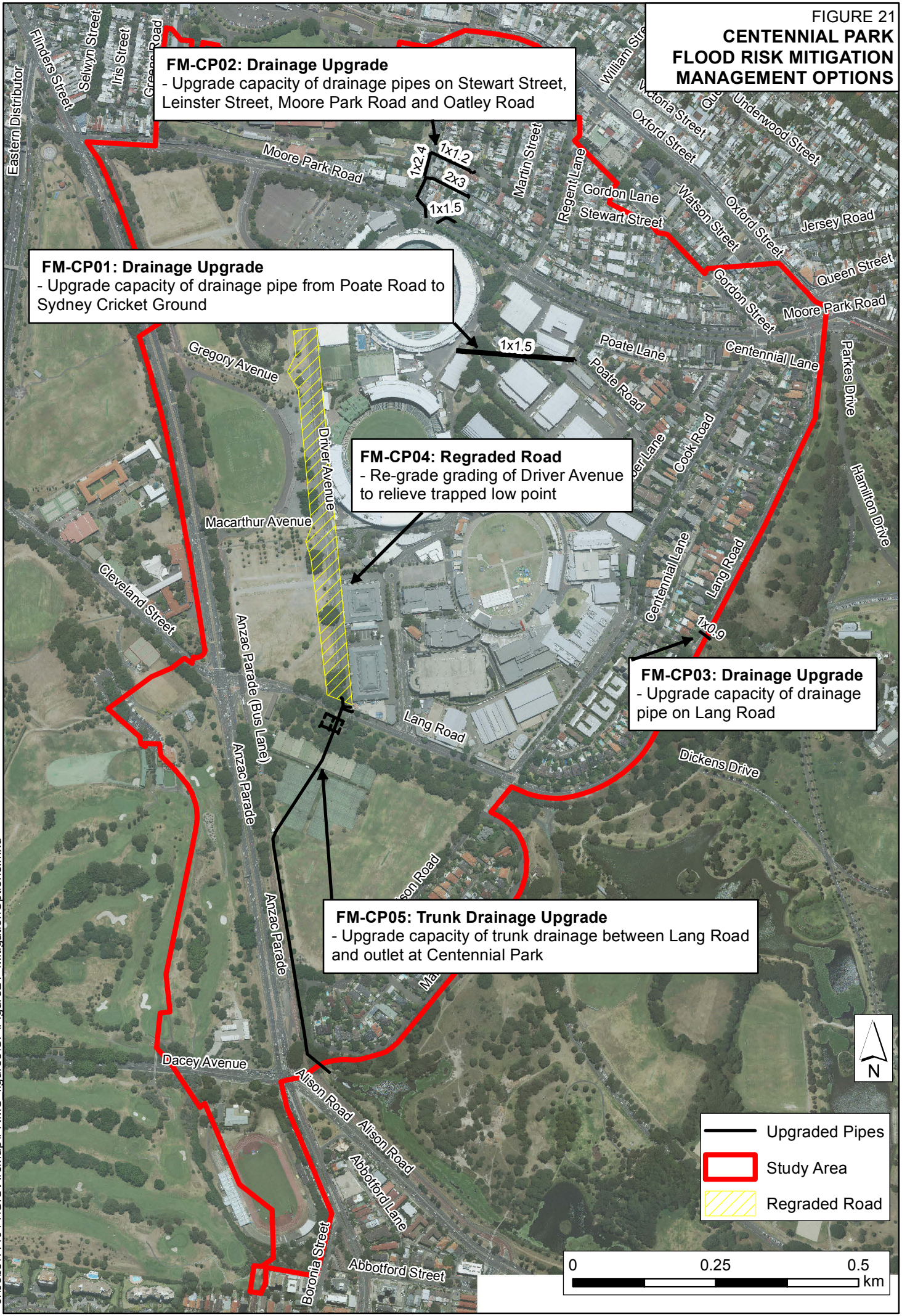
FM-CP02: Drainage Upgrade
- Upgrade capacity of drainage pipes on Stewart Street, Leinster Street, Moore Park Road and Oatley Road




FM-CP01: Drainage Upgrade
- Upgrade capacity of drainage pipe from Poate Road to Sydney Cricket Ground

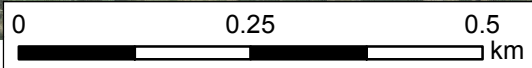
FM-CP04: Regraded Road
- Re-grade grading of Driver Avenue to relieve trapped low point

FM-CP03: Drainage Upgrade
- Upgrade capacity of drainage pipe on Lang Road

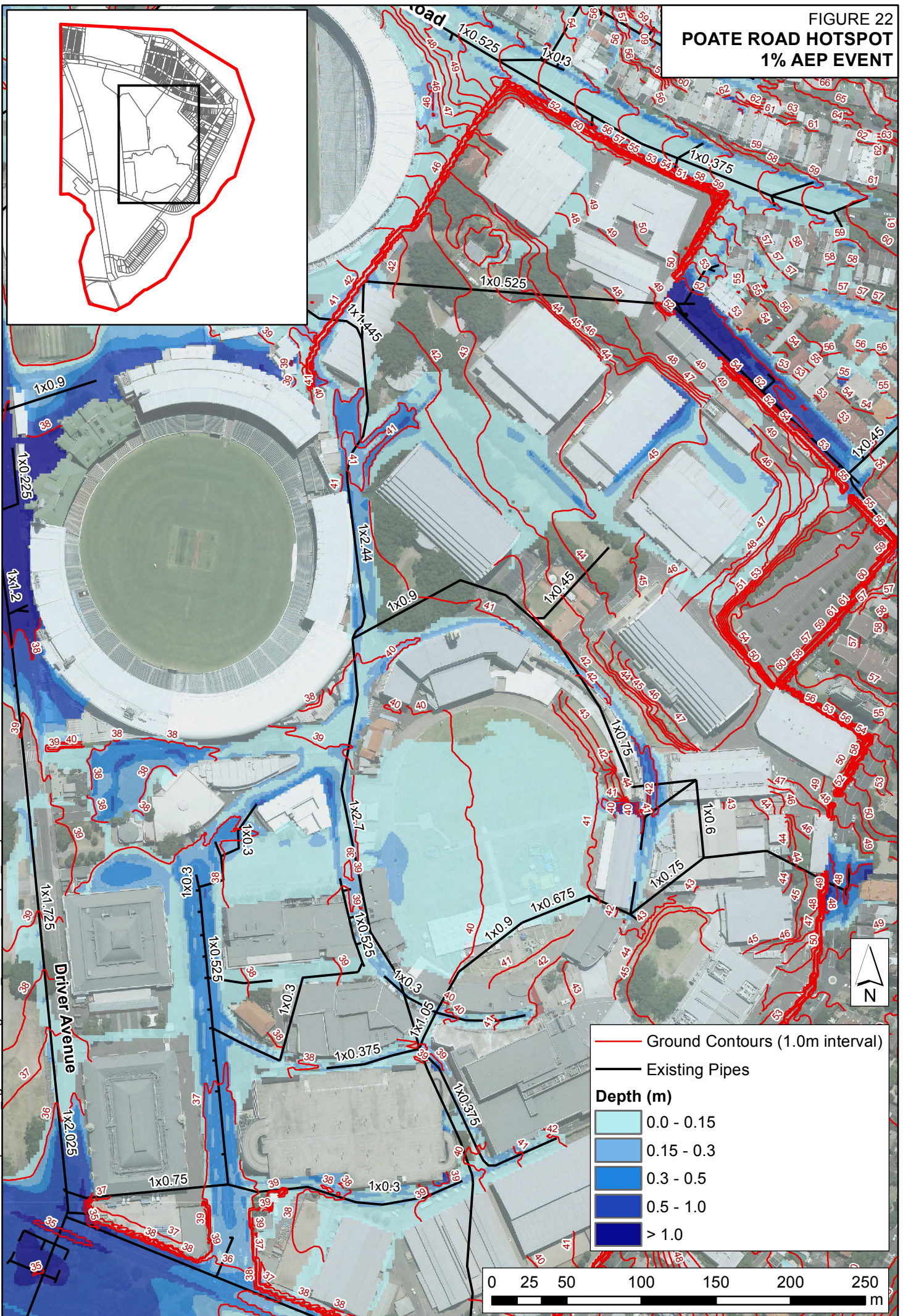
FM-CP05: Trunk Drainage Upgrade
- Upgrade capacity of trunk drainage between Lang Road and outlet at Centennial Park



-  Upgraded Pipes
-  Study Area
-  Regraded Road



**FIGURE 22
POATE ROAD HOTSPOT
1% AEP EVENT**

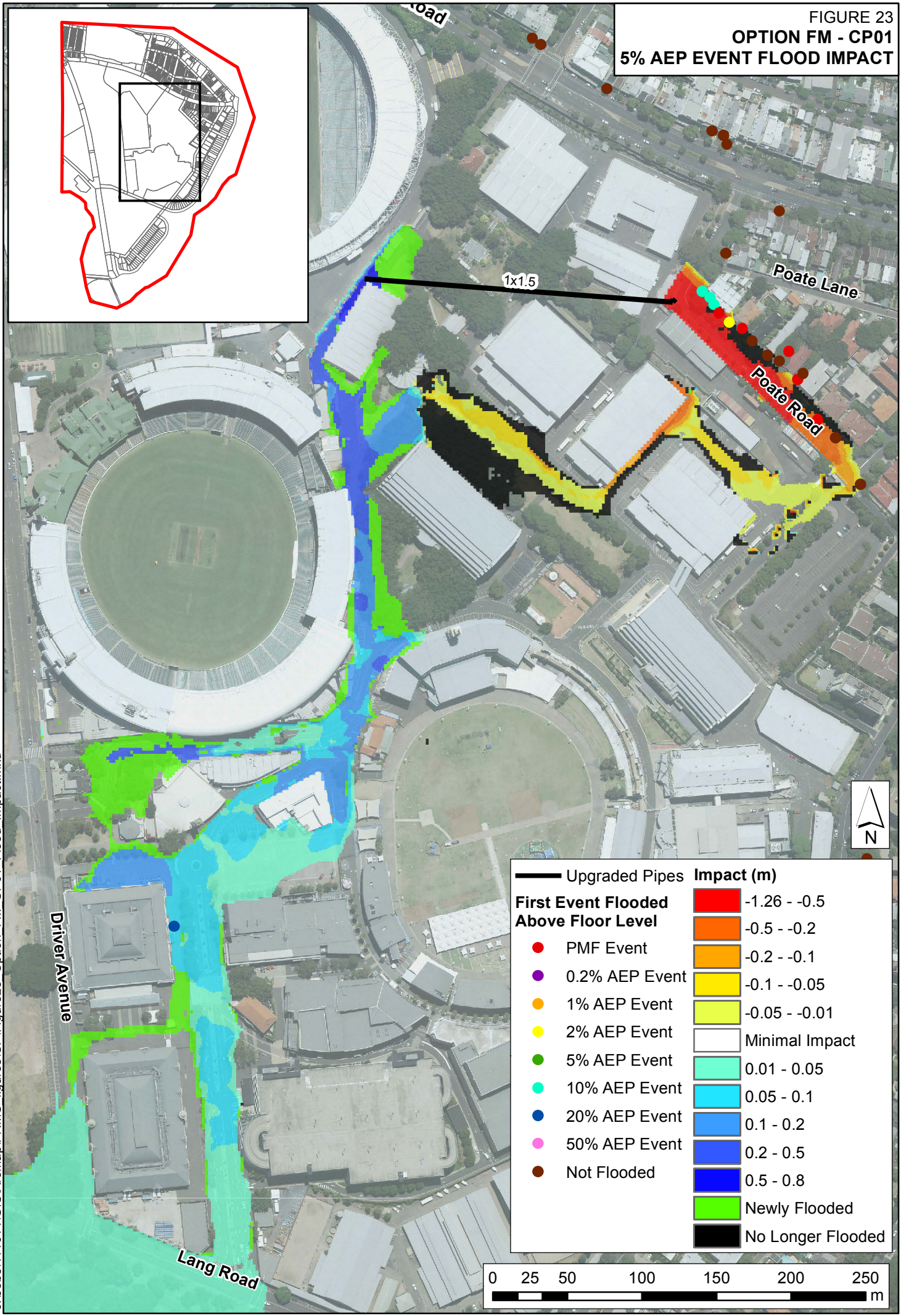


- Ground Contours (1.0m interval)
- Existing Pipes

Depth (m)

	0.0 - 0.15
	0.15 - 0.3
	0.3 - 0.5
	0.5 - 1.0
	> 1.0

FIGURE 23
OPTION FM - CP01
5% AEP EVENT FLOOD IMPACT



Impact (m)	
Red	-1.26 - -0.5
Orange	-0.5 - -0.2
Light Orange	-0.2 - -0.1
Yellow	-0.1 - -0.05
Light Yellow	-0.05 - -0.01
White	Minimal Impact
Light Green	0.01 - 0.05
Cyan	0.05 - 0.1
Blue-Cyan	0.1 - 0.2
Blue	0.2 - 0.5
Dark Blue	0.5 - 0.8
Light Green	Newly Flooded
Black	No Longer Flooded

Event Type	Symbol
PMF Event	Red dot
0.2% AEP Event	Purple dot
1% AEP Event	Orange dot
2% AEP Event	Yellow dot
5% AEP Event	Green dot
10% AEP Event	Cyan dot
20% AEP Event	Blue dot
50% AEP Event	Pink dot
Not Flooded	Brown dot

Feature	Symbol
Upgraded Pipes	Thick black line



J:\Jobs\114014\GIS\ArcMap\FRMS_figures\CP\Figure23 Option FM_CP01 Flood_Impact.mxd

Driver Avenue

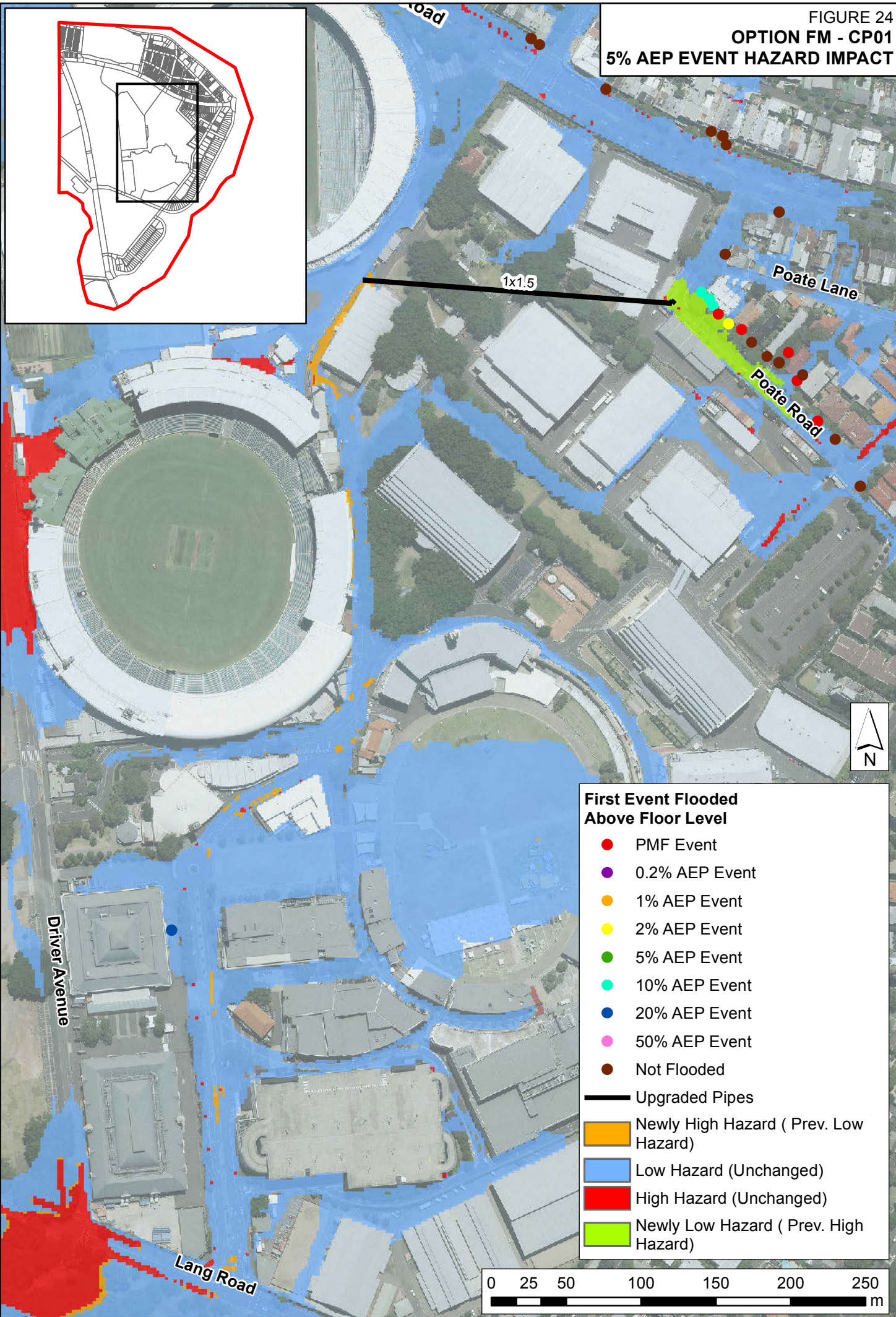
Lang Road

1x1.5

Poate Lane

Poate Road

FIGURE 24
OPTION FM - CP01
5% AEP EVENT HAZARD IMPACT



J:\Jobs\114014\GIS\ArcMap\FRMS_figures\CP\Figure24 Option_FM_CP01_Hazard_Impact1.mxd

First Event Flooded Above Floor Level

- PMF Event
- 0.2% AEP Event
- 1% AEP Event
- 2% AEP Event
- 5% AEP Event
- 10% AEP Event
- 20% AEP Event
- 50% AEP Event
- Not Flooded

— Upgraded Pipes

- Newly High Hazard (Prev. Low Hazard)
- Low Hazard (Unchanged)
- High Hazard (Unchanged)
- Newly Low Hazard (Prev. High Hazard)



FIGURE 25
LEINSTER STREET HOTSPOT
1% AEP EVENT

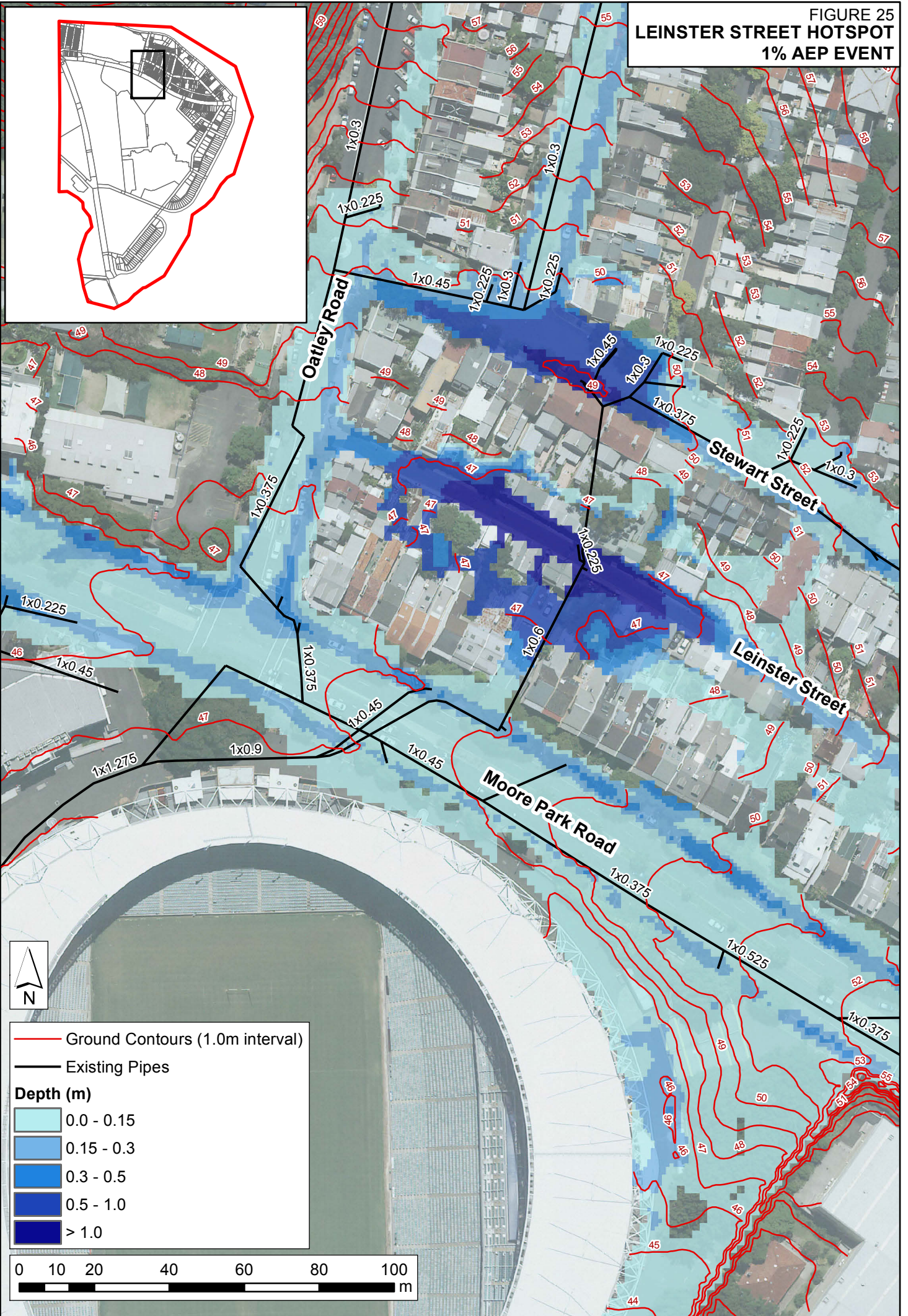
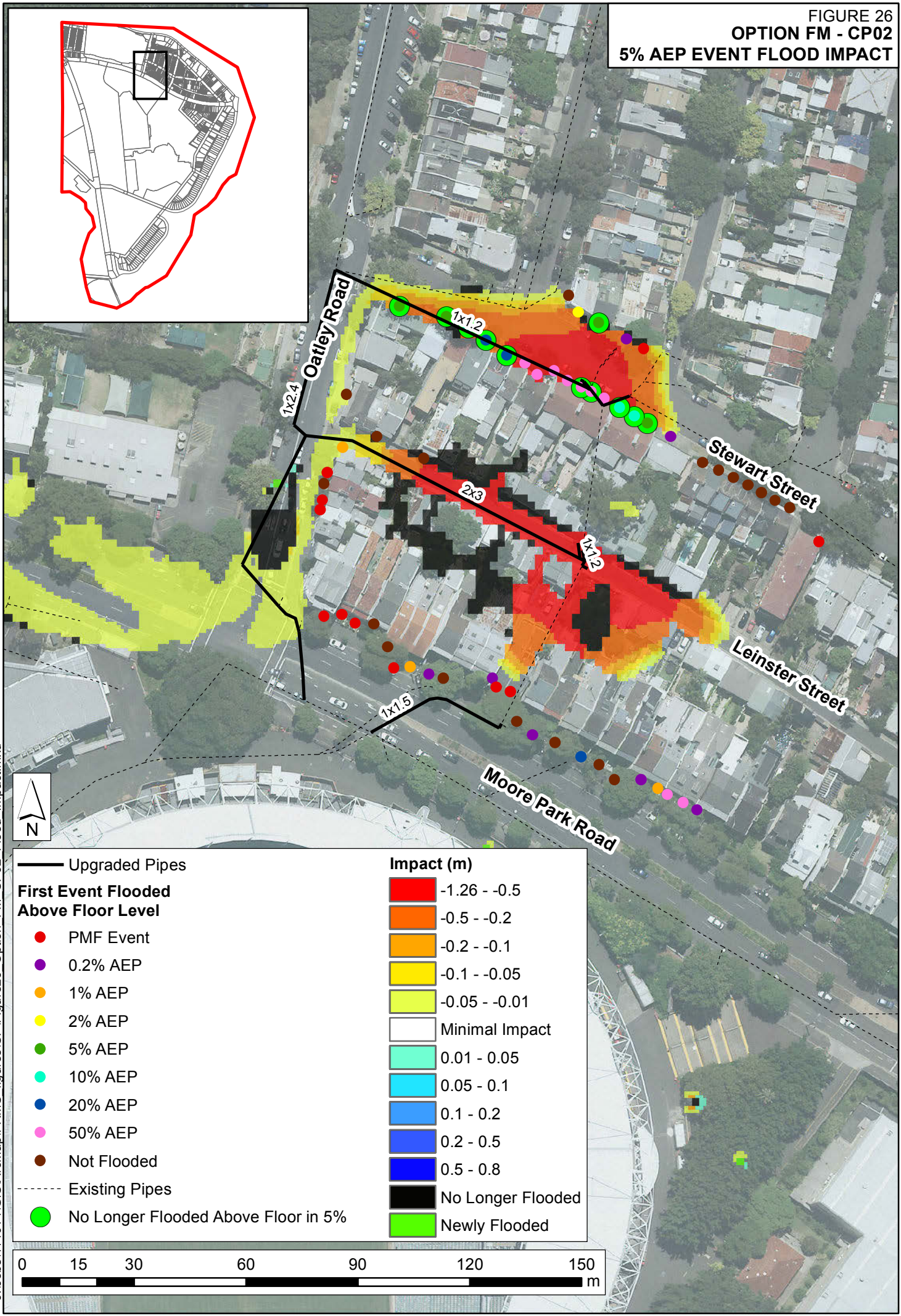


FIGURE 26
 OPTION FM - CP02
 5% AEP EVENT FLOOD IMPACT

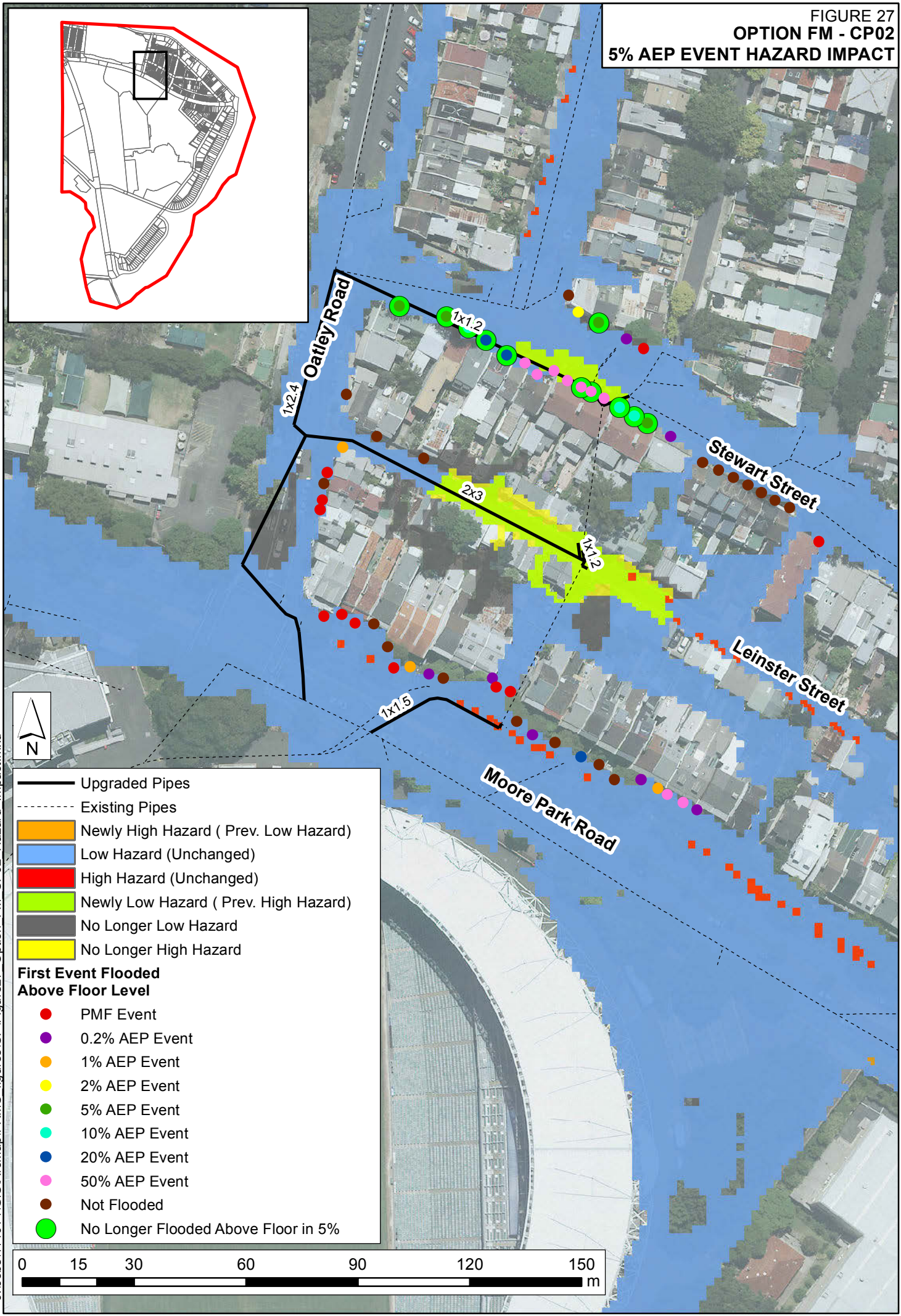


J:\Jobs\114014\GIS\ArcMap\FRMS_figures\CP\Figure26 Option FM_CP02 Flood_Impact.mxd

	Upgraded Pipes		Impact (m)
	Existing Pipes		-1.26 -- -0.5
	PMF Event		-0.5 -- -0.2
	0.2% AEP		-0.2 -- -0.1
	1% AEP		-0.1 -- -0.05
	2% AEP		-0.05 -- -0.01
	5% AEP		Minimal Impact
	10% AEP		0.01 - 0.05
	20% AEP		0.05 - 0.1
	50% AEP		0.1 - 0.2
	Not Flooded		0.2 - 0.5
	Existing Pipes		0.5 - 0.8
	No Longer Flooded Above Floor in 5%		No Longer Flooded
			Newly Flooded



FIGURE 27
OPTION FM - CP02
5% AEP EVENT HAZARD IMPACT



J:\Jobs\114014\GIS\ArcMap\FRMS_figures\CP\Figure27_Option_FM_CP02_Hazard_Impact.mxd

- Upgraded Pipes
 - Existing Pipes
 - Newly High Hazard (Prev. Low Hazard)
 - Low Hazard (Unchanged)
 - High Hazard (Unchanged)
 - Newly Low Hazard (Prev. High Hazard)
 - No Longer Low Hazard
 - No Longer High Hazard
- First Event Flooded Above Floor Level**
- PMF Event
 - 0.2% AEP Event
 - 1% AEP Event
 - 2% AEP Event
 - 5% AEP Event
 - 10% AEP Event
 - 20% AEP Event
 - 50% AEP Event
 - Not Flooded
 - No Longer Flooded Above Floor in 5%



FIGURE 28
 LANG ROAD NORTH HOTSPOT
 1% AEP EVENT

