

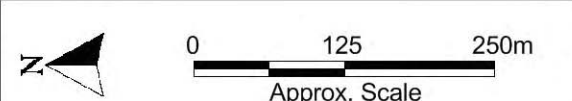
DISCLAIMER:
 BUILDINGS HAVE NOT BEEN MODELLED AND RESULTS CAN'T BE USED TO DETERMINE INTERNAL BUILDING FLOODING.
 INUNDATION PATTERNS FROM LOCAL OVERLAND FLOW MAY VARY SLIGHTLY TO THE MAPPED RESULTS SHOWN.
 COUNCIL SHOULD BE CONSULTED TO CONFIRM FLOOD AFFECTATION AT INDIVIDUAL ALLOTMENTS.

Title:
Peak Flood Velocity
2% AEP (50 yr ARI)

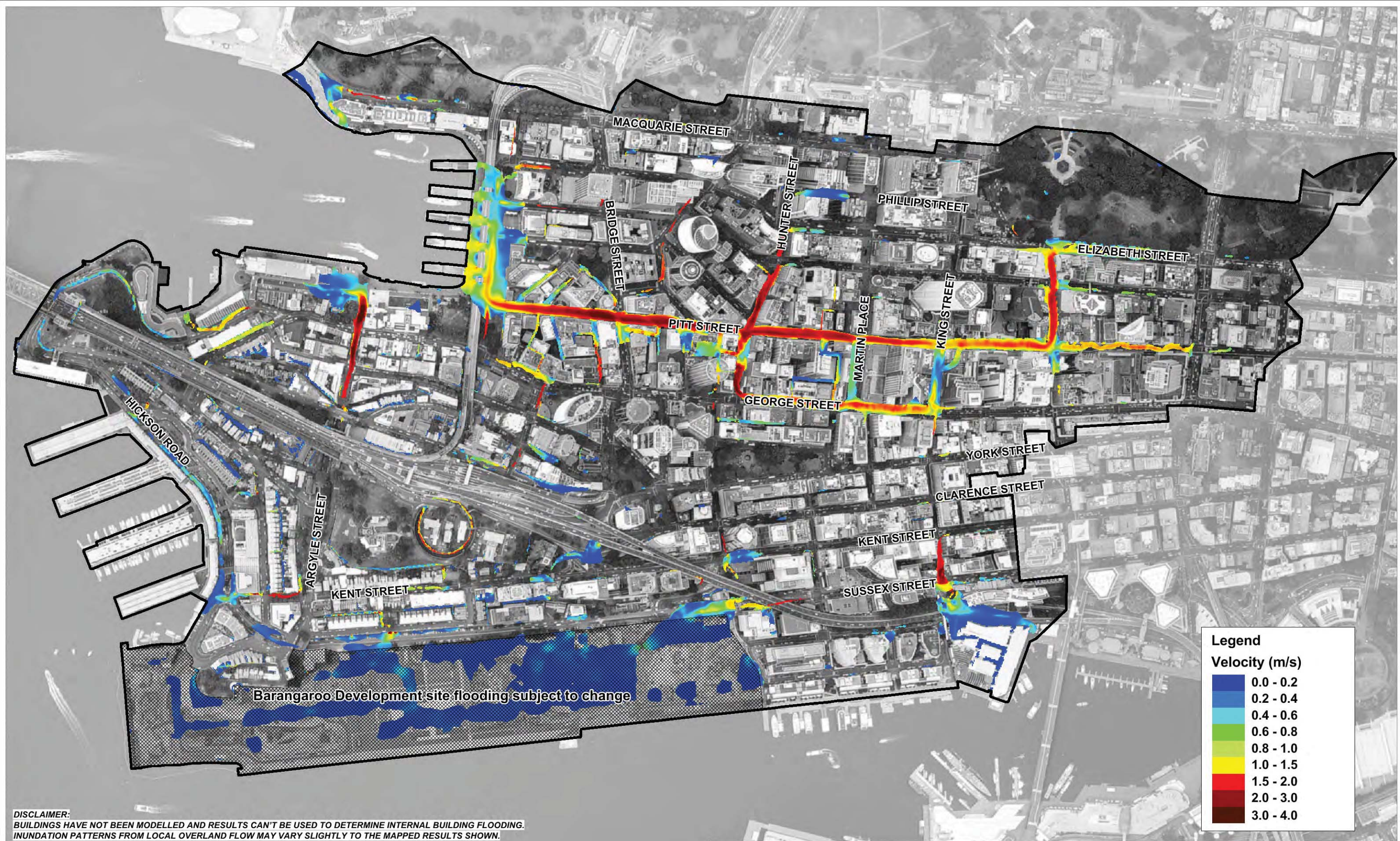
Figure:
A-21

Rev:
 -

BMT WBM endeavours to ensure that the information provided in this map is correct at the time of publication. BMT WBM does not warrant, guarantee or make representations regarding the currency and accuracy of information contained in this map.

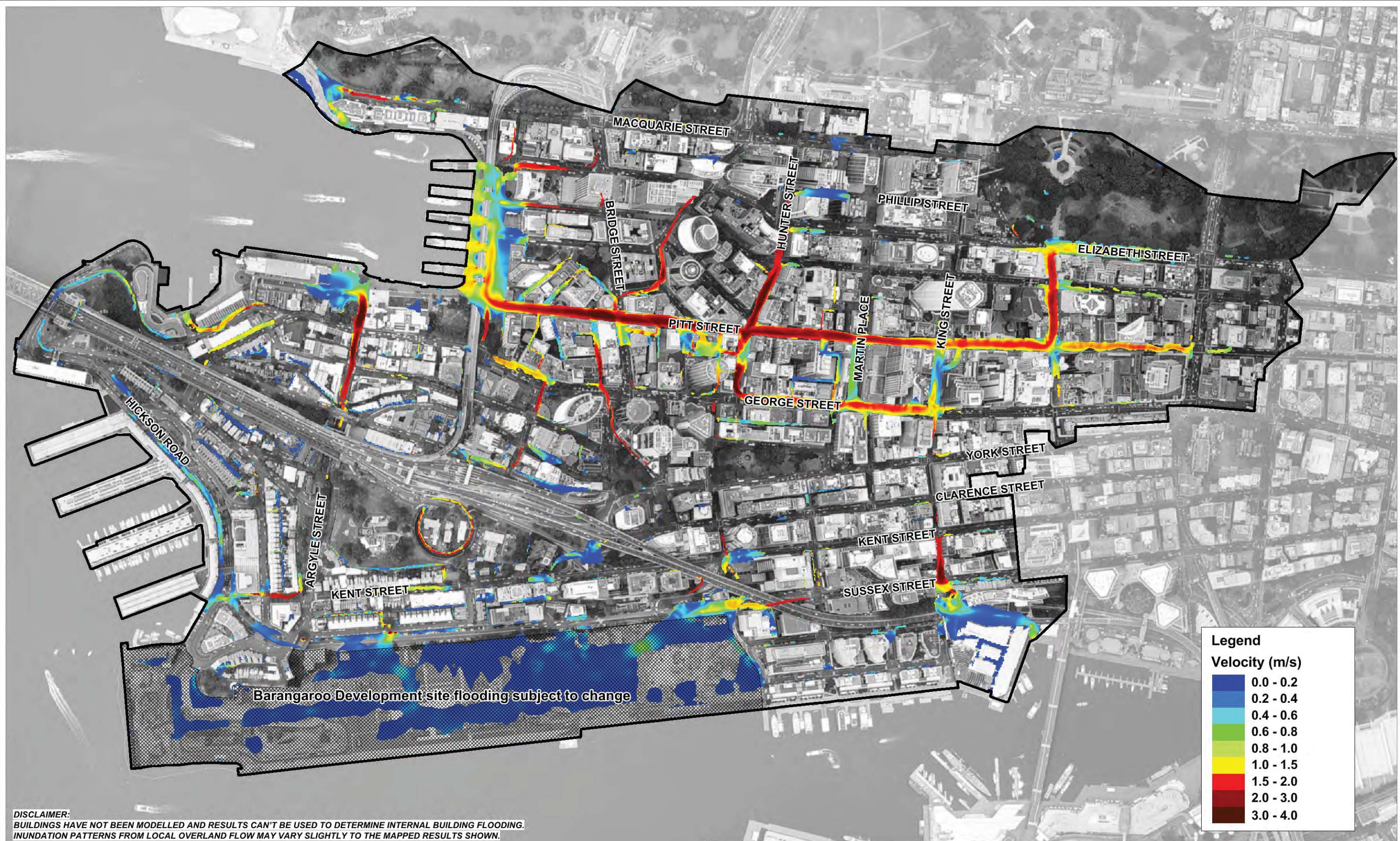


Filepath : S20022DraftingWORAppendixA_FiguresFigureA21_050YR_Velocity.wor



DISCLAIMER:
 BUILDINGS HAVE NOT BEEN MODELLED AND RESULTS CAN'T BE USED TO DETERMINE INTERNAL BUILDING FLOODING.
 INUNDATION PATTERNS FROM LOCAL OVERLAND FLOW MAY VARY SLIGHTLY TO THE MAPPED RESULTS SHOWN.
 COUNCIL SHOULD BE CONSULTED TO CONFIRM FLOOD AFFECTATION AT INDIVIDUAL ALLOTMENTS.

Title: Peak Flood Velocity 1% AEP (100 yr ARI)		Figure: A-22	Rev: -
BMT WBM endeavours to ensure that the information provided in this map is correct at the time of publication. BMT WBM does not warrant, guarantee or make representations regarding the currency and accuracy of information contained in this map.			
Filepath : S20022DraftingWORAppendixA_FiguresFigureA22_100YR_Velocity.wor			



DISCLAIMER:
 BUILDINGS HAVE NOT BEEN MODELLED AND RESULTS CAN'T BE USED TO DETERMINE INTERNAL BUILDING FLOODING.
 INUNDATION PATTERNS FROM LOCAL OVERLAND FLOW MAY VARY SLIGHTLY TO THE MAPPED RESULTS SHOWN.
 COUNCIL SHOULD BE CONSULTED TO CONFIRM FLOOD AFFECTATION AT INDIVIDUAL ALLOTMENTS.

Title:
Peak Flood Velocity
0.2% AEP (500 yr ARI)

BMT WBM endeavours to ensure that the information provided in this map is correct at the time of publication. BMT WBM does not warrant, guarantee or make representations regarding the currency and accuracy of information contained in this map.

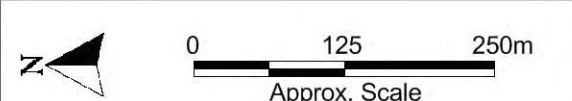
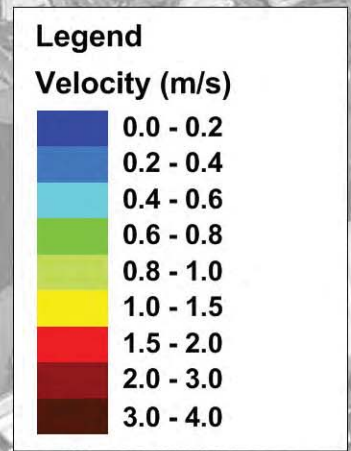
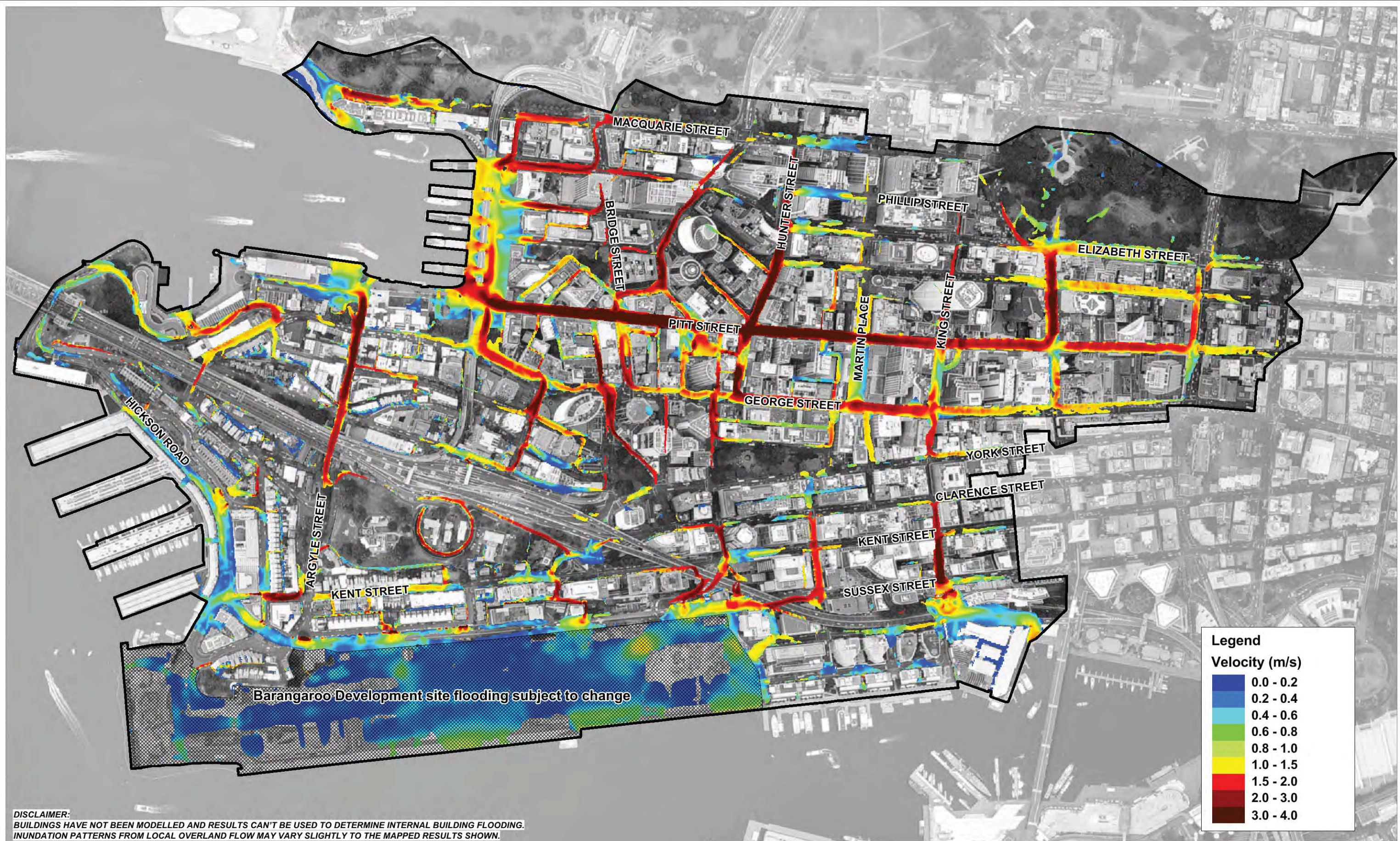


Figure:
A-23

Rev:
 -



Filepath : S20022DraftingWORAppendixA_FiguresFigureA23_500YR_Velocity.wor



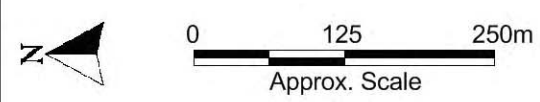
DISCLAIMER:
BUILDINGS HAVE NOT BEEN MODELLED AND RESULTS CAN'T BE USED TO DETERMINE INTERNAL BUILDING FLOODING.
INUNDATION PATTERNS FROM LOCAL OVERLAND FLOW MAY VARY SLIGHTLY TO THE MAPPED RESULTS SHOWN.
COUNCIL SHOULD BE CONSULTED TO CONFIRM FLOOD AFFECTATION AT INDIVIDUAL ALLOTMENTS.

Title:
**Peak Flood Velocity
Probable Maximum Flood (PMF)**

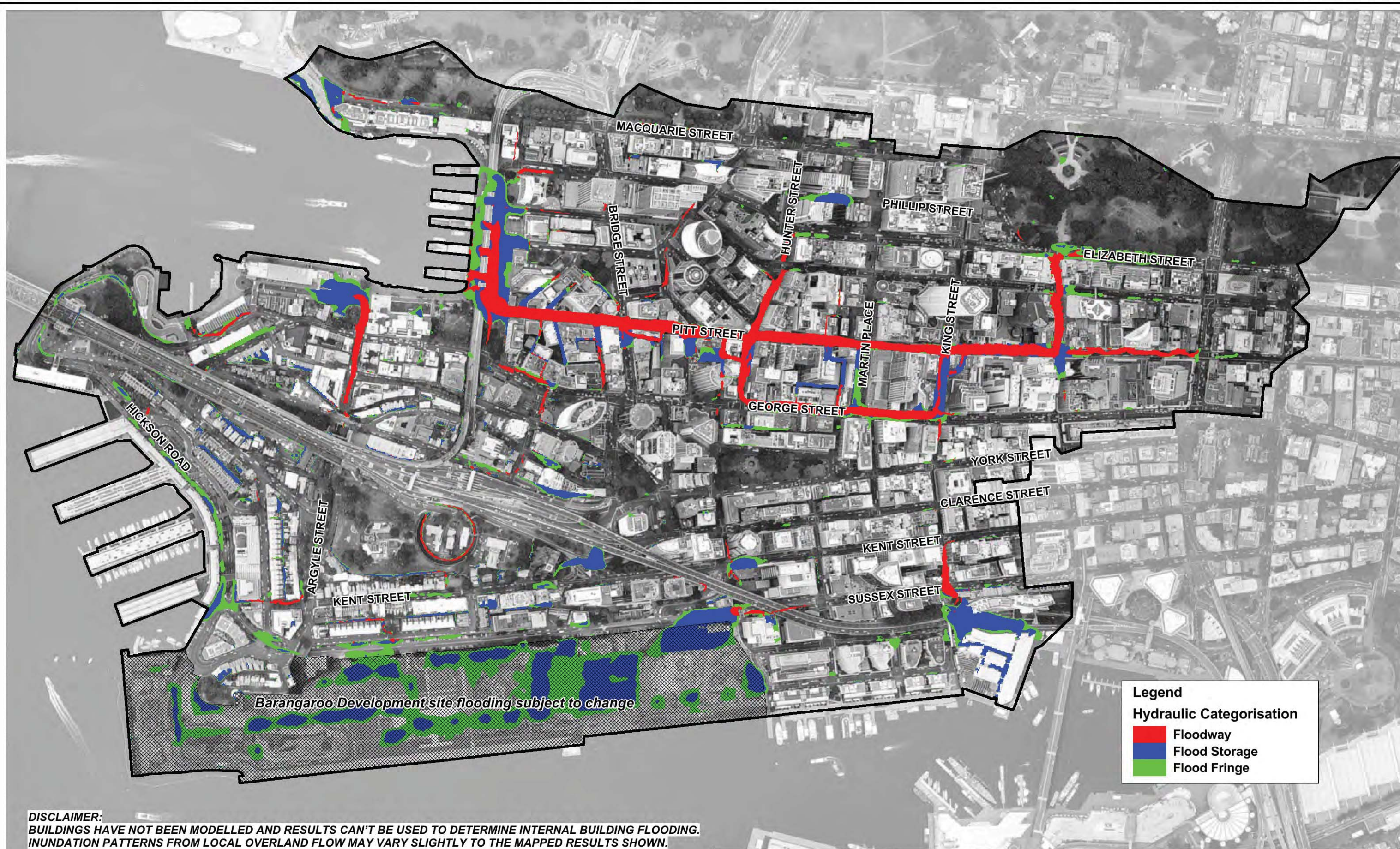
Figure:
A-24

Rev:
-

BMT WBM endeavours to ensure that the information provided in this map is correct at the time of publication. BMT WBM does not warrant, guarantee or make representations regarding the currency and accuracy of information contained in this map.



Filepath : S20022DraftingWORAppendixA_FiguresFigureA24_PMF_Velocity.wor



Legend

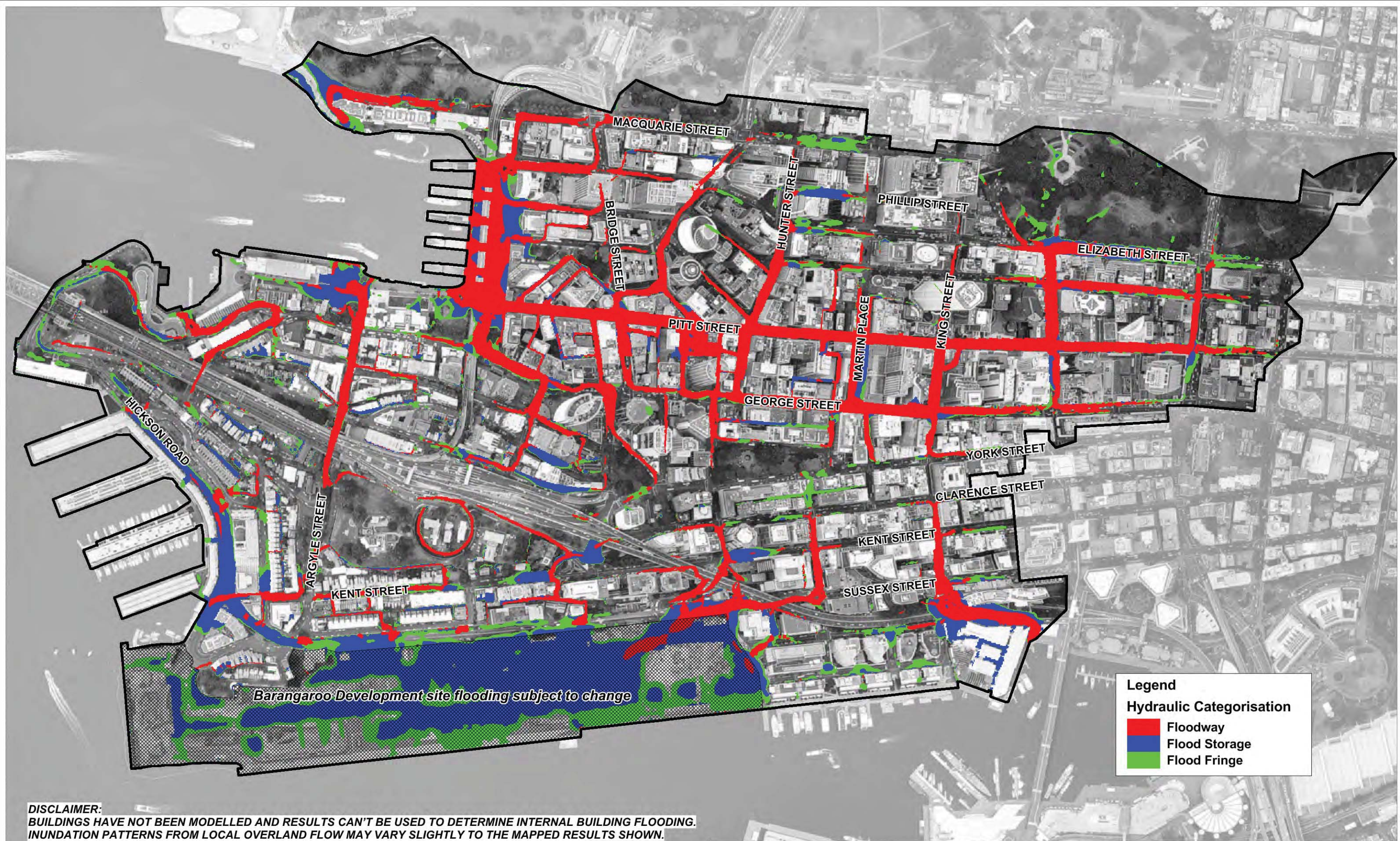
Hydraulic Categorisation

- Floodway
- Flood Storage
- Flood Fringe

DISCLAIMER:
 BUILDINGS HAVE NOT BEEN MODELLED AND RESULTS CAN'T BE USED TO DETERMINE INTERNAL BUILDING FLOODING.
 INUNDATION PATTERNS FROM LOCAL OVERLAND FLOW MAY VARY SLIGHTLY TO THE MAPPED RESULTS SHOWN.
 COUNCIL SHOULD BE CONSULTED TO CONFIRM FLOOD AFFECTATION AT INDIVIDUAL ALLOTMENTS.

HYDRAULIC CATEGORISATION IS APPROXIMATE ONLY. SITE SPECIFIC ASSESSMENT IS REQUIRED TO CONFIRM THE LOCATION OF FLOOD WAYS.

<p>Title: Preliminary Hydraulic Categorisation 1% AEP (100 yr ARI)</p> <p><small>BMT WBM endeavours to ensure that the information provided in this map is correct at the time of publication. BMT WBM does not warrant, guarantee or make representations regarding the currency and accuracy of information contained in this map.</small></p>	 Approx. Scale	<p>Figure: A-25</p> <p>Rev: -</p>
<p>Filepath : S20022DraftingWORAppendixA_FiguresFigureA25_100YR_HydraulicCat.wor</p>		 BMT WBM <small>www.bmtwbm.com.au</small>



Legend

Hydraulic Categorisation

- Floodway
- Flood Storage
- Flood Fringe

DISCLAIMER:
 BUILDINGS HAVE NOT BEEN MODELLED AND RESULTS CAN'T BE USED TO DETERMINE INTERNAL BUILDING FLOODING.
 INUNDATION PATTERNS FROM LOCAL OVERLAND FLOW MAY VARY SLIGHTLY TO THE MAPPED RESULTS SHOWN.
 COUNCIL SHOULD BE CONSULTED TO CONFIRM FLOOD AFFECTATION AT INDIVIDUAL ALLOTMENTS.

HYDRAULIC CATEGORISATION IS APPROXIMATE ONLY. SITE SPECIFIC ASSESSMENT IS REQUIRED TO CONFIRM THE LOCATION OF FLOOD WAYS.

Title:
**Preliminary Hydraulic Categorisation
 Probable Maximum Flood (PMF)**

BMT WBM endeavours to ensure that the information provided in this map is correct at the time of publication. BMT WBM does not warrant, guarantee or make representations regarding the currency and accuracy of information contained in this map.

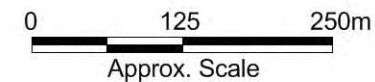
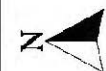


Figure:
A-26

Rev:
 -





Legend
Provisional Hydraulic Flood Hazard

- Low
- Medium
- High

DISCLAIMER:
 BUILDINGS HAVE NOT BEEN MODELLED AND RESULTS CAN'T BE USED TO DETERMINE INTERNAL BUILDING FLOODING.
 INUNDATION PATTERNS FROM LOCAL OVERLAND FLOW MAY VARY SLIGHTLY TO THE MAPPED RESULTS SHOWN.
 COUNCIL SHOULD BE CONSULTED TO CONFIRM FLOOD AFFECTATION AT INDIVIDUAL ALLOTMENTS.

PROVISIONAL HYDRAULIC HAZARD IS APPROXIMATE ONLY. SITE SPECIFIC ASSESSMENT IS REQUIRED TO CONFIRM RESULTS.

Title:
Provisional Hydraulic Hazard
10% AEP (10 yr ARI)

BMT WBM endeavours to ensure that the information provided in this map is correct at the time of publication. BMT WBM does not warrant, guarantee or make representations regarding the currency and accuracy of information contained in this map.

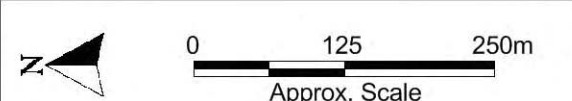


Figure:
A-27

Rev:
 -



Filepath : S20022DraftingWORAppendixA_FiguresFigureA27_010YR_Hazard.wor



Legend
Provisional Hydraulic Flood Hazard

- Low
- Medium
- High

DISCLAIMER:
 BUILDINGS HAVE NOT BEEN MODELLED AND RESULTS CAN'T BE USED TO DETERMINE INTERNAL BUILDING FLOODING.
 INUNDATION PATTERNS FROM LOCAL OVERLAND FLOW MAY VARY SLIGHTLY TO THE MAPPED RESULTS SHOWN.
 COUNCIL SHOULD BE CONSULTED TO CONFIRM FLOOD AFFECTATION AT INDIVIDUAL ALLOTMENTS.

PROVISIONAL HYDRAULIC HAZARD IS APPROXIMATE ONLY. SITE SPECIFIC ASSESSMENT IS REQUIRED TO CONFIRM RESULTS.

Title:
Provisional Hydraulic Hazard
5% AEP (20 yr ARI)

BMT WBM endeavours to ensure that the information provided in this map is correct at the time of publication. BMT WBM does not warrant, guarantee or make representations regarding the currency and accuracy of information contained in this map.

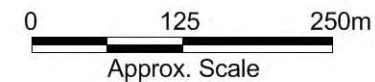
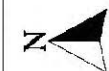
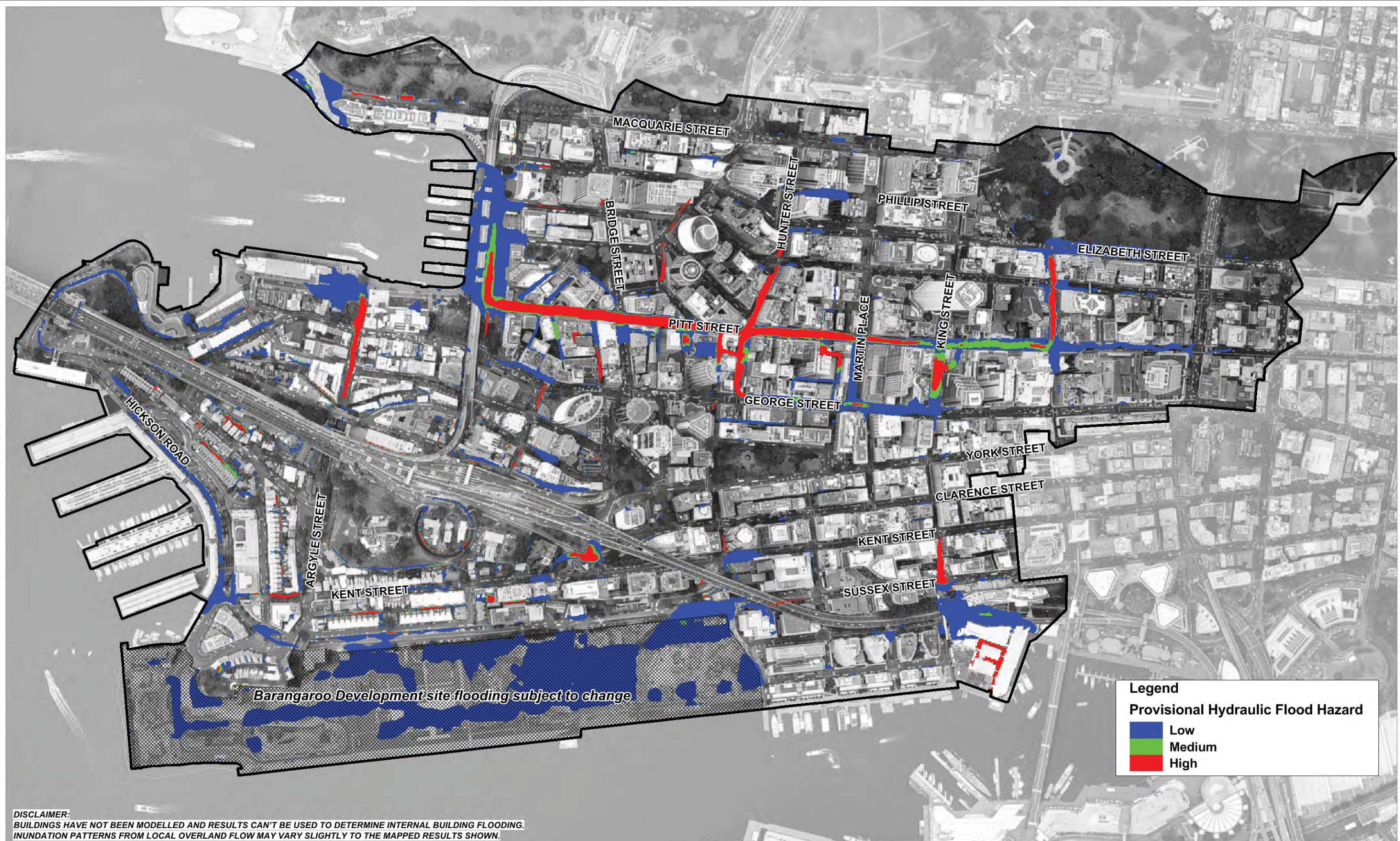


Figure:
A-28

Rev:
 -





Legend
Provisional Hydraulic Flood Hazard

- Low
- Medium
- High

DISCLAIMER:
 BUILDINGS HAVE NOT BEEN MODELLED AND RESULTS CAN'T BE USED TO DETERMINE INTERNAL BUILDING FLOODING.
 INUNDATION PATTERNS FROM LOCAL OVERLAND FLOW MAY VARY SLIGHTLY TO THE MAPPED RESULTS SHOWN.
 COUNCIL SHOULD BE CONSULTED TO CONFIRM FLOOD AFFECTATION AT INDIVIDUAL ALLOTMENTS.

PROVISIONAL HYDRAULIC HAZARD IS APPROXIMATE ONLY. SITE SPECIFIC ASSESSMENT IS REQUIRED TO CONFIRM RESULTS.

<p>Title: Provisional Hydraulic Hazard 1% AEP (100 yr ARI)</p> <p><small>BMT WBM endeavours to ensure that the information provided in this map is correct at the time of publication. BMT WBM does not warrant, guarantee or make representations regarding the currency and accuracy of information contained in this map.</small></p>	 Approx. Scale	Figure: A-29	Rev: -
<p>Filepath : S20022DraftingWORAppendixA_FiguresFigureA29_100YR_Hazard.wor</p>		BMT WBM <small>www.bmtwbm.com.au</small>	



Legend
Provisional Hydraulic Flood Hazard

- Low
- Medium
- High

DISCLAIMER:
 BUILDINGS HAVE NOT BEEN MODELLED AND RESULTS CAN'T BE USED TO DETERMINE INTERNAL BUILDING FLOODING.
 INUNDATION PATTERNS FROM LOCAL OVERLAND FLOW MAY VARY SLIGHTLY TO THE MAPPED RESULTS SHOWN.
 COUNCIL SHOULD BE CONSULTED TO CONFIRM FLOOD AFFECTATION AT INDIVIDUAL ALLOTMENTS.

PROVISIONAL HYDRAULIC HAZARD IS APPROXIMATE ONLY. SITE SPECIFIC ASSESSMENT IS REQUIRED TO CONFIRM RESULTS.

Title:
Provisional Hydraulic Hazard
Probable Maximum Flood (PMF)

BMT WBM endeavours to ensure that the information provided in this map is correct at the time of publication. BMT WBM does not warrant, guarantee or make representations regarding the currency and accuracy of information contained in this map.

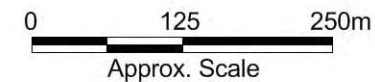
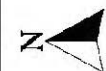


Figure:
A-30

Rev:
 -

