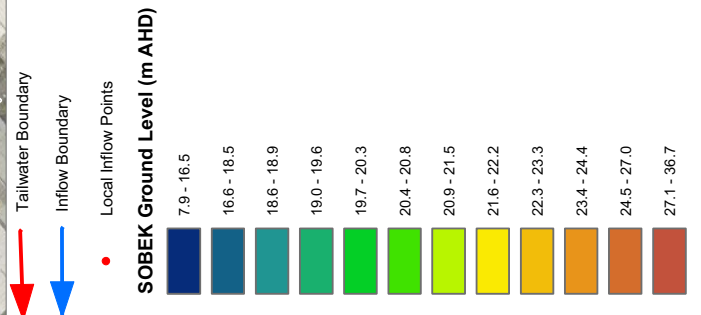
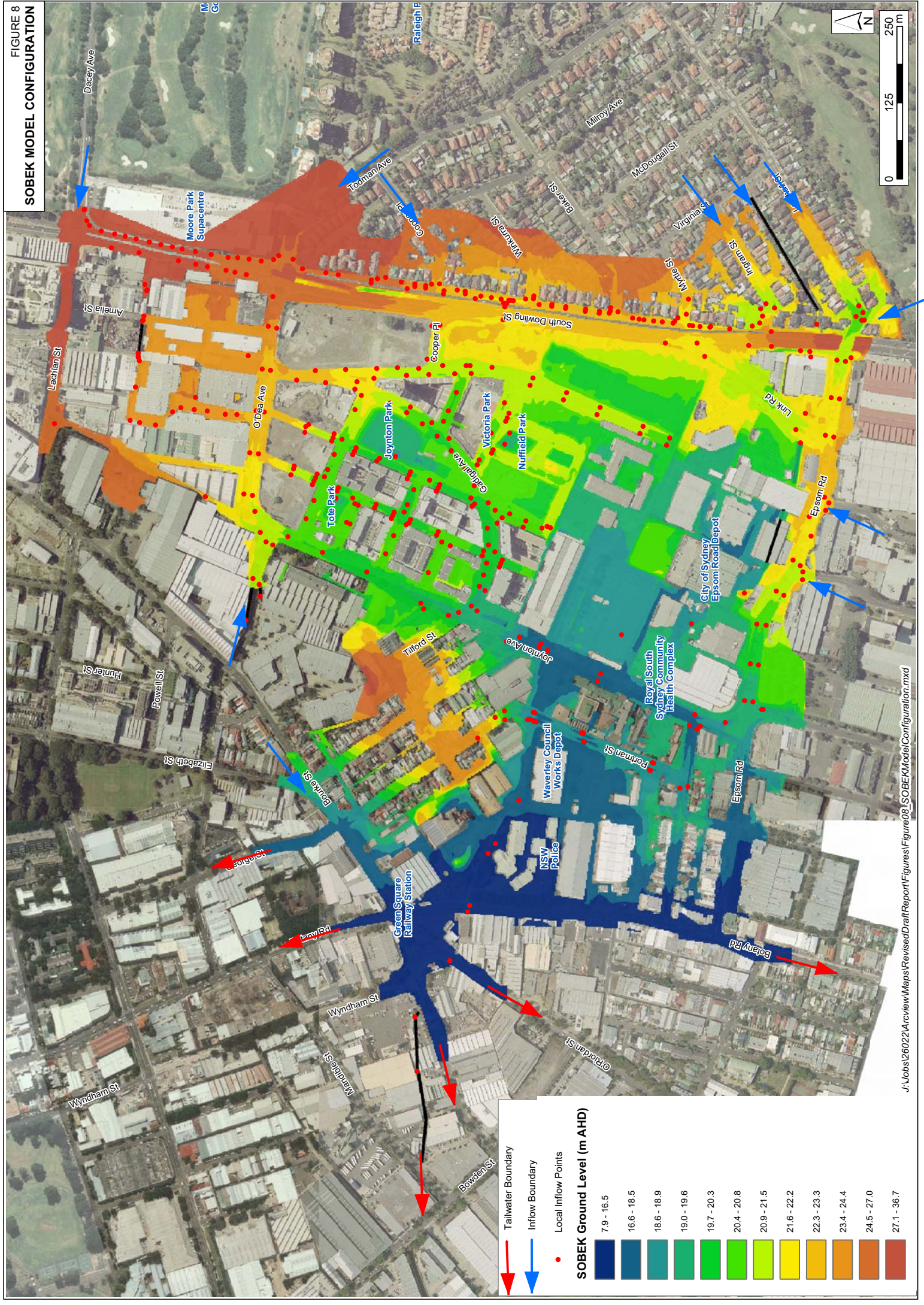


FIGURE 8
SOBEK MODEL CONFIGURATION



**RAINFALL PATTERNS
NOVEMBER 1984 STORM EVENTS**

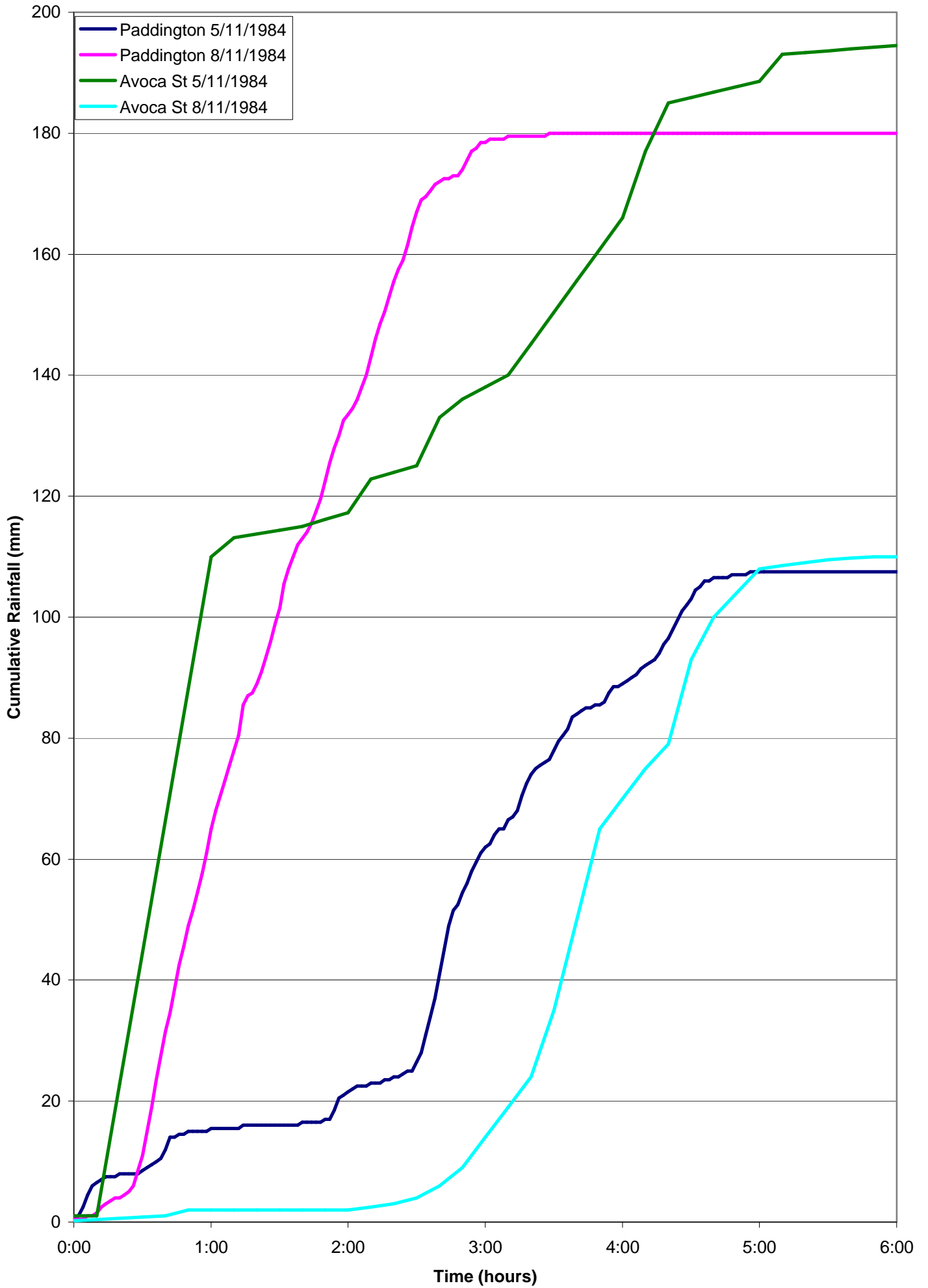


FIGURE 10
DRAINAGE NETWORK PEAK FLOWS
50% AEP EVENT

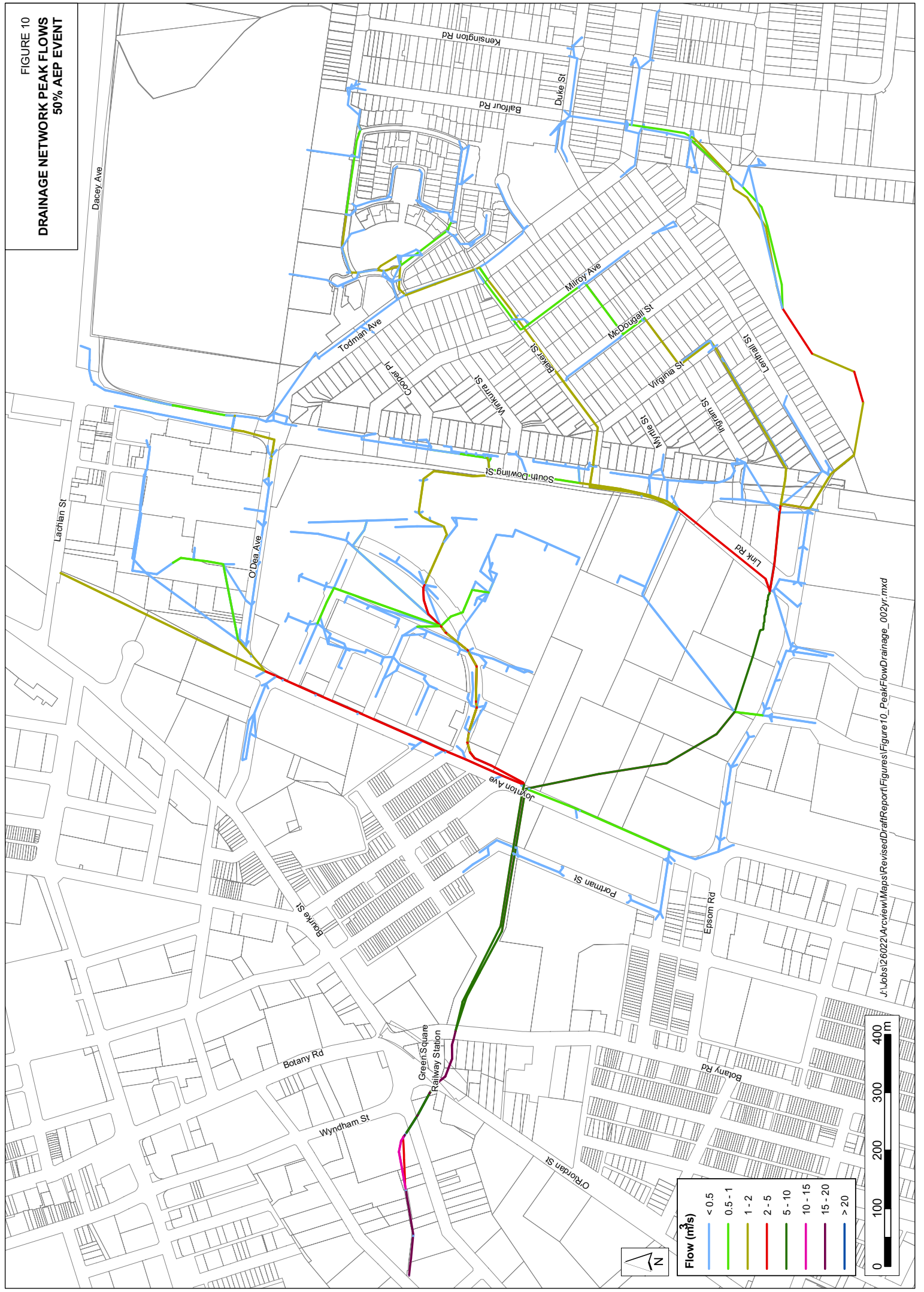


FIGURE 12
DRAINAGE NETWORK PEAK FLOWS
5% AEP EVENT

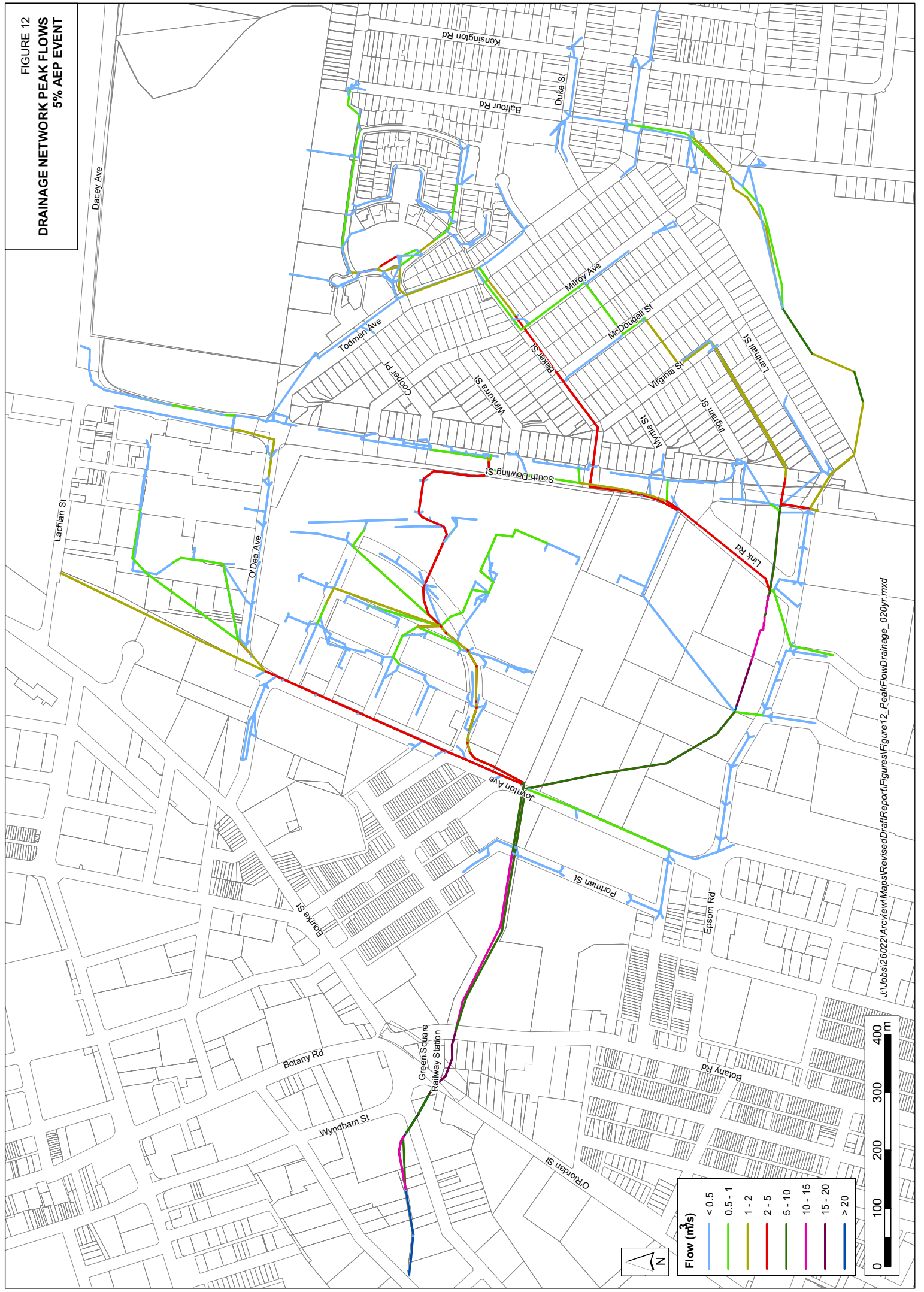


FIGURE 13
DRAINAGE NETWORK PEAK FLOWS
2% AEP EVENT

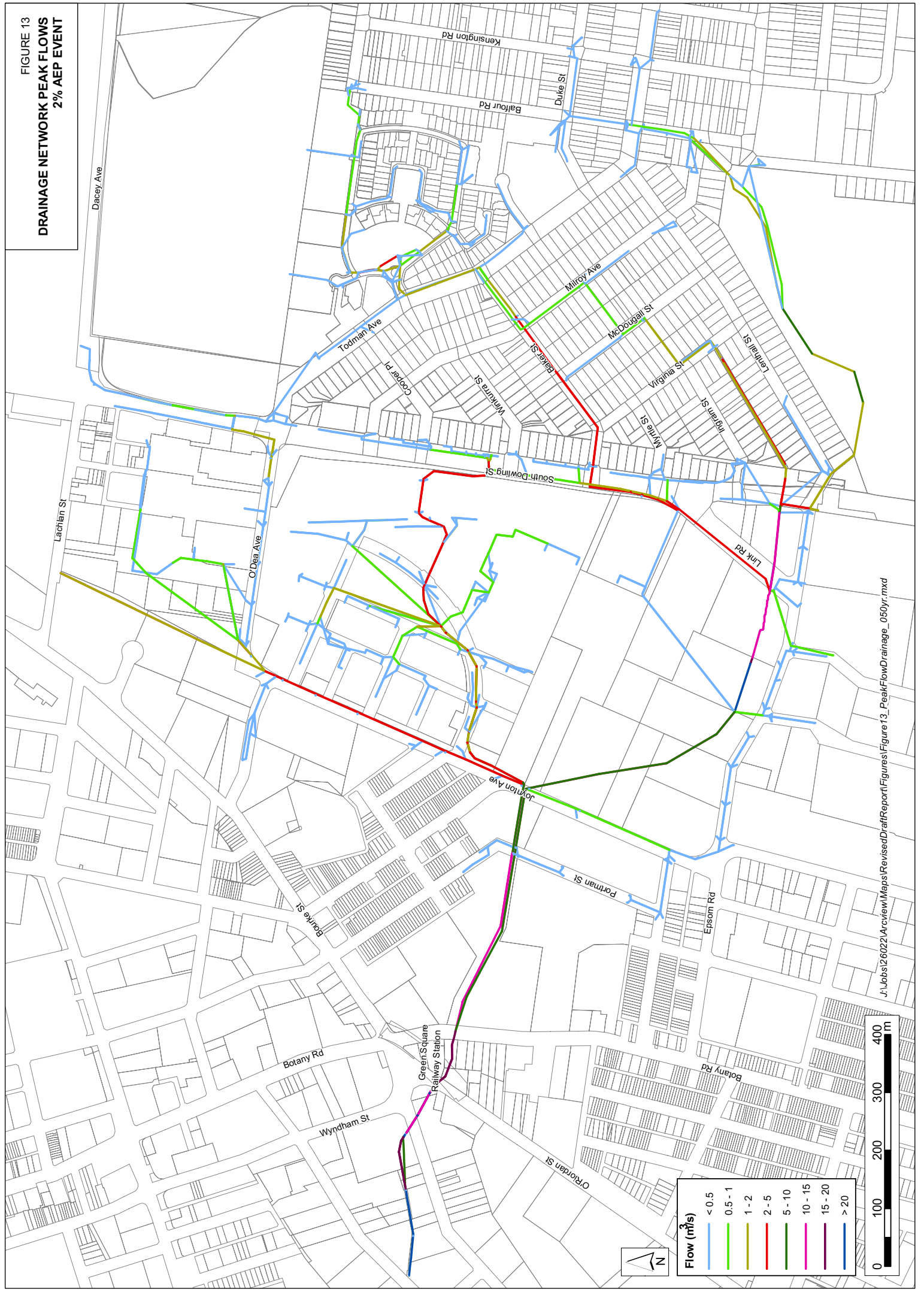


FIGURE 14
DRAINAGE NETWORK PEAK FLOWS
1% AEP EVENT

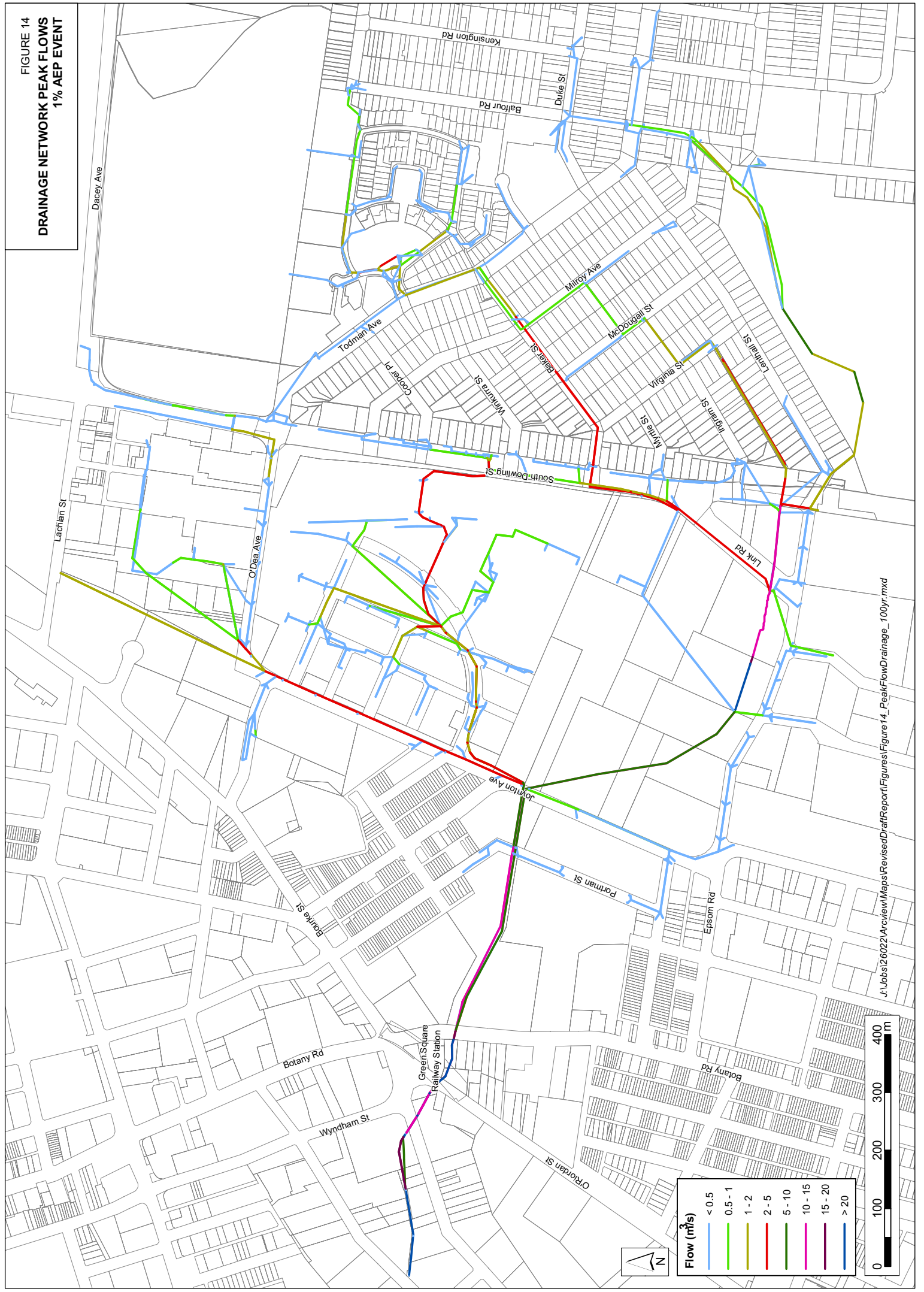


FIGURE 15
DRAINAGE NETWORK PEAK FLOWS
0.2% AEP EVENT

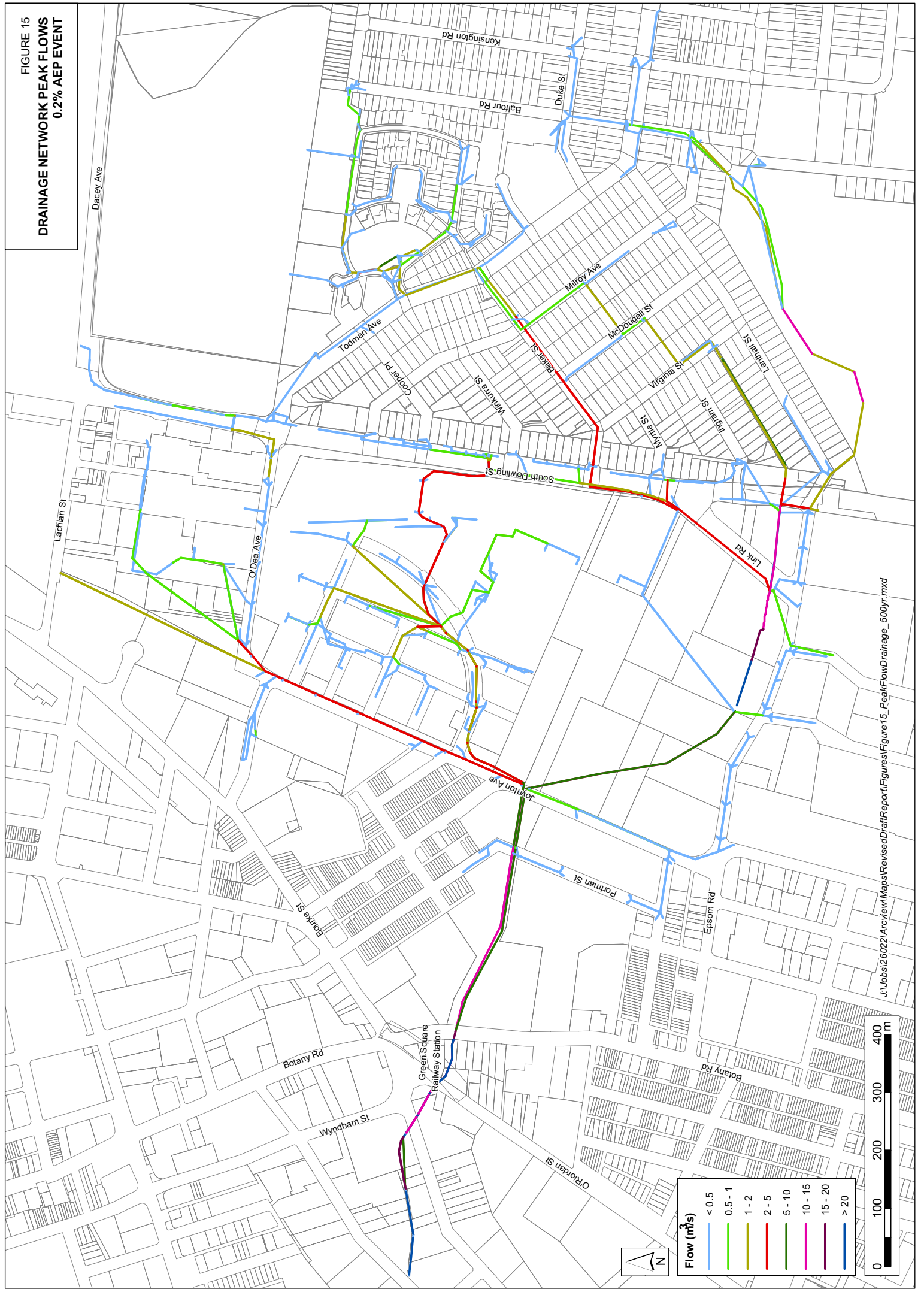
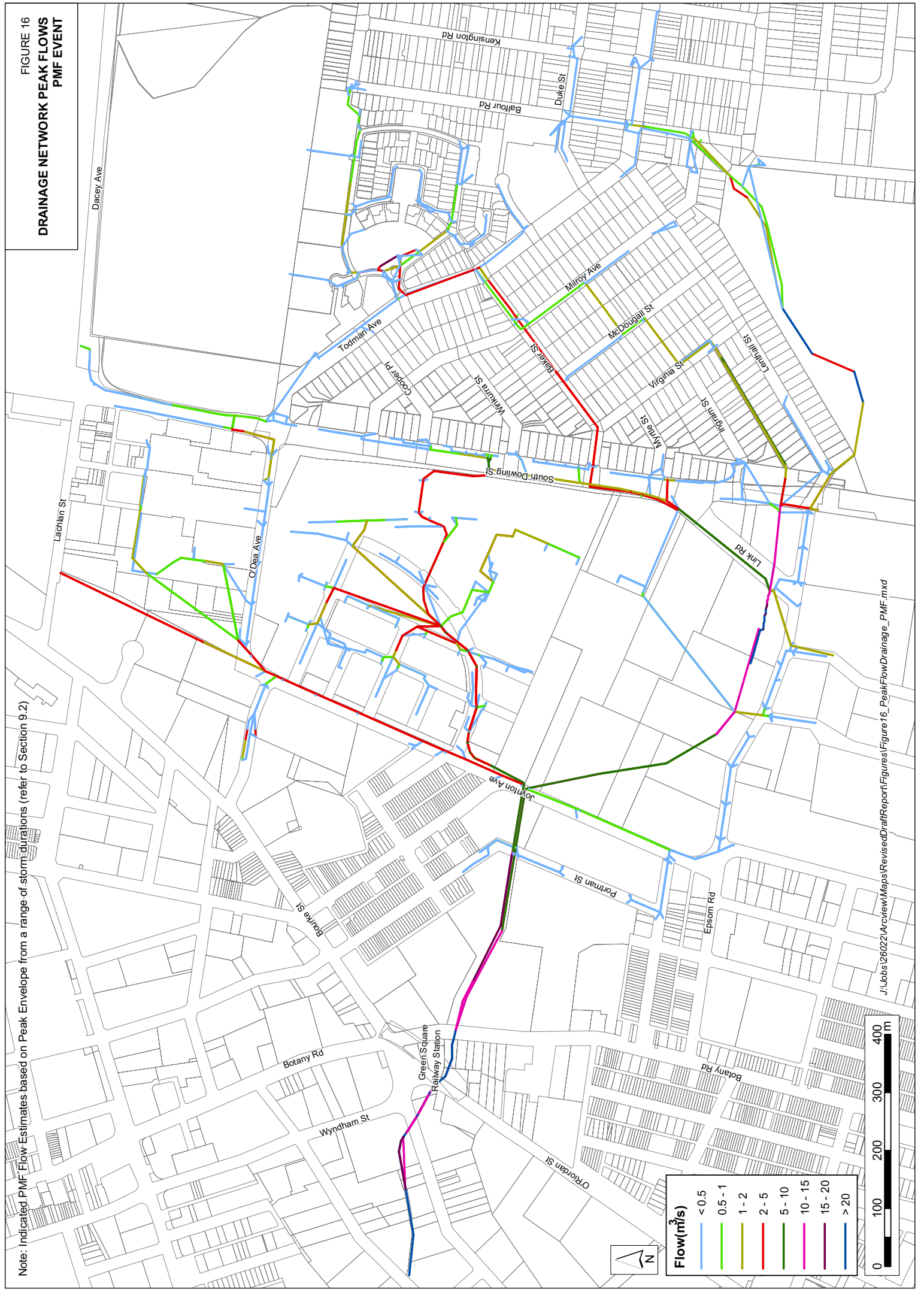


FIGURE 16
DRAINAGE NETWORK PEAK FLOWS
PMF EVENT

Note: Indicated PMF Flow Estimates based on Peak Envelope from a range of storm durations (refer to Section 9.2)



Flow (m ³ /s)	Color
< 0.5	Light Blue
0.5 - 1	Light Green
1 - 2	Yellow-Green
2 - 5	Red
5 - 10	Dark Green
10 - 15	Pink
15 - 20	Purple
> 20	Dark Blue

FIGURE 17
PEAK FLOW SUMMARY
50% AEP EVENT

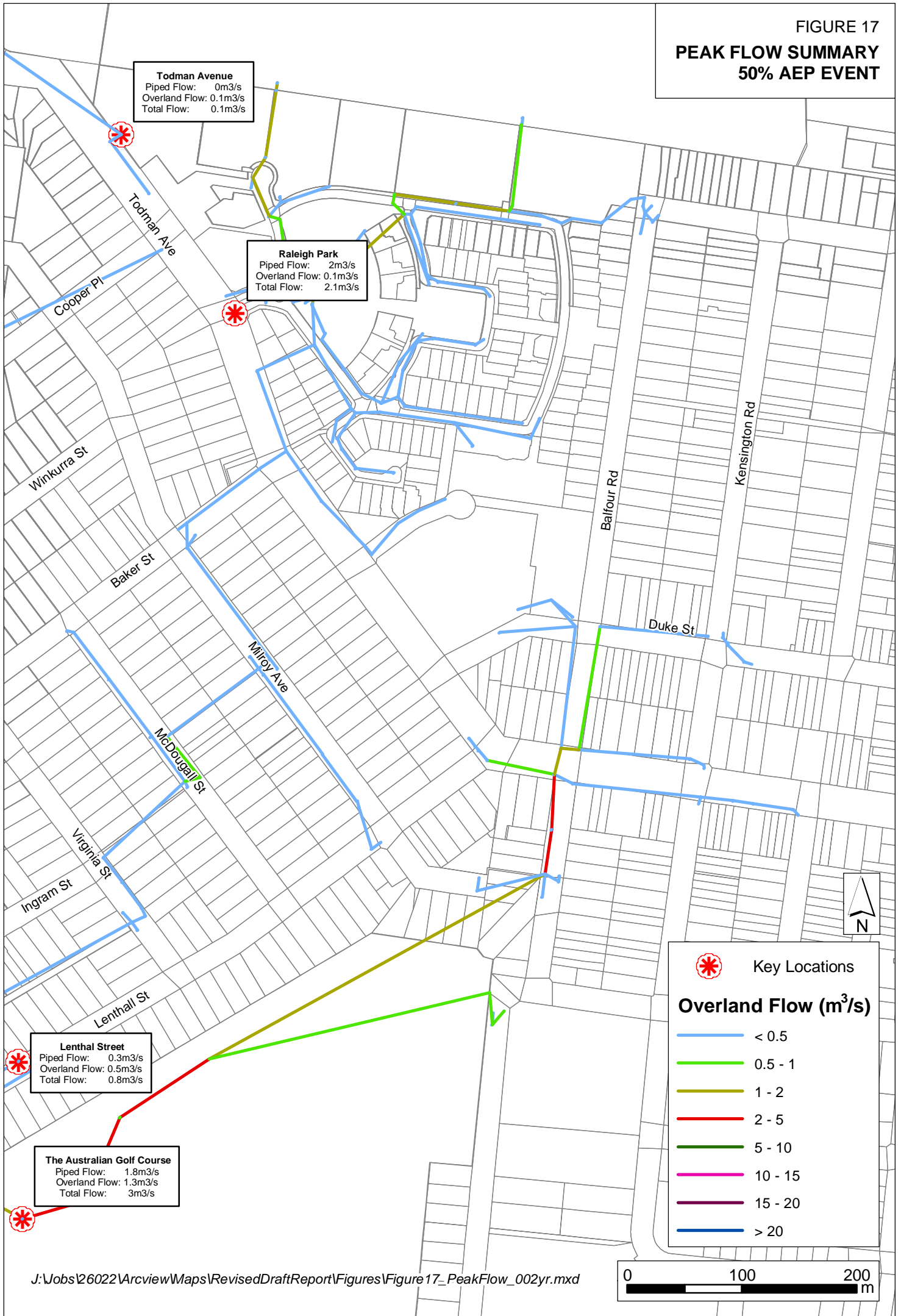


FIGURE 18
PEAK FLOW SUMMARY
20% AEP EVENT

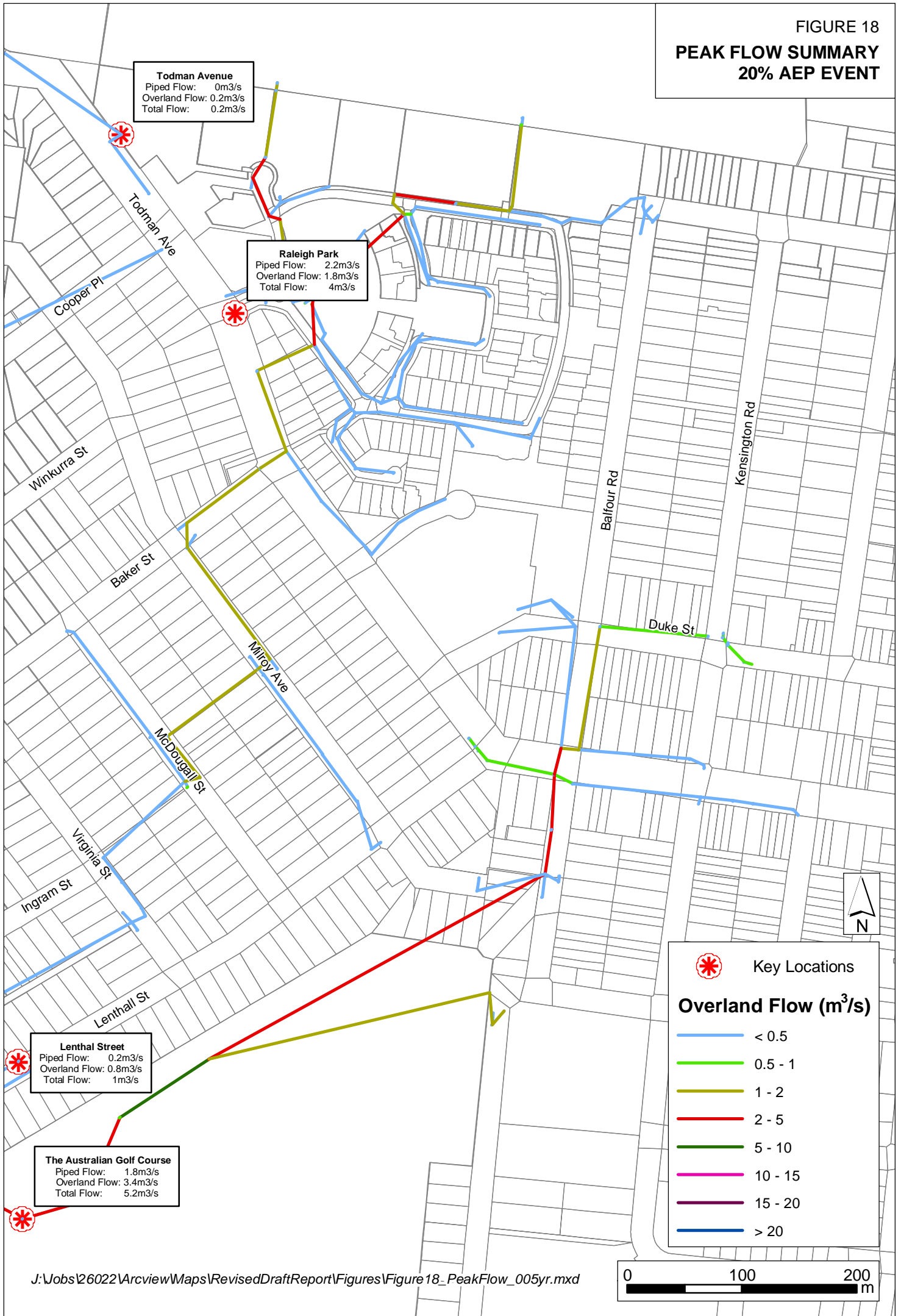


FIGURE 19
PEAK FLOW SUMMARY
5% AEP EVENT

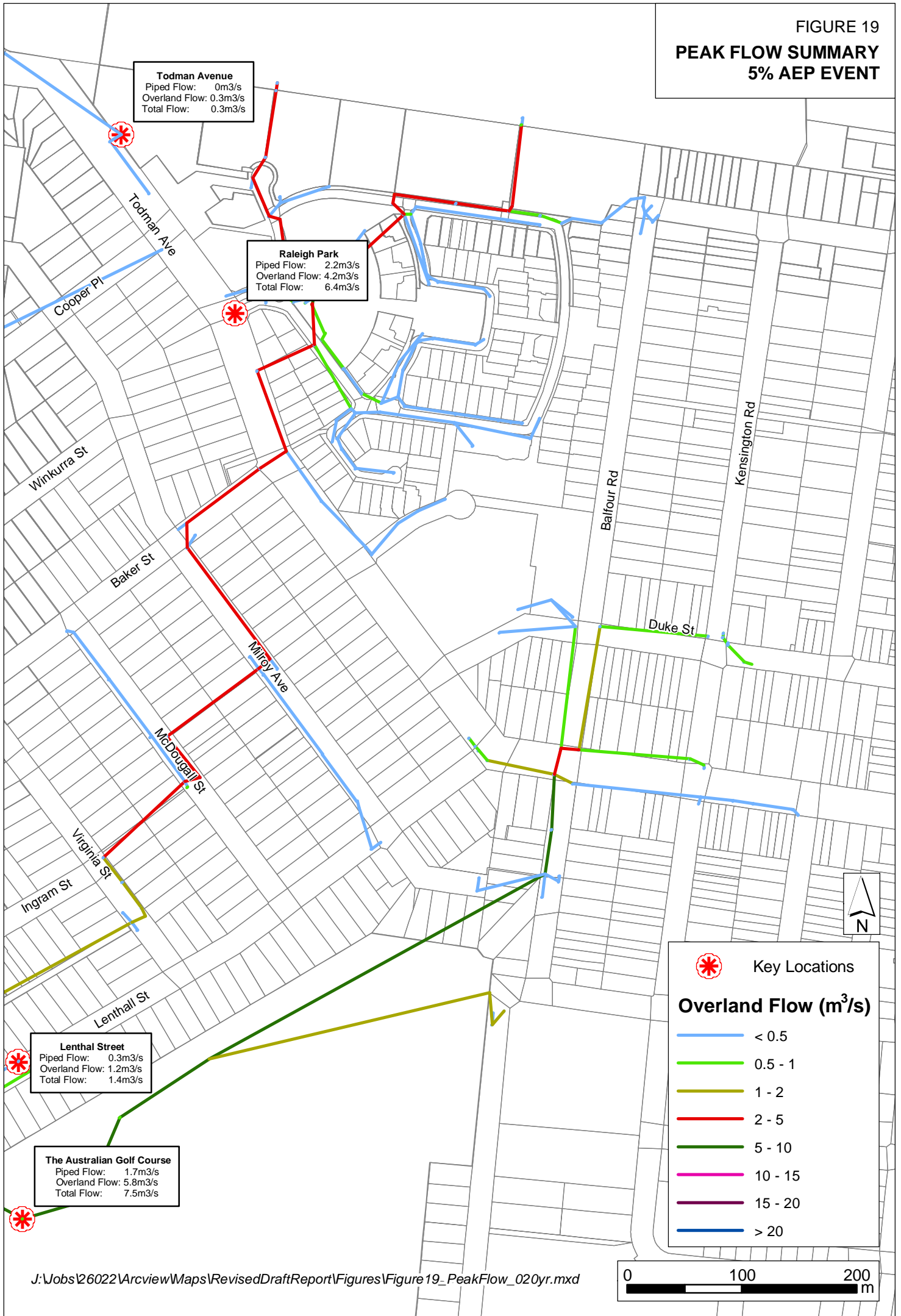


FIGURE 20
PEAK FLOW SUMMARY
2% AEP EVENT

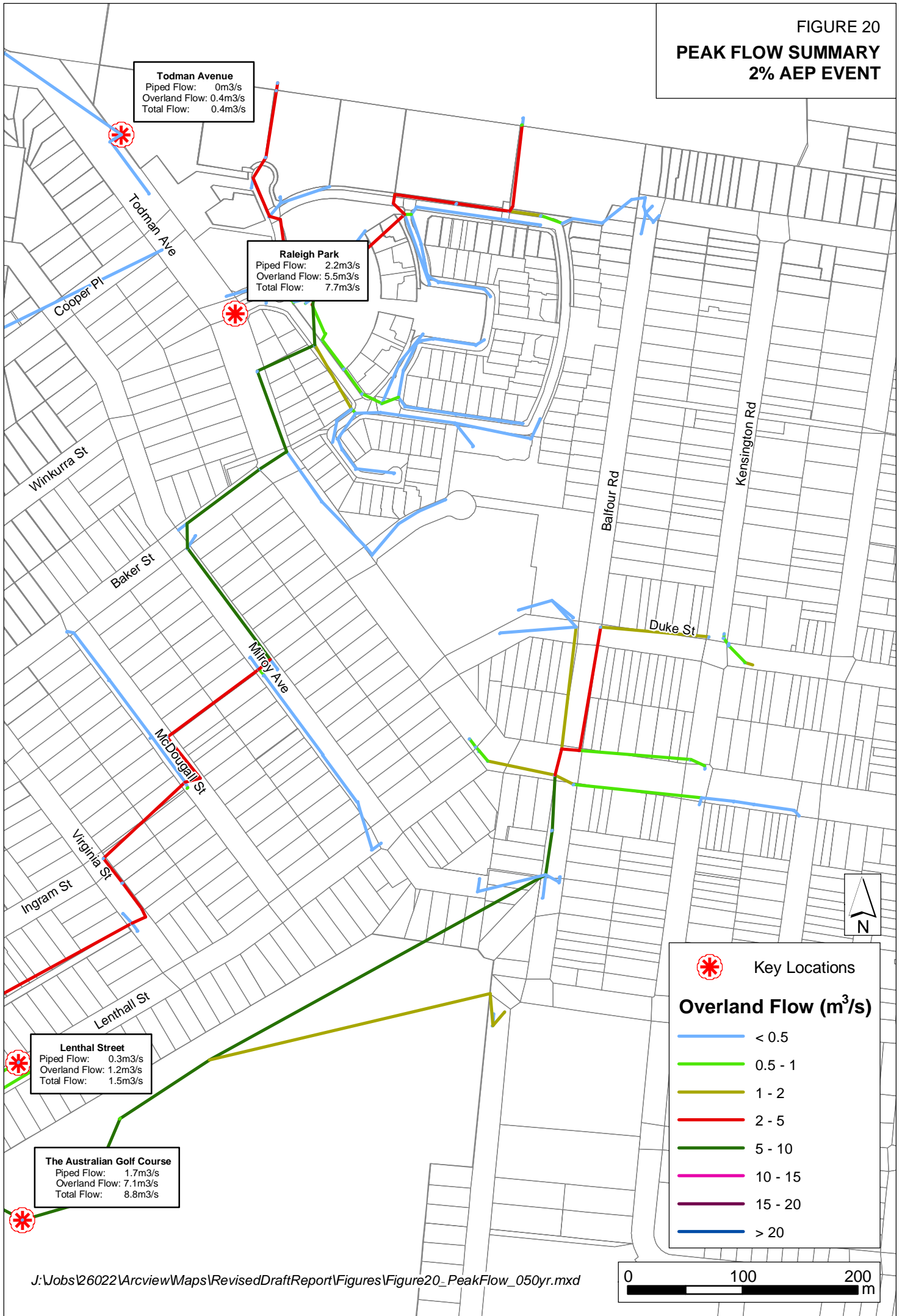


FIGURE 21
PEAK FLOW SUMMARY
1% AEP EVENT

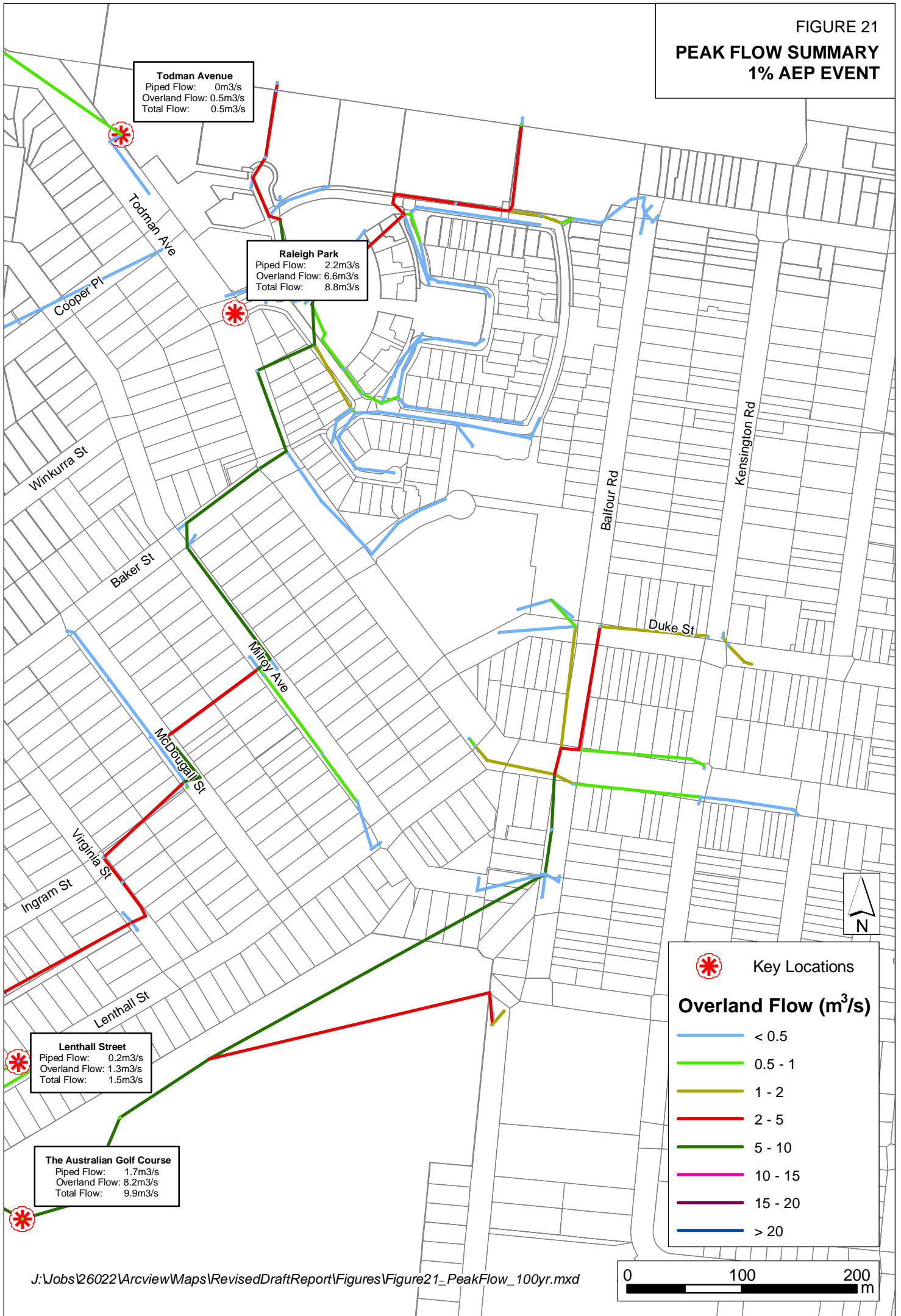
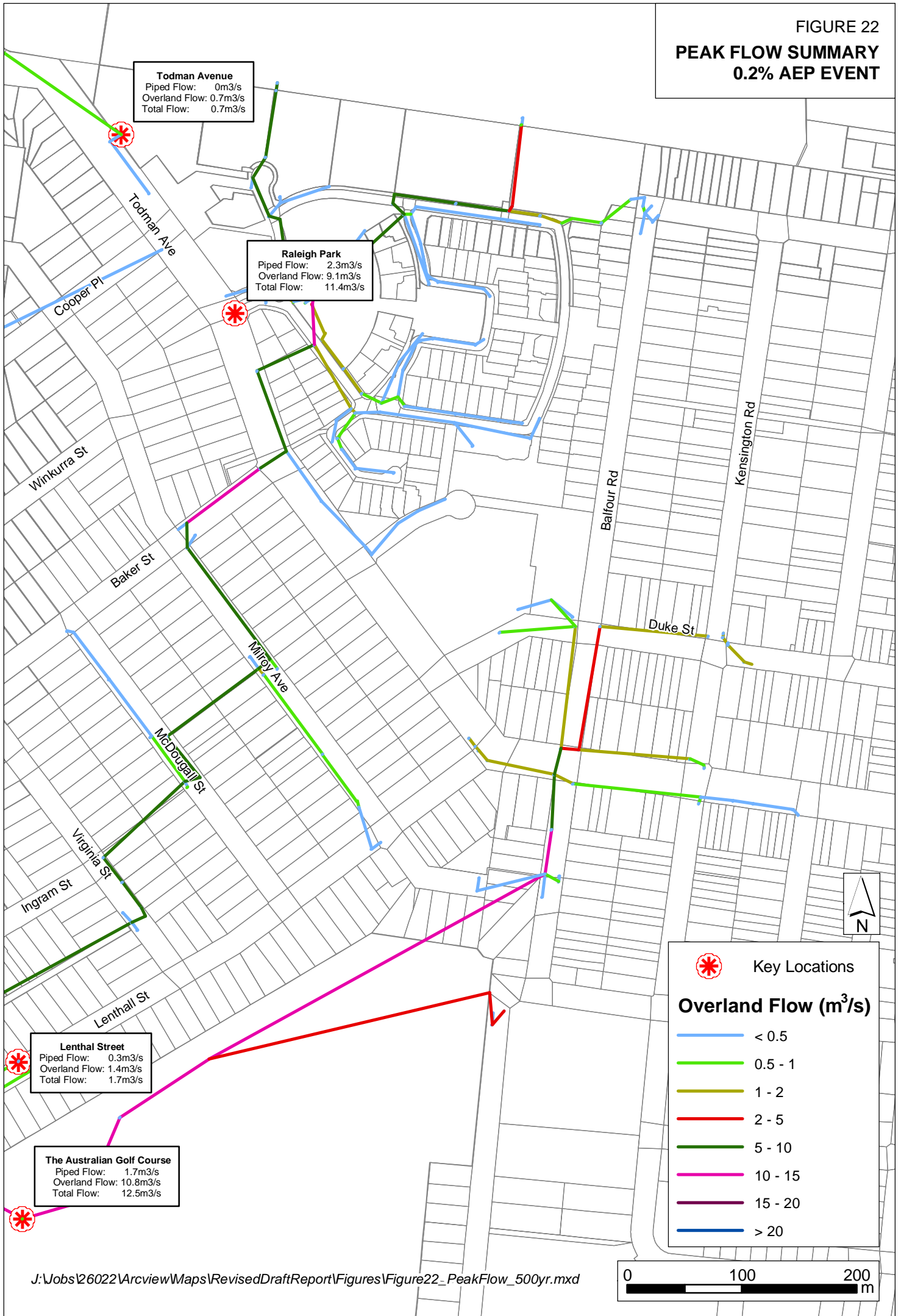


FIGURE 22
PEAK FLOW SUMMARY
0.2% AEP EVENT



Note: Indicated PMF Flow Estimates based on Peak Envelope from a range of storm durations (refer to Section 9.2)

FIGURE 23
PEAK FLOW SUMMARY
PMF EVENT

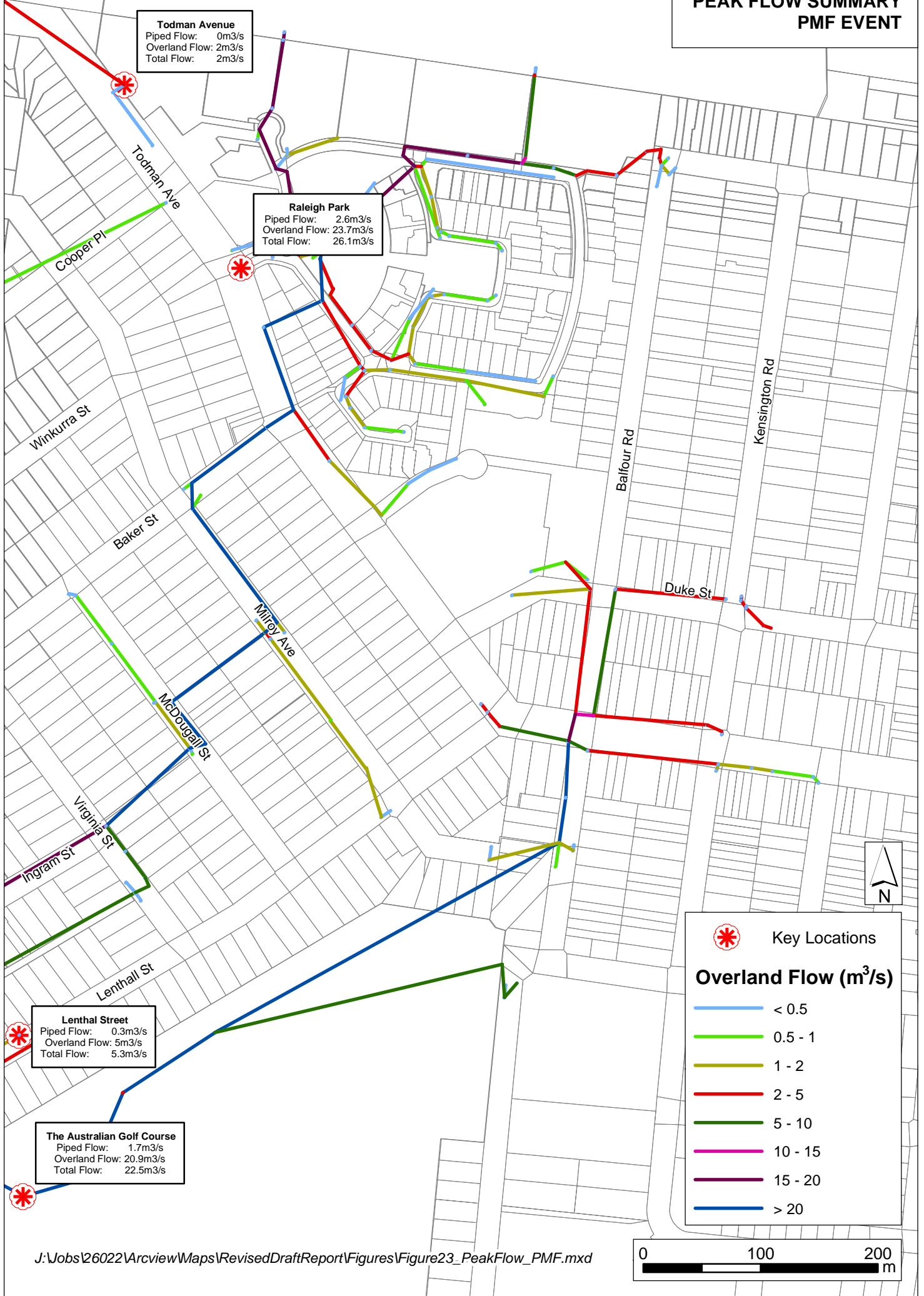


FIGURE 24

PEAK HEIGHT PROFILES RALEIGH PARK BRANCH DESIGN FLOOD EVENTS

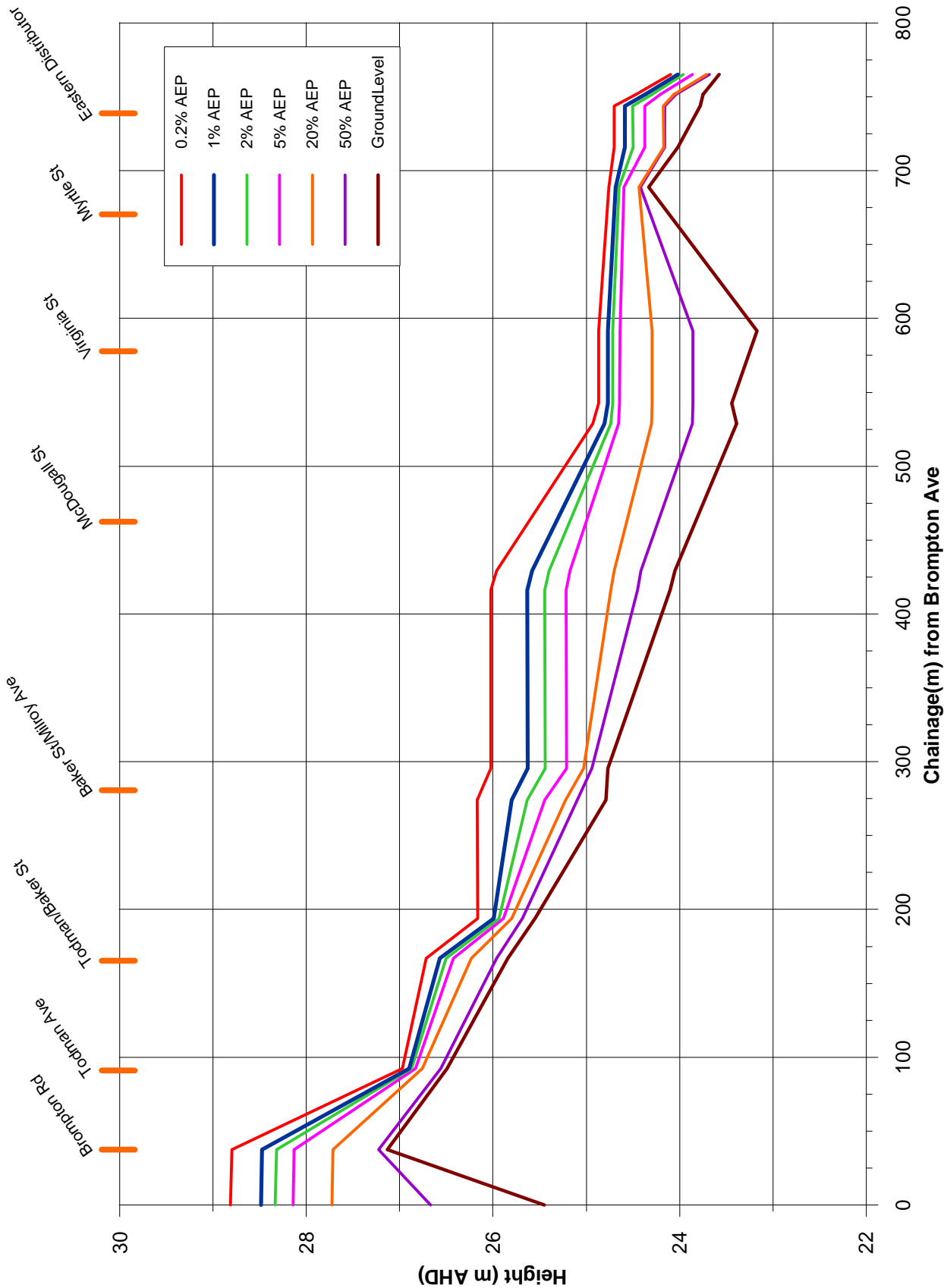
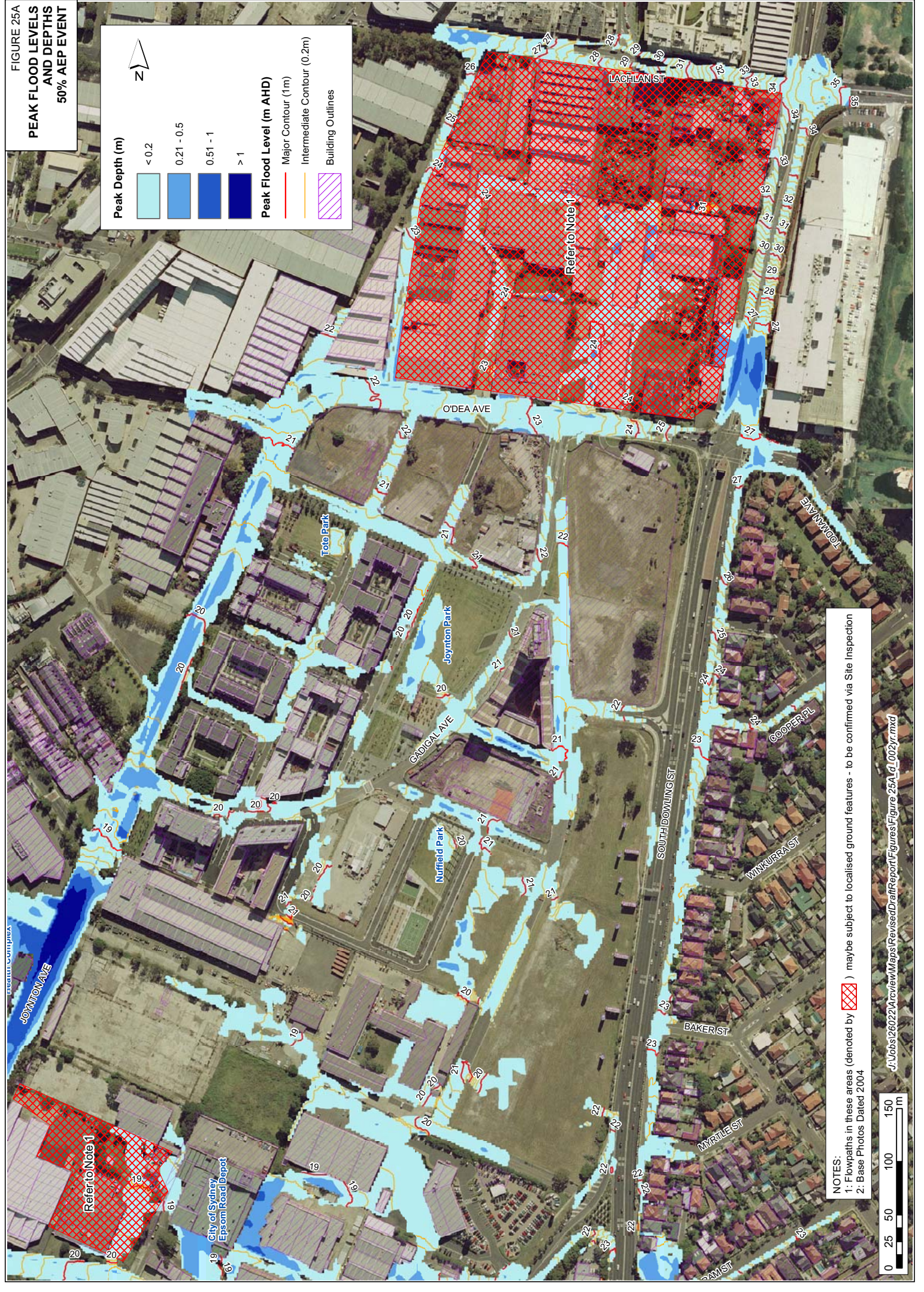
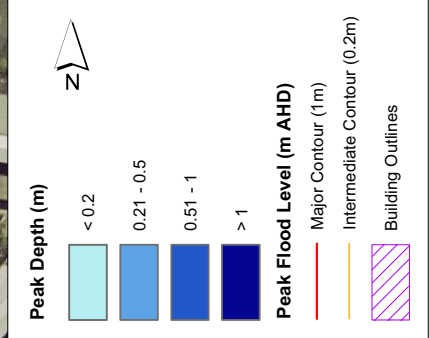


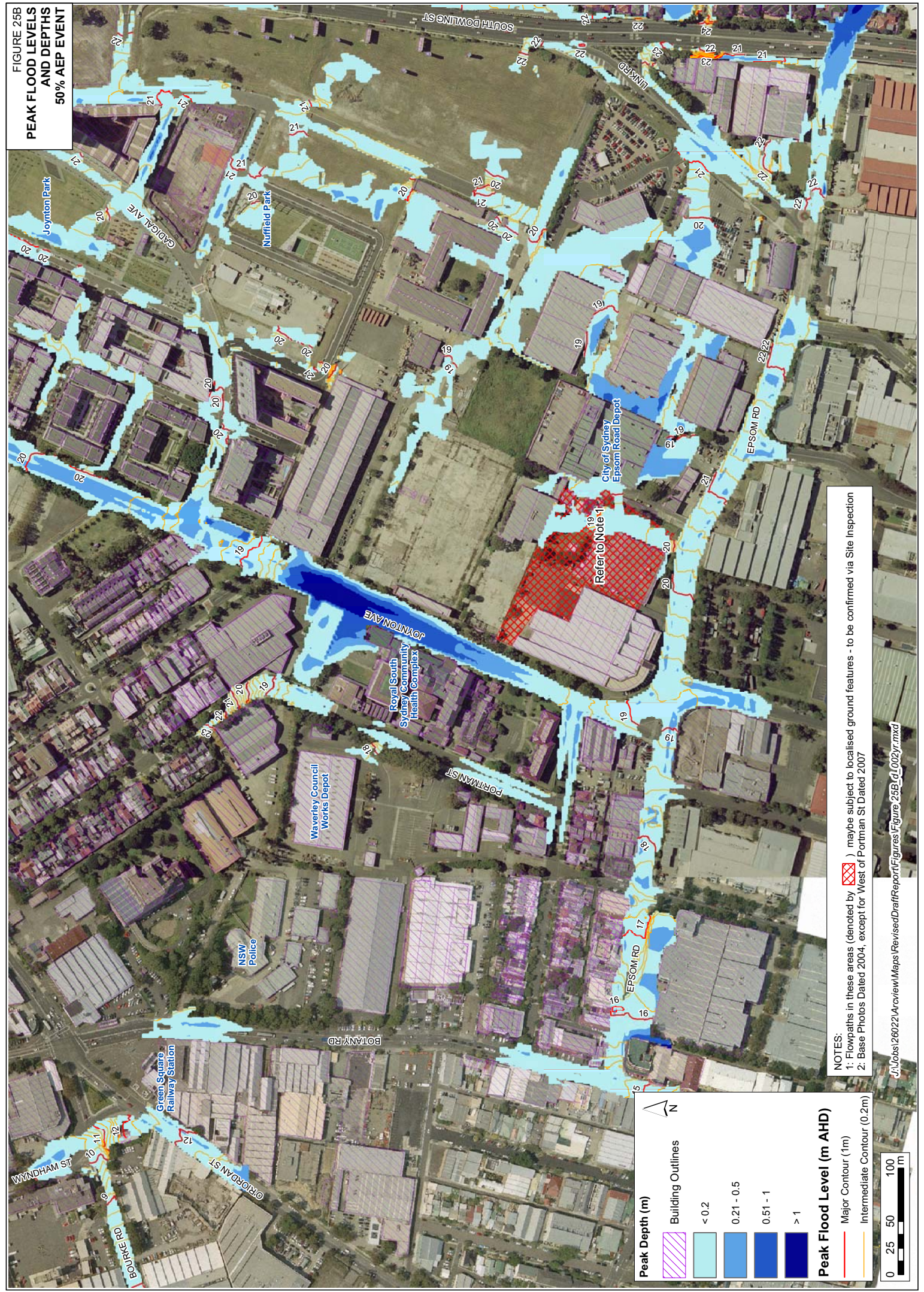
FIGURE 25A
**PEAK FLOOD LEVELS
 AND DEPTHS
 50% AEP EVENT**




NOTES:
 1: Flowpaths in these areas (denoted by ) maybe subject to localised ground features - to be confirmed via Site Inspection
 2: Base Photos Dated 2004








FIGURE 25B
**PEAK FLOOD LEVELS
 AND DEPTHS
 50% AEP EVENT**





NOTES:
 1: Flowpaths in these areas (denoted by ) may be subject to localised ground features - to be confirmed via Site Inspection
 2: Base Photos Dated 2004, except for West of Portman St Dated 2007

J:\Jobs\1260221\Arcview\Maps\RevisedDraftReport\Figures\Figure 25B\01_002\yr.mxd

Peak Depth (m)

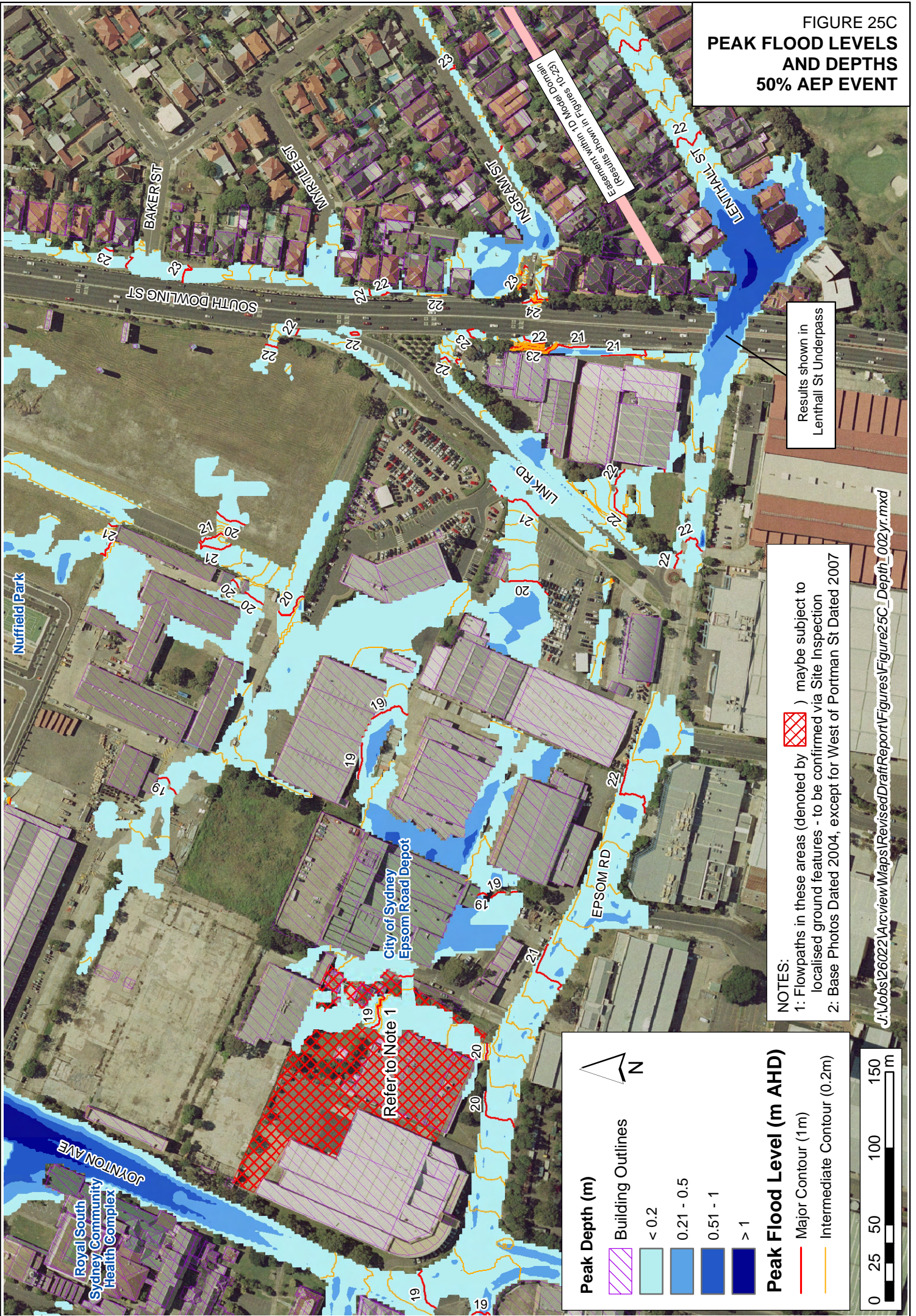
	Building Outlines
	< 0.2
	0.21 - 0.5
	0.51 - 1
	> 1

Peak Flood Level (m AHD)

	Major Contour (1m)
	Intermediate Contour (0.2m)

Scale: 0 25 50 100 m



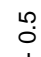
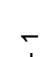

**FIGURE 25C
PEAK FLOOD LEVELS
AND DEPTHS
50% AEP EVENT**





Results shown in Lenthall St Underpass

NOTES:
 1: Flowpaths in these areas (denoted by ) may be subject to localised ground features - to be confirmed via Site Inspection
 2: Base Photos Dated 2004, except for West of Portman St Dated 2007

Peak Depth (m)

	Building Outlines
	< 0.2
	0.21 - 0.5
	0.51 - 1
	> 1

Peak Flood Level (m AHD)

	Major Contour (1m)
	Intermediate Contour (0.2m)

0 25 50 100 150 m

