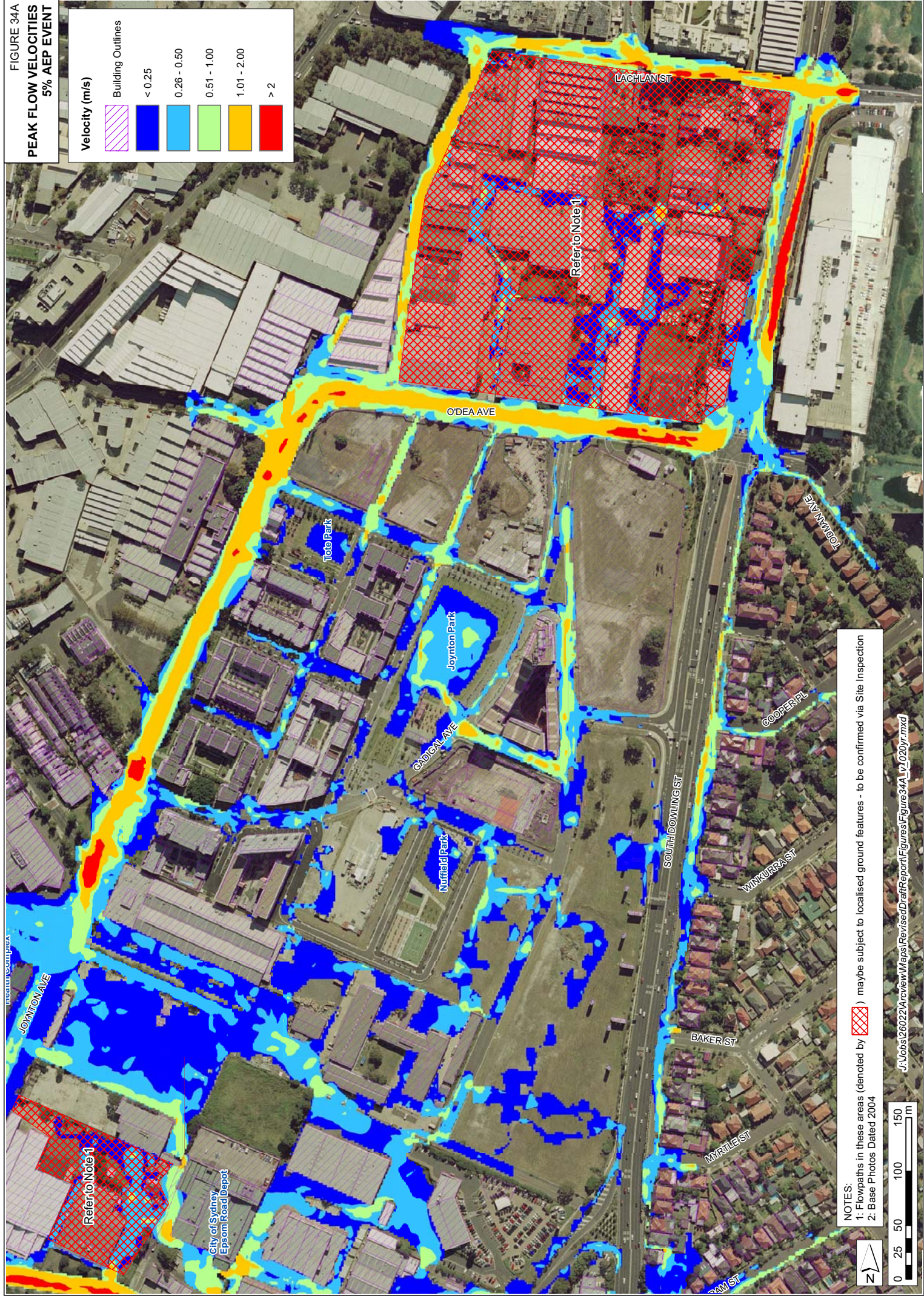
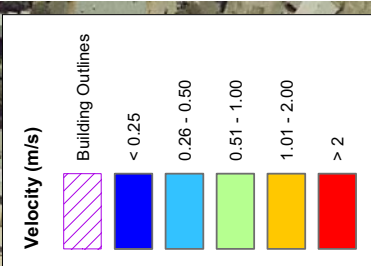


FIGURE 34A

PEAK FLOW VELOCITIES
5% AEP EVENT



NOTES:
 1: Flowpaths in these areas (denoted by) may be subject to localised ground features - to be confirmed via Site Inspection
 2: Base Photos Dated 2004

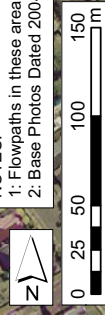
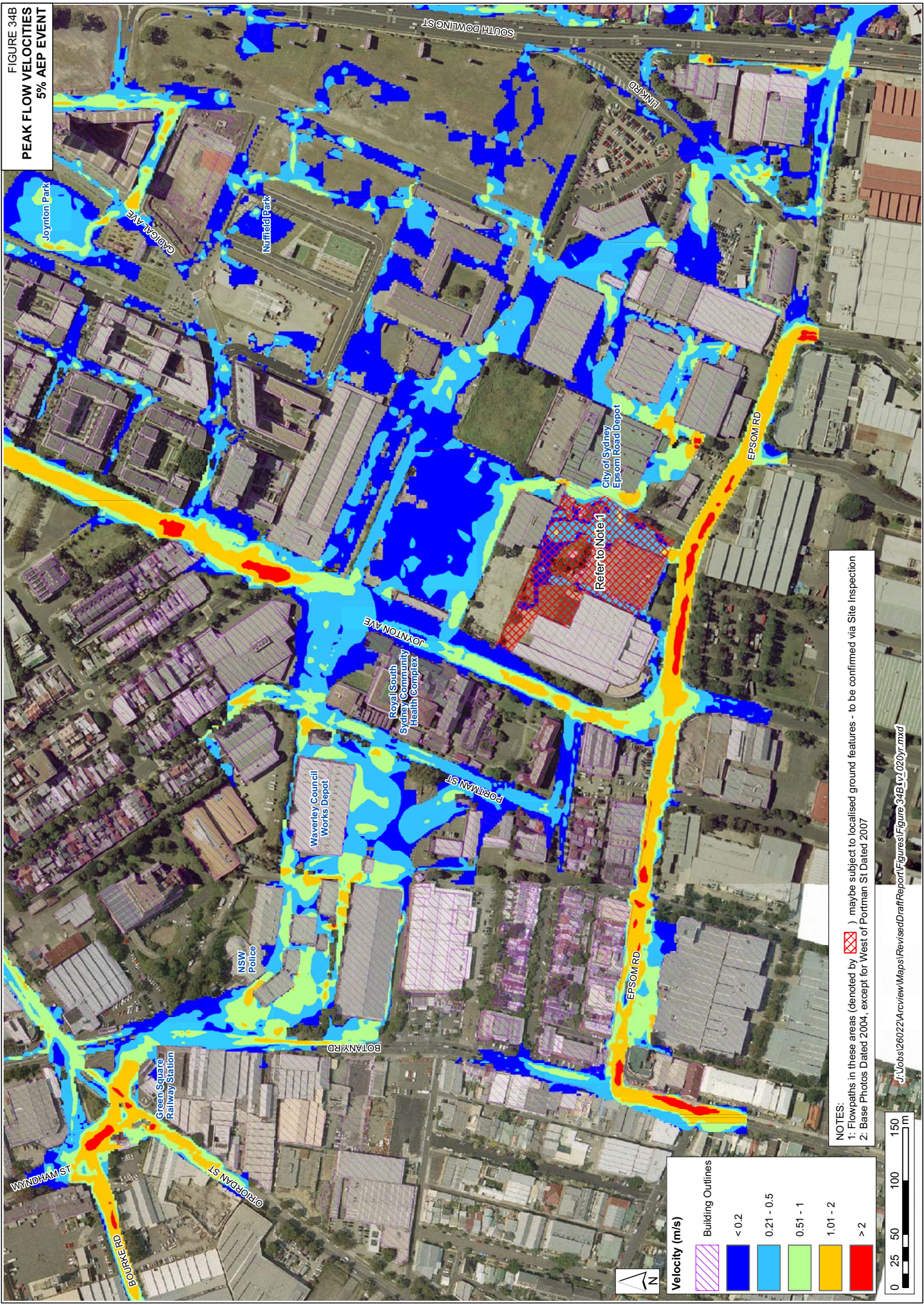
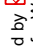


FIGURE 34B
PEAK FLOW VELOCITIES
5% AEP EVENT



NOTES:
 1: Flowpaths in these areas (denoted by ) may be subject to localised ground features - to be confirmed via Site Inspection
 2: Base Photos Dated 2004, except for West of Portman St Dated 2007

Velocity (m/s)







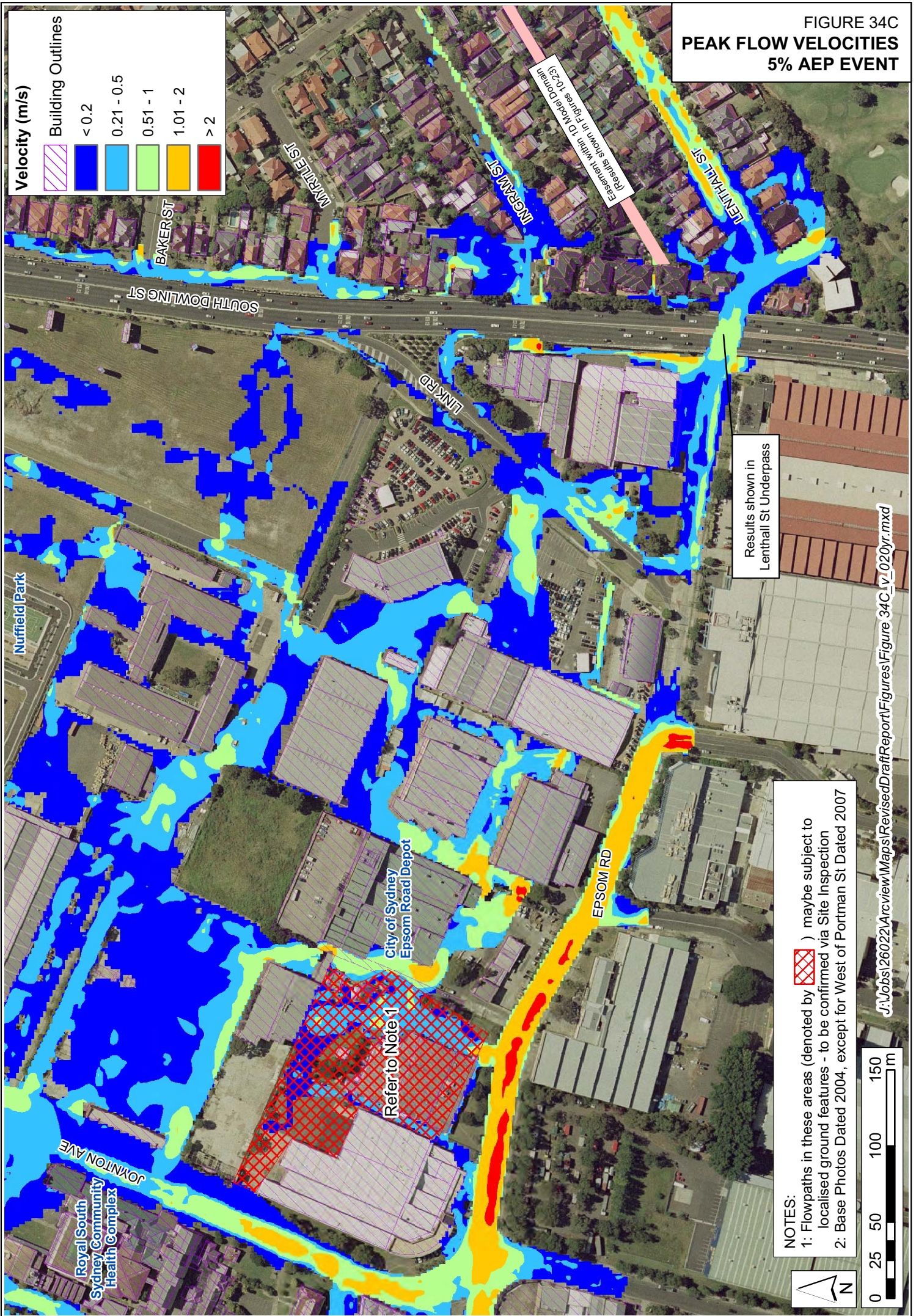
	Building Outlines
	<math>< 0.2</math>
	0.21 - 0.5
	0.51 - 1
	1.01 - 2
	> 2



FIGURE 34C
PEAK FLOW VELOCITIES
5% AEP EVENT



Velocity (m/s)	Building Outlines
< 0.2	
0.21 - 0.5	
0.51 - 1	
1.01 - 2	
> 2	

NOTES:
 1: Flowpaths in these areas (denoted by ) maybe subject to localised ground features - to be confirmed via Site Inspection
 2: Base Photos Dated 2004, except for West of Portman St Dated 2007

Results shown in
 Lenthall St Underpass

Refer to Note 1

City of Sydney
 Epsom Road Depot

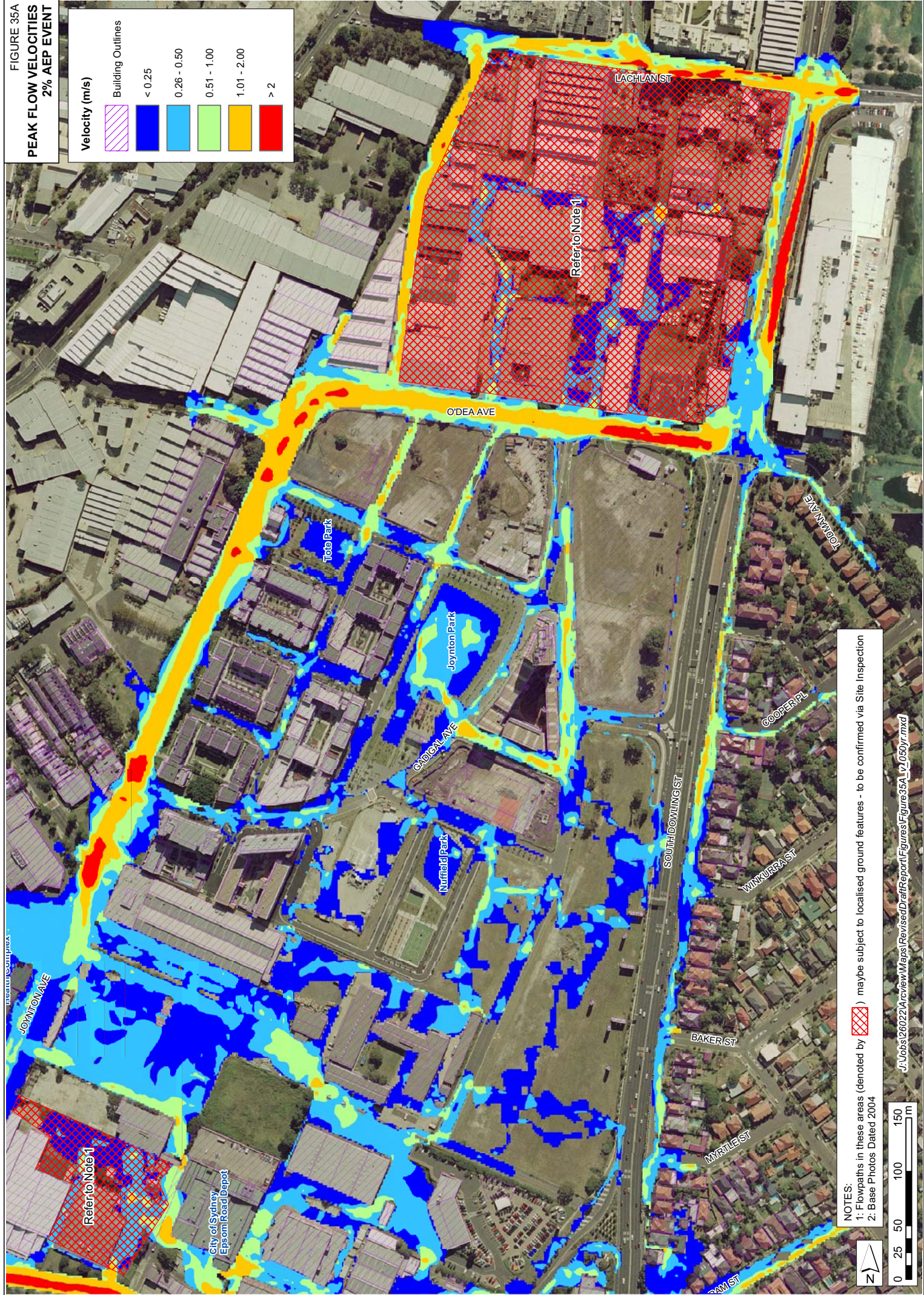
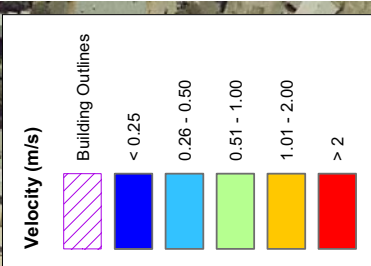
Royal South
 Sydney Community
 Health Complex

J:\Jobs\126022\Arcview\Maps\RevisedDraftReport\Figures\Figure 34C_v_020yr.mxd



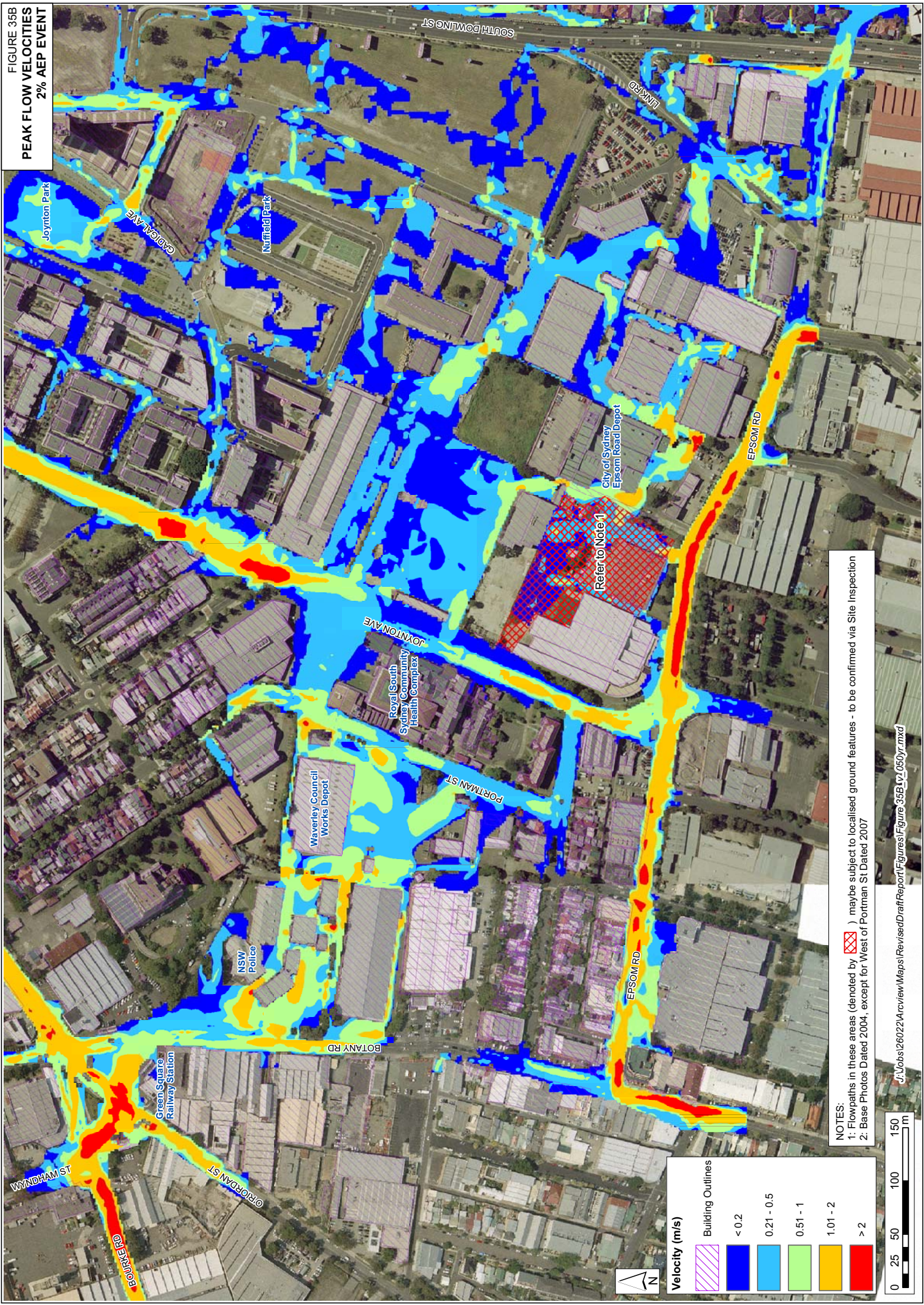
FIGURE 35A

PEAK FLOW VELOCITIES
2% AEP EVENT



NOTES:
 1: Flowpaths in these areas (denoted by) may be subject to localised ground features - to be confirmed via Site Inspection
 2: Base Photos Dated 2004

FIGURE 35B
PEAK FLOW VELOCITIES
2% AEP EVENT

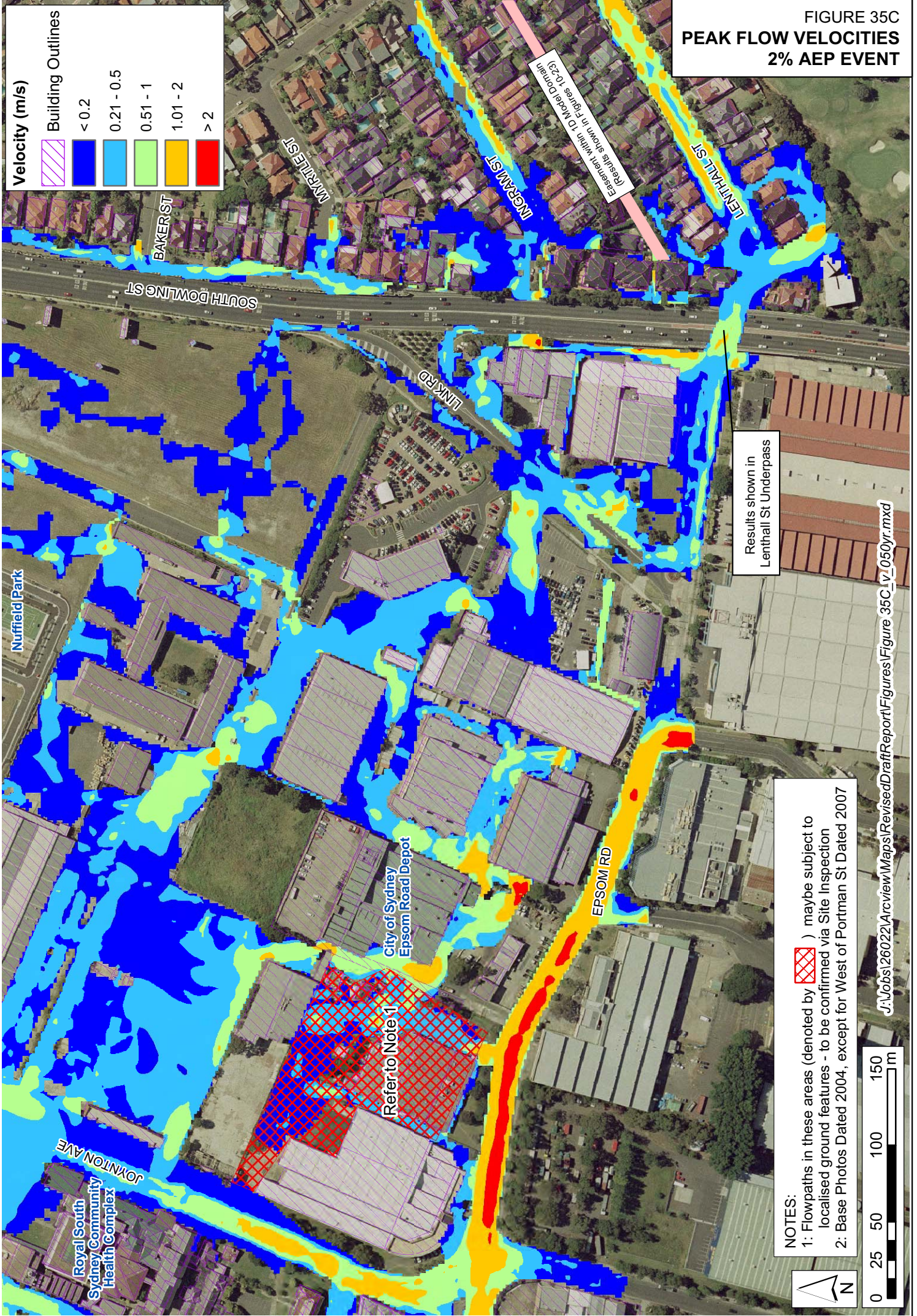


Velocity (m/s)

	Building Outlines
	<math>< 0.2</math>
	0.21 - 0.5
	0.51 - 1
	1.01 - 2
	> 2

NOTES:
 1: Flowpaths in these areas (denoted by) may be subject to localised ground features - to be confirmed via Site Inspection
 2: Base Photos Dated 2004, except for West of Portman St Dated 2007

FIGURE 35C
PEAK FLOW VELOCITIES
2% AEP EVENT



Velocity (m/s)	Building Outlines
< 0.2	
0.21 - 0.5	
0.51 - 1	
1.01 - 2	
> 2	

NOTES:
 1: Flowpaths in these areas (denoted by) maybe subject to localised ground features - to be confirmed via Site Inspection
 2: Base Photos Dated 2004, except for West of Portman St Dated 2007



J:\Jobs\126022\Arcview\Maps\RevisedDraftReport\Figures\Figure 35C_lv_050yr.mxd

Results shown in
 Lenthall St Underpass

Results shown in 17 Model Domain
 (Results shown in Figures 10-23)

Refer to Note 1

City of Sydney
 Epsom Road Depot

Royal South
 Sydney Community
 Health Complex

Nuffield Park

JOHNSON AVE

SOUTH DOWLING ST

BAKER ST

MARBLE ST

INGRAM ST

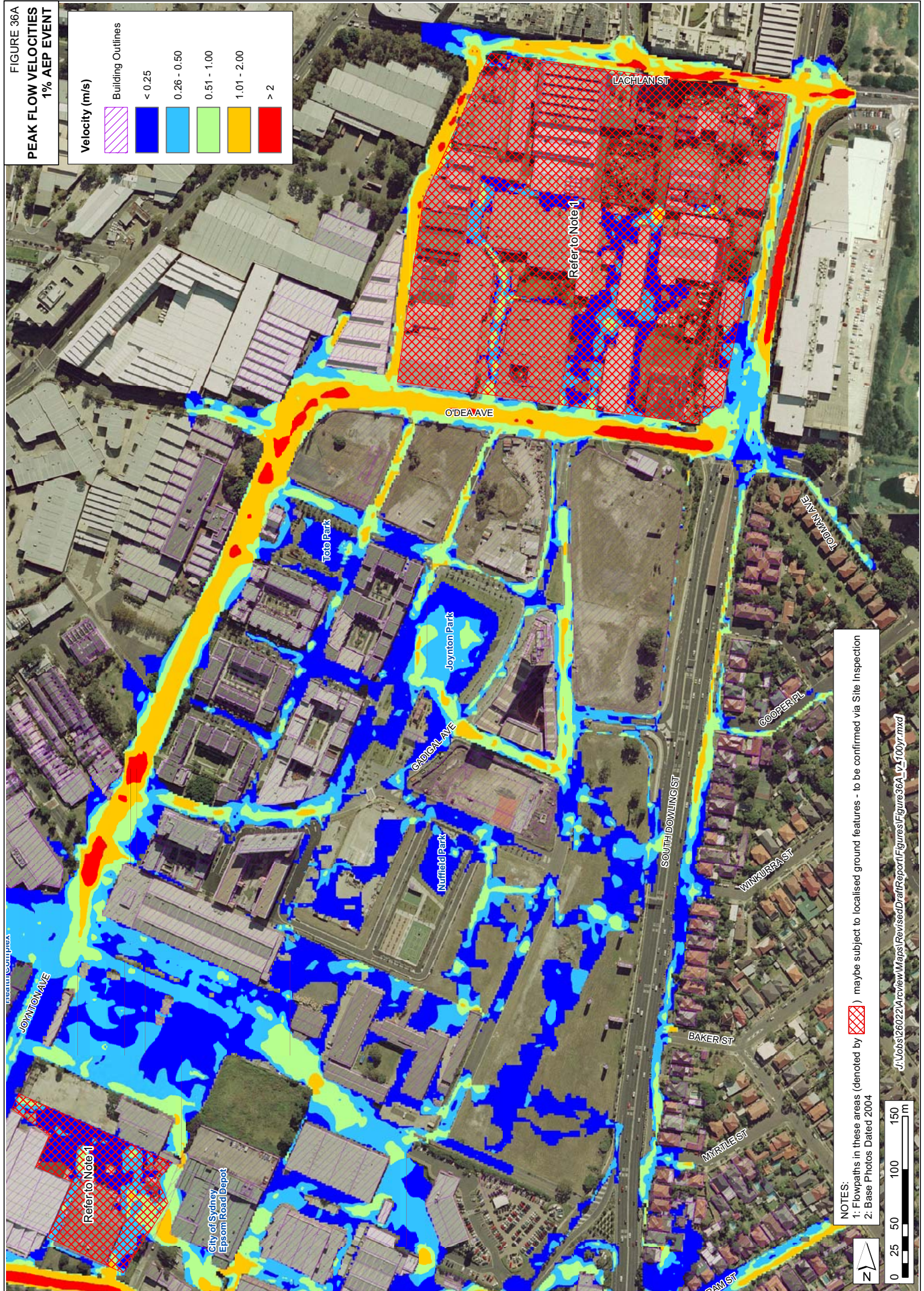
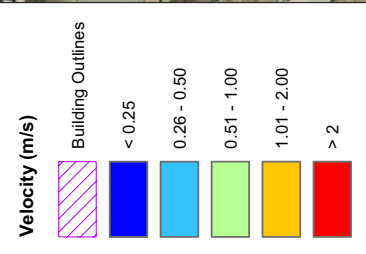
LENTHALL ST

LINK RD

EPSOM RD

FIGURE 36A

PEAK FLOW VELOCITIES
1% AEP EVENT




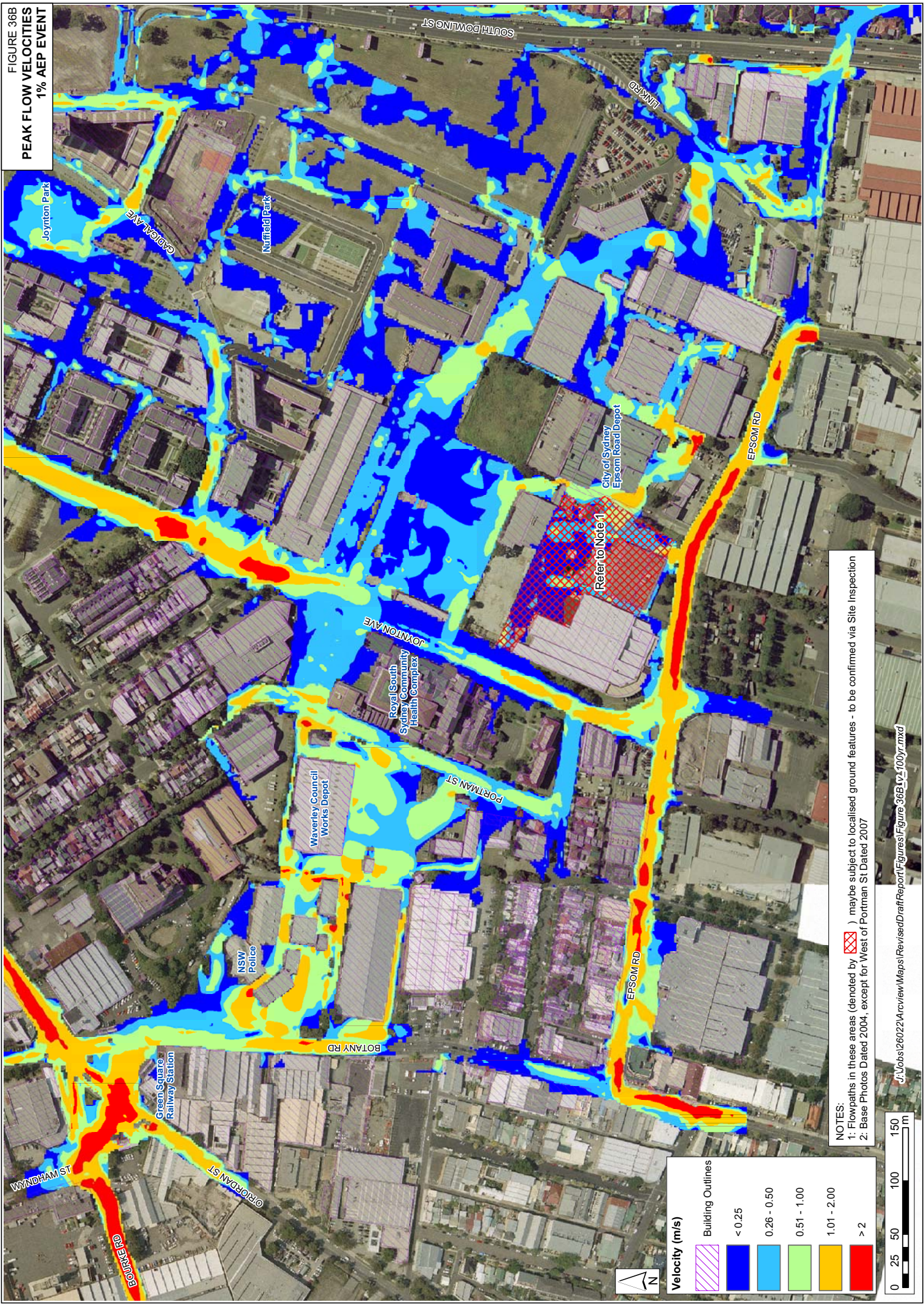
NOTES:
1: Flowpaths in these areas (denoted by ) may be subject to localised ground features - to be confirmed via Site Inspection
2: Base Photos Dated 2004



FIGURE 36B
PEAK FLOW VELOCITIES
1% AEP EVENT

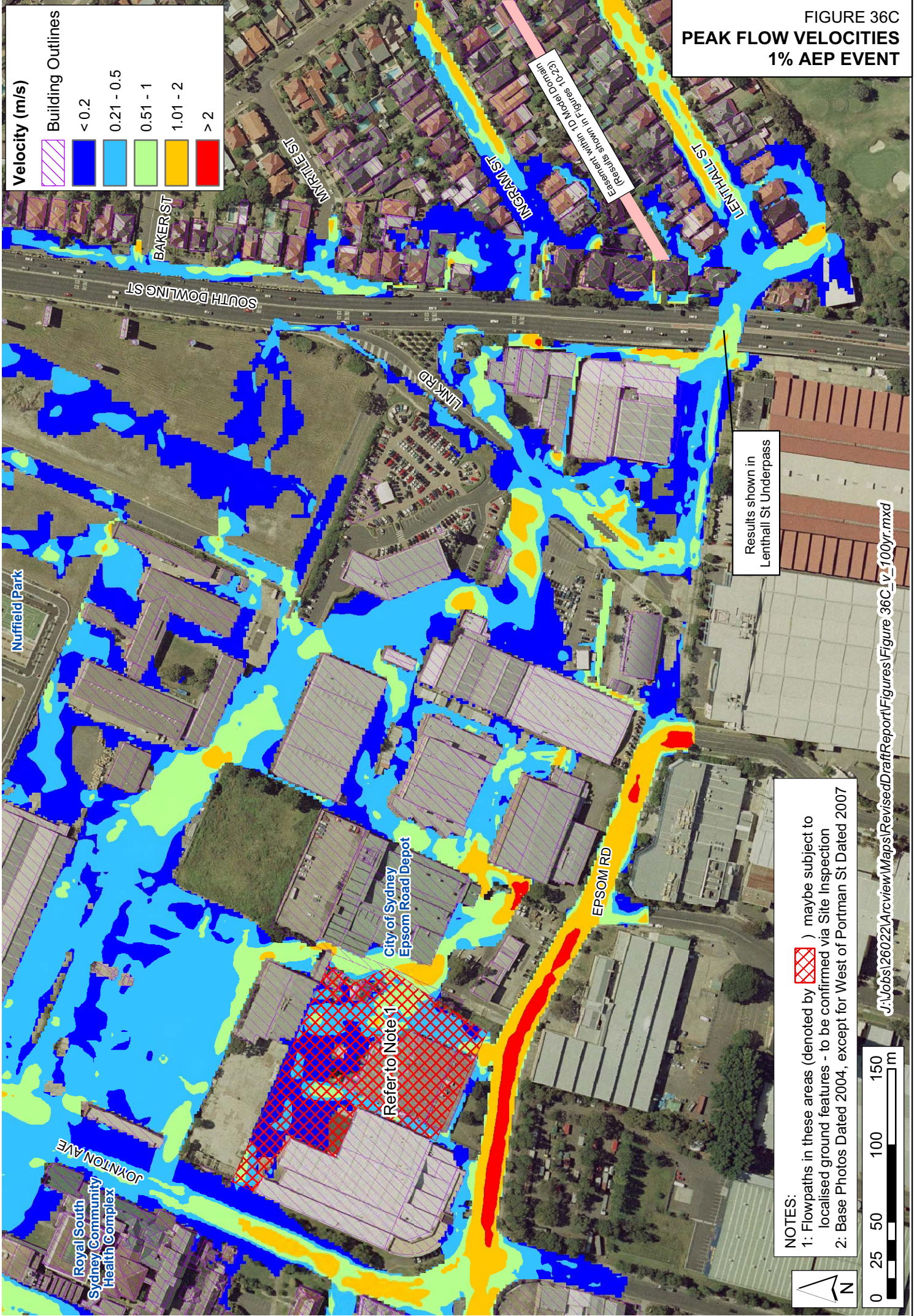


Velocity (m/s)

	Building Outlines
	<math>< 0.25</math>
	0.26 - 0.50
	0.51 - 1.00
	1.01 - 2.00
	> 2

NOTES:
 1: Flowpaths in these areas (denoted by) may be subject to localised ground features - to be confirmed via Site Inspection
 2: Base Photos Dated 2004, except for West of Portman St Dated 2007


FIGURE 36C
PEAK FLOW VELOCITIES
1% AEP EVENT



Velocity (m/s)

	Building Outlines
	< 0.2
	0.21 - 0.5
	0.51 - 1
	1.01 - 2
	> 2

Results shown in
 Lenthall St Underpass

NOTES:
 1: Flowpaths in these areas (denoted by ) maybe subject to localised ground features - to be confirmed via Site Inspection
 2: Base Photos Dated 2004, except for West of Portman St Dated 2007



