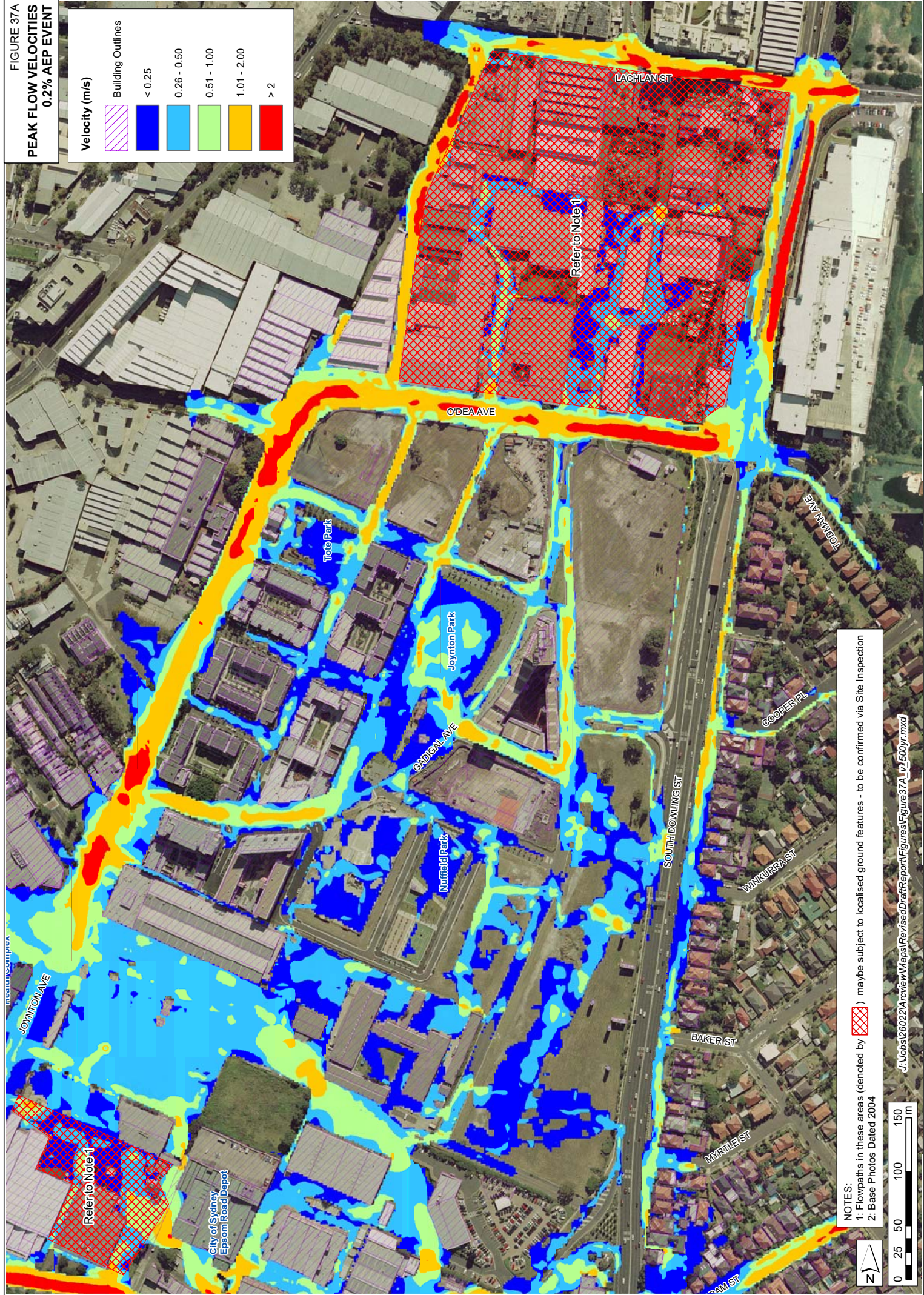
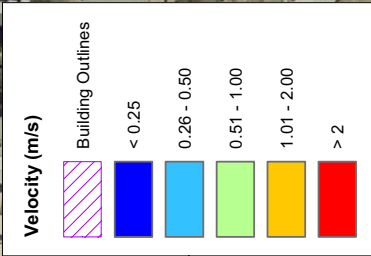


FIGURE 37A

PEAK FLOW VELOCITIES  
0.2% AEP EVENT



NOTES:  
 1: Flowpaths in these areas (denoted by ) may be subject to localised ground features - to be confirmed via Site Inspection  
 2: Base Photos Dated 2004

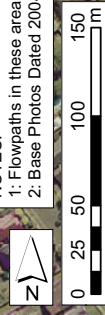
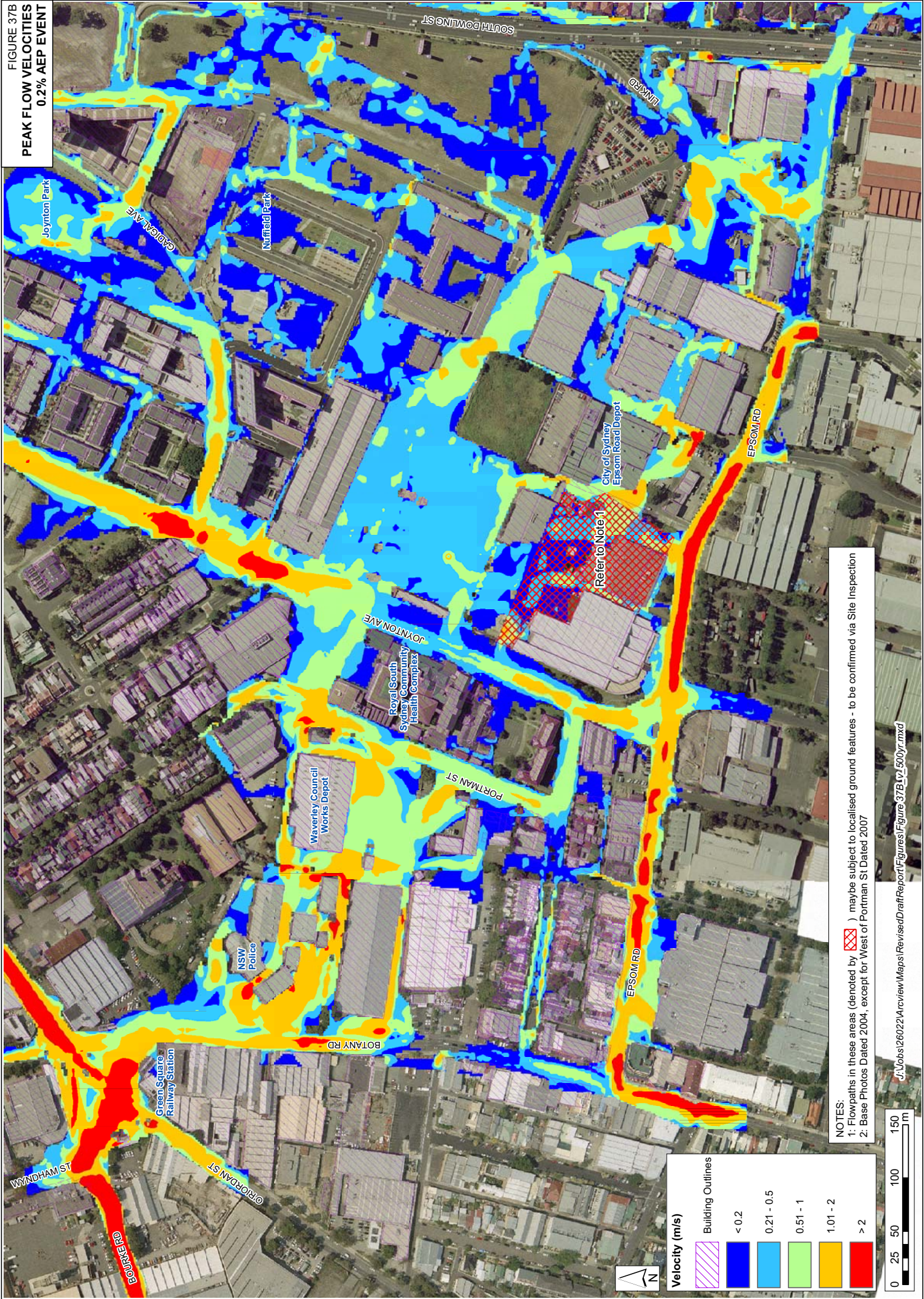








FIGURE 37B  
PEAK FLOW VELOCITIES  
0.2% AEP EVENT



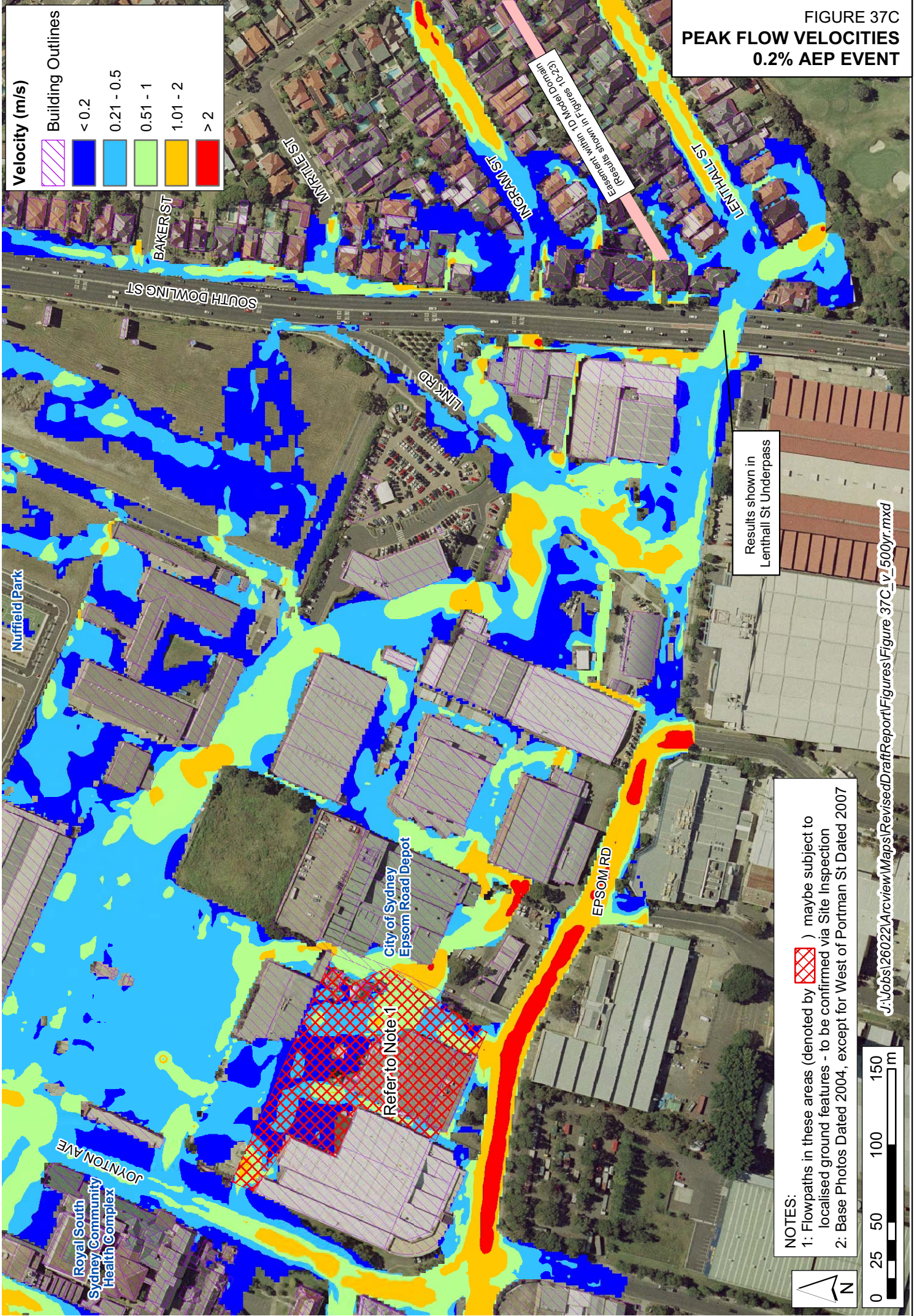
NOTES:  
 1: Flowpaths in these areas (denoted by ) may be subject to localised ground features - to be confirmed via Site Inspection  
 2: Base Photos Dated 2004, except for West of Portman St Dated 2007

**Velocity (m/s)**

	Building Outlines
	<math>< 0.2</math>
	0.21 - 0.5
	0.51 - 1
	1.01 - 2
	> 2



**FIGURE 37C  
PEAK FLOW VELOCITIES  
0.2% AEP EVENT**



Velocity (m/s)	Building Outlines
< 0.2	
0.21 - 0.5	
0.51 - 1	
1.01 - 2	
> 2	

**NOTES:**  
 1: Flowpaths in these areas (denoted by ) maybe subject to localised ground features - to be confirmed via Site Inspection  
 2: Base Photos Dated 2004, except for West of Portman St Dated 2007

Results shown in Lenthall St Underpass

Refer to Note 1

City of Sydney Epsom Road Depot

EPSOM RD

LINK RD

SOUTH DOWLING ST

INGRAM ST

LENTHALL ST

BAKER ST

MARPLE ST

JOYNTON AVE

Royal South Sydney Community Health Complex

Nuffield Park

Results shown in Lenthall St Underpass

Results shown in Lenthall St Underpass

Results shown in Lenthall St Underpass

Results shown in Lenthall St Underpass

Results shown in Lenthall St Underpass

Results shown in Lenthall St Underpass

Results shown in Lenthall St Underpass

Results shown in Lenthall St Underpass

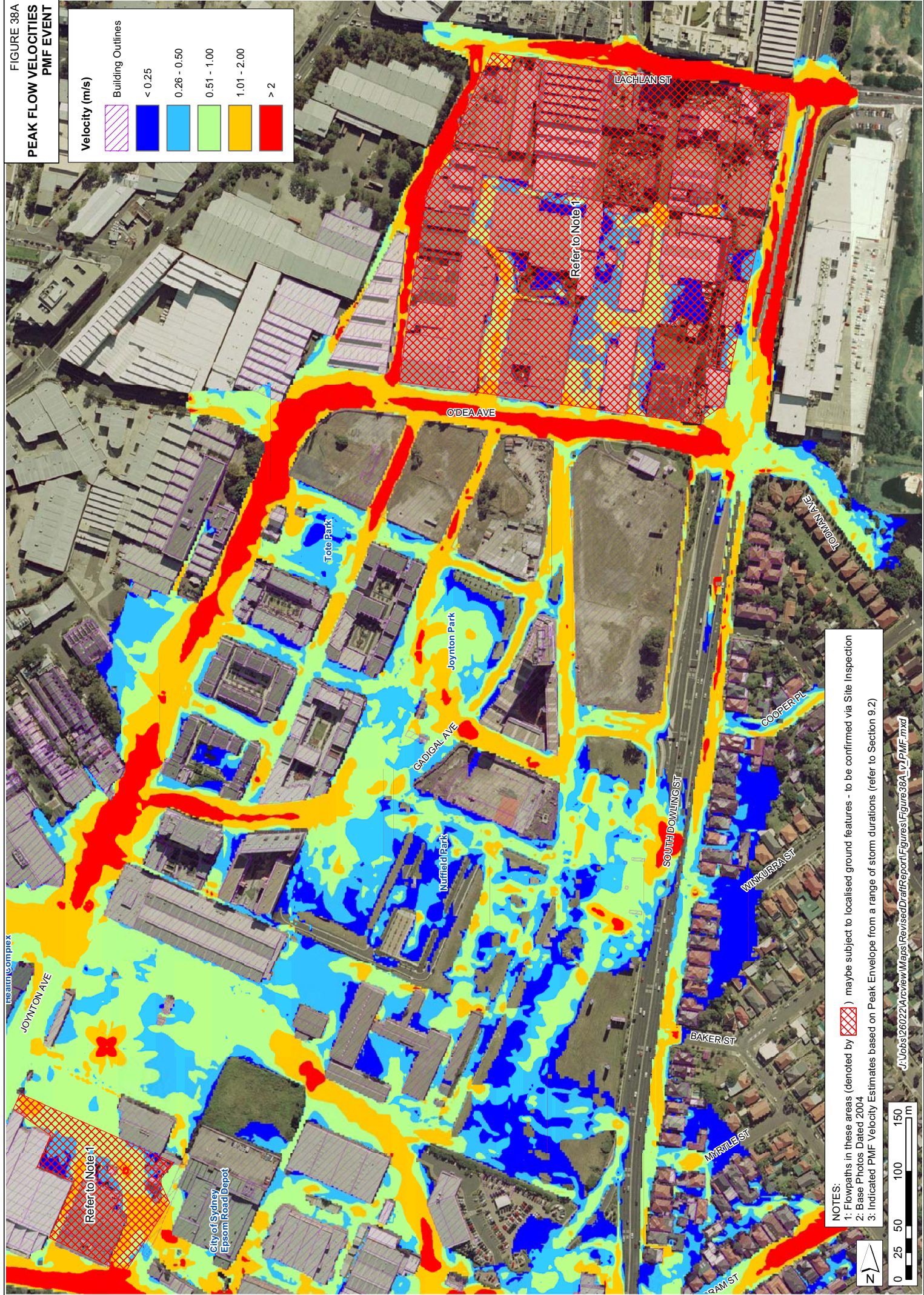
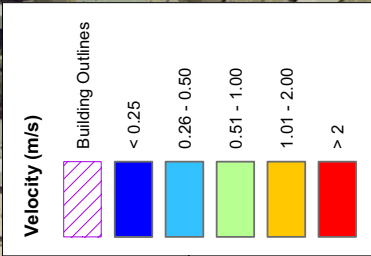
Results shown in Lenthall St Underpass

Results shown in Lenthall St Underpass



FIGURE 38A

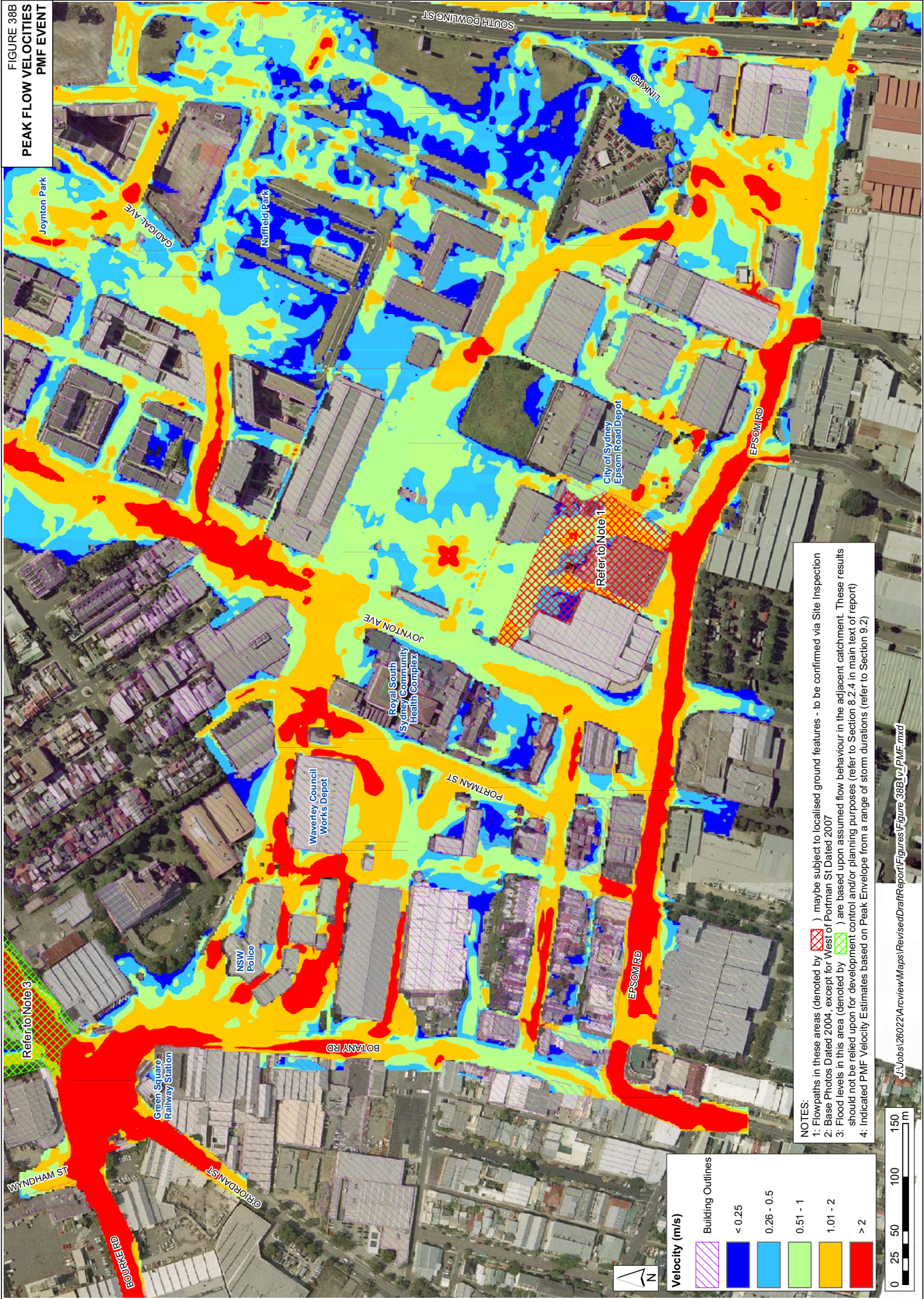
PEAK FLOW VELOCITIES  
PMF EVENT

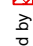



NOTES:  
 1: Flowpaths in these areas (denoted by ) may be subject to localised ground features - to be confirmed via Site Inspection  
 2: Base Photos Dated 2004  
 3: Indicated PMF Velocity Estimates based on Peak Envelope from a range of storm durations (refer to Section 9.2)



FIGURE 38B  
PEAK FLOW VELOCITIES  
PMF EVENT



- NOTES:
- 1: Flowpaths in these areas (denoted by ) , maybe subject to localised ground features - to be confirmed via Site Inspection
  - 2: Base Photos Dated 2004, except for West of Portman St Dated 2007
  - 3: Flood levels in this area (denoted by ) are based upon assumed flow behaviour in the adjacent catchment. These results should not be relied upon for development control and/or planning purposes (refer to Section 8.2.4 in main text of report)
  - 4: Indicated PMF Velocity Estimates based on Peak Envelope from a range of storm durations (refer to Section 9.2)

**Velocity (m/s)**







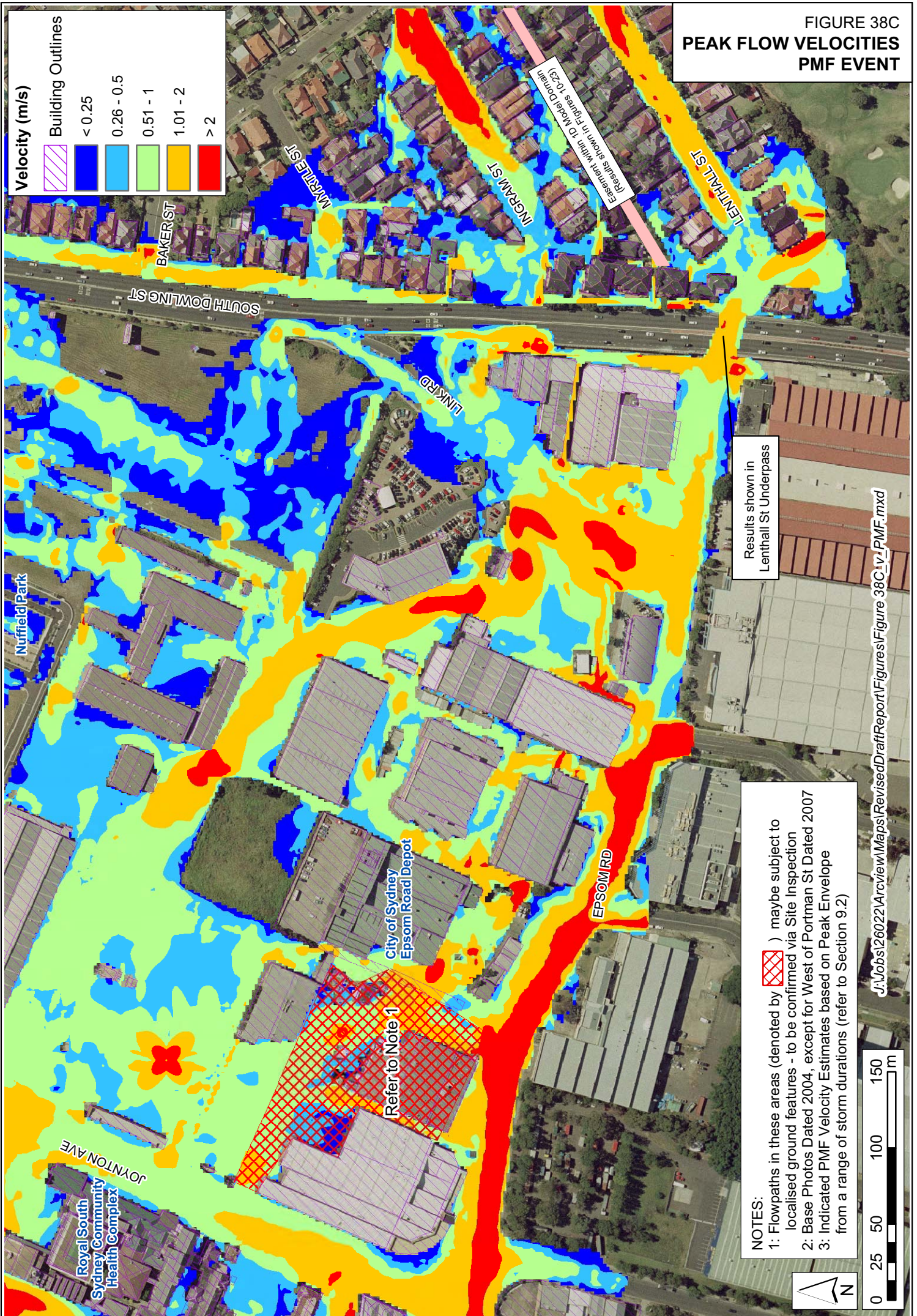
	Building Outlines
	< 0.25
	0.26 - 0.5
	0.51 - 1
	1.01 - 2
	> 2

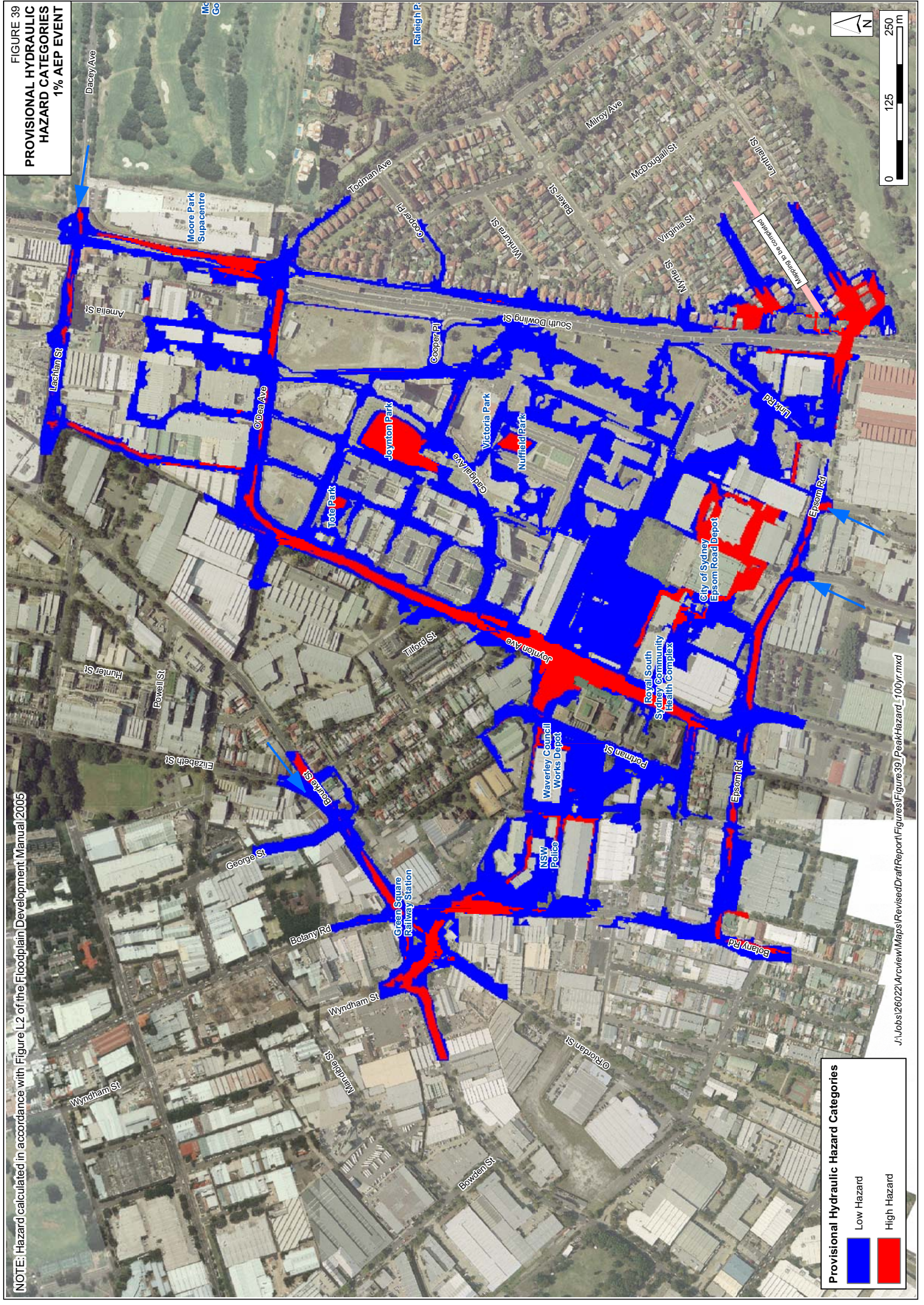
FIGURE 38C  
PEAK FLOW VELOCITIES  
PMF EVENT



NOTES:

- 1: Flowpaths in these areas (denoted by ) maybe subject to localised ground features - to be confirmed via Site Inspection
- 2: Base Photos Dated 2004, except for West of Portman St Dated 2007
- 3: Indicated PMF Velocity Estimates based on Peak Envelope from a range of storm durations (refer to Section 9.2)

FIGURE 39  
PROVISIONAL HYDRAULIC  
HAZARD CATEGORIES  
1% AEP EVENT



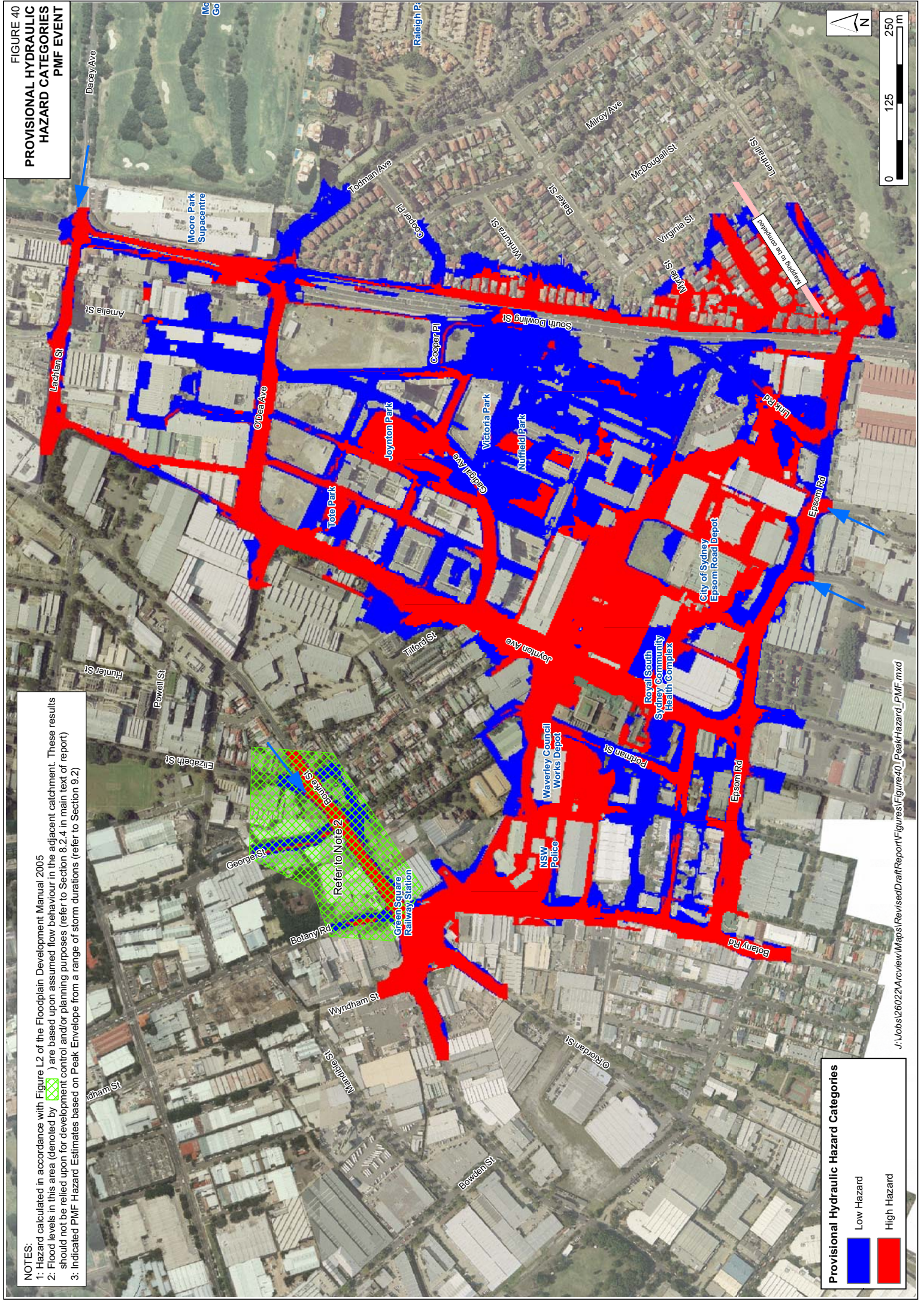
NOTE: Hazard calculated in accordance with Figure L2 of the Floodplain Development Manual 2005

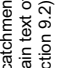
J:\Jobs\26022\Review\Maps\Revised Draft Report\Figures\Figure 39\_Peak Hazard\_100yr.mxd

**Provisional Hydraulic Hazard Categories**

	Low Hazard
	High Hazard

FIGURE 40  
**PROVISIONAL HYDRAULIC  
 HAZARD CATEGORIES  
 PMF EVENT**



**NOTES:**  
 1: Hazard calculated in accordance with Figure L2 of the Floodplain Development Manual 2005  
 2: Flood levels in this area (denoted by ) are based upon assumed flow behaviour in the adjacent catchment. These results should not be relied upon for development control and/or planning purposes (refer to Section 8.2.4 in main text of report)  
 3: Indicated PMF Hazard Estimates based on Peak Envelope from a range of storm durations (refer to Section 9.2)

**Provisional Hydraulic Hazard Categories**

	Low Hazard
	High Hazard

