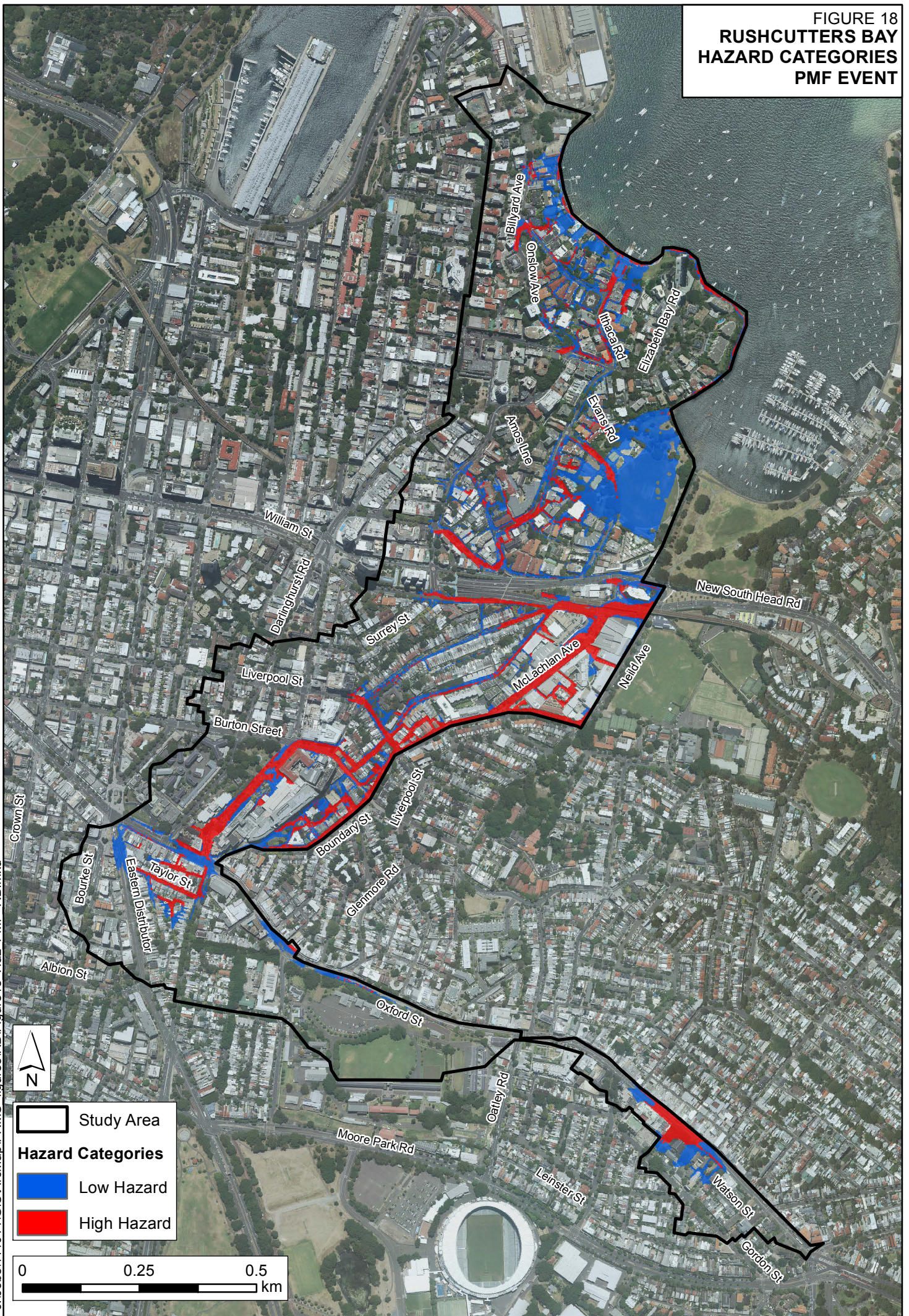


FIGURE 18  
**RUSHCUTTERS BAY**  
**HAZARD CATEGORIES**  
**PMF EVENT**



J:\Jobs\114014\GIS\ArcMap\FRMS figures\RB\Figure18\_Haz\_PMF\_RB.mxd

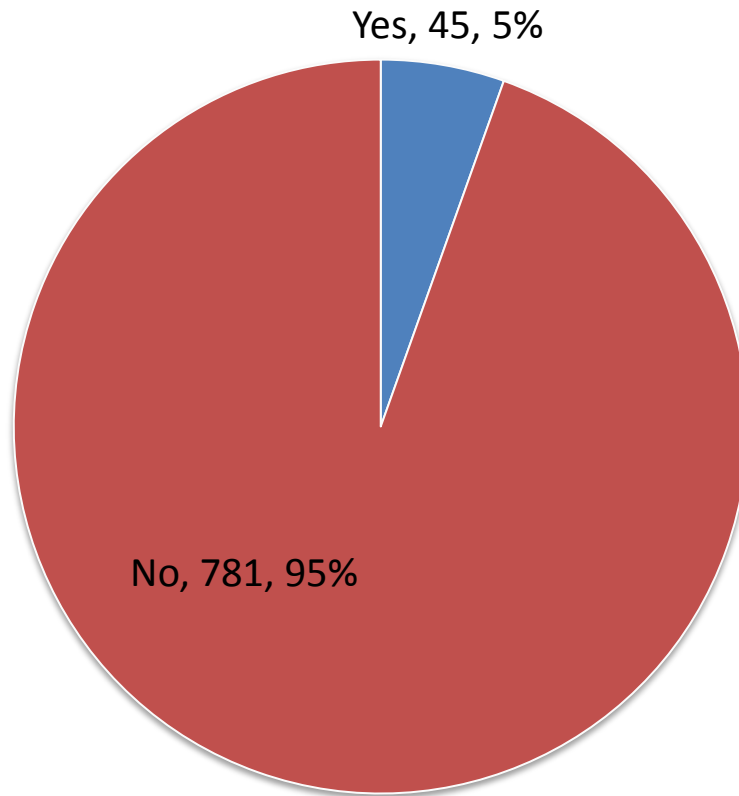
### RUSHCUTTERS BAY DURATION OF INUNDATION 1% AEP EVENT

Note: Durations shown on this figure are for a 1% AEP design event duration of 1 hour. Duration of inundation will vary with other event durations.

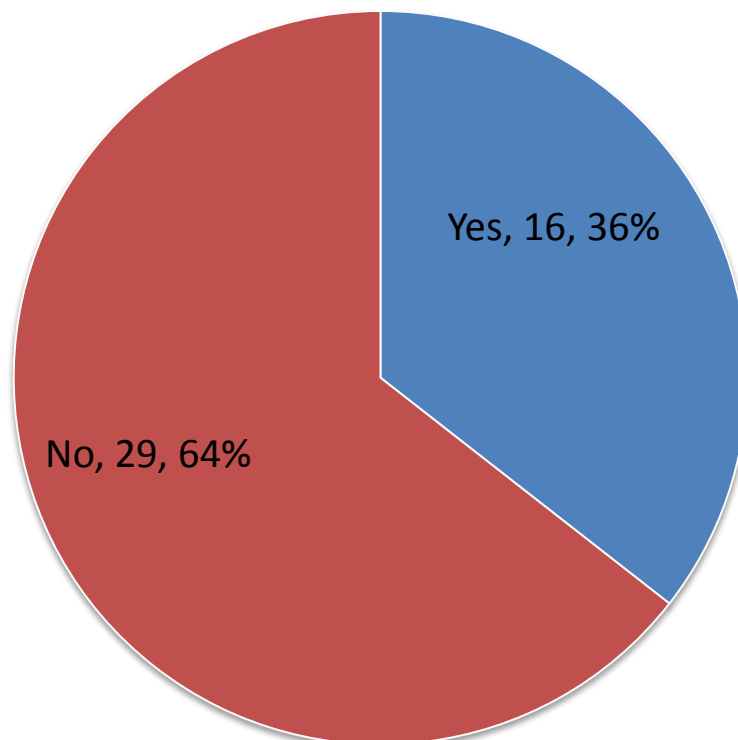


J:\Jobs\114014\GIS\ArcMap\FRMS\_figures\RB\Figure19\_RB\_duration.mxd

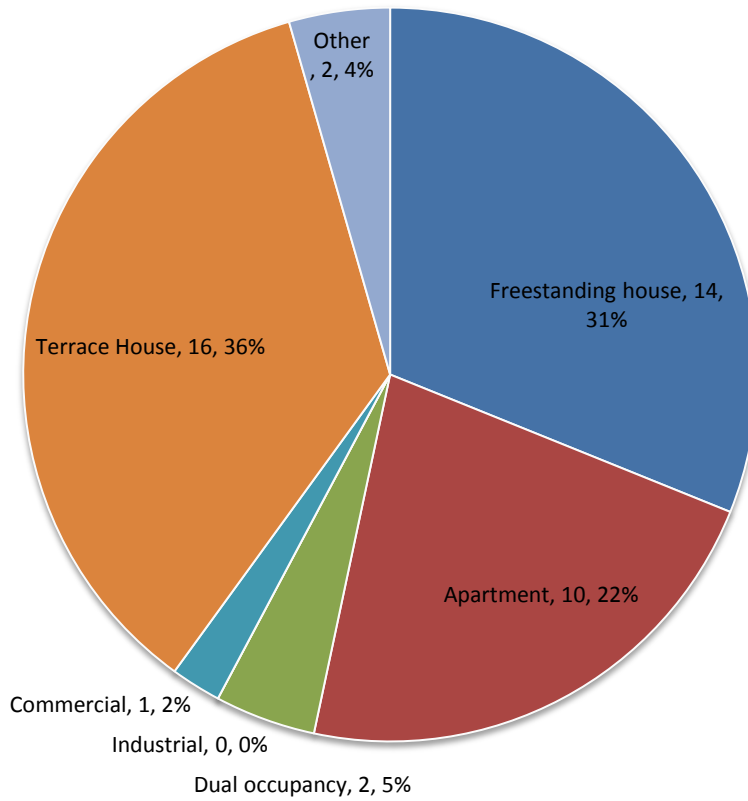
### A: Number of Respondents



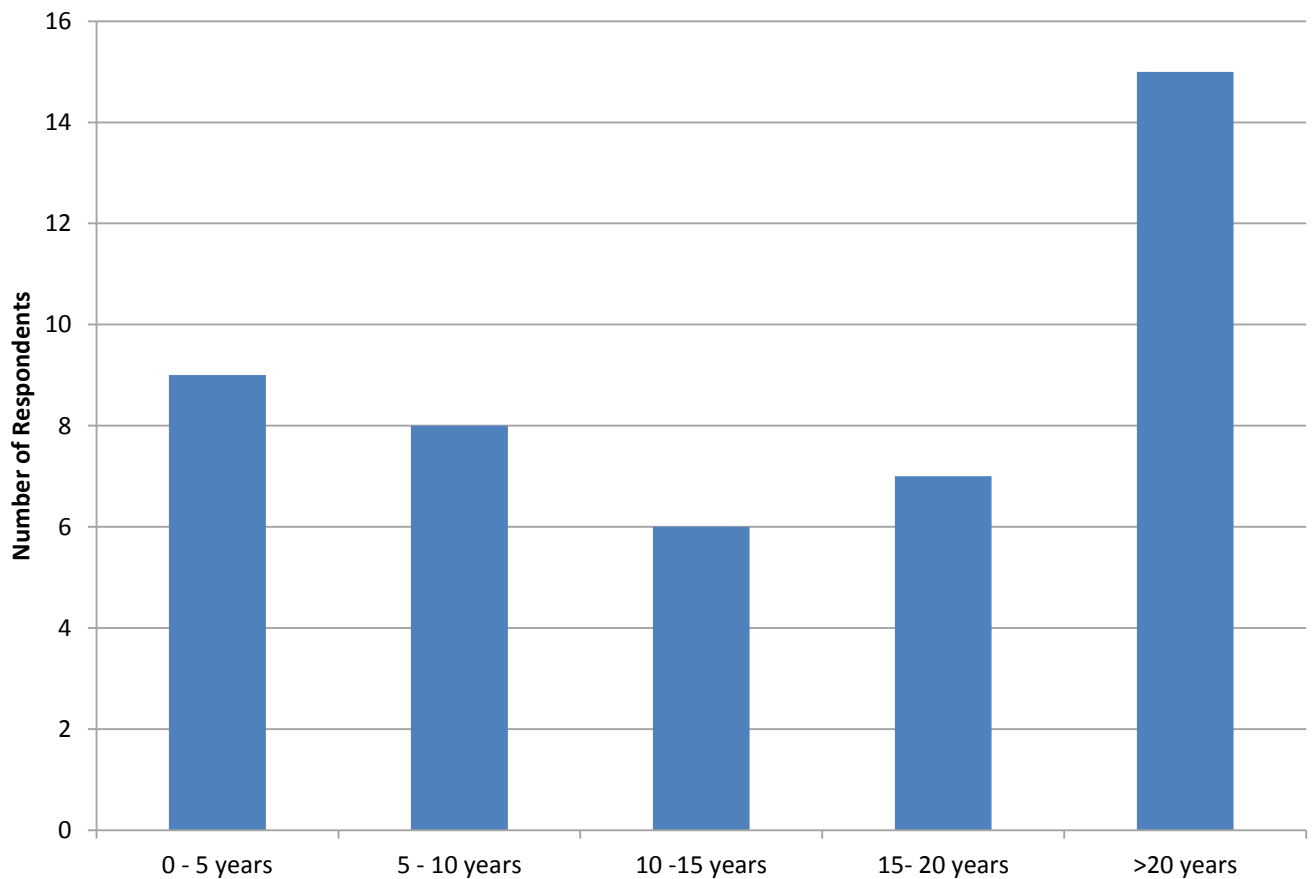
### B: Experienced Flooding



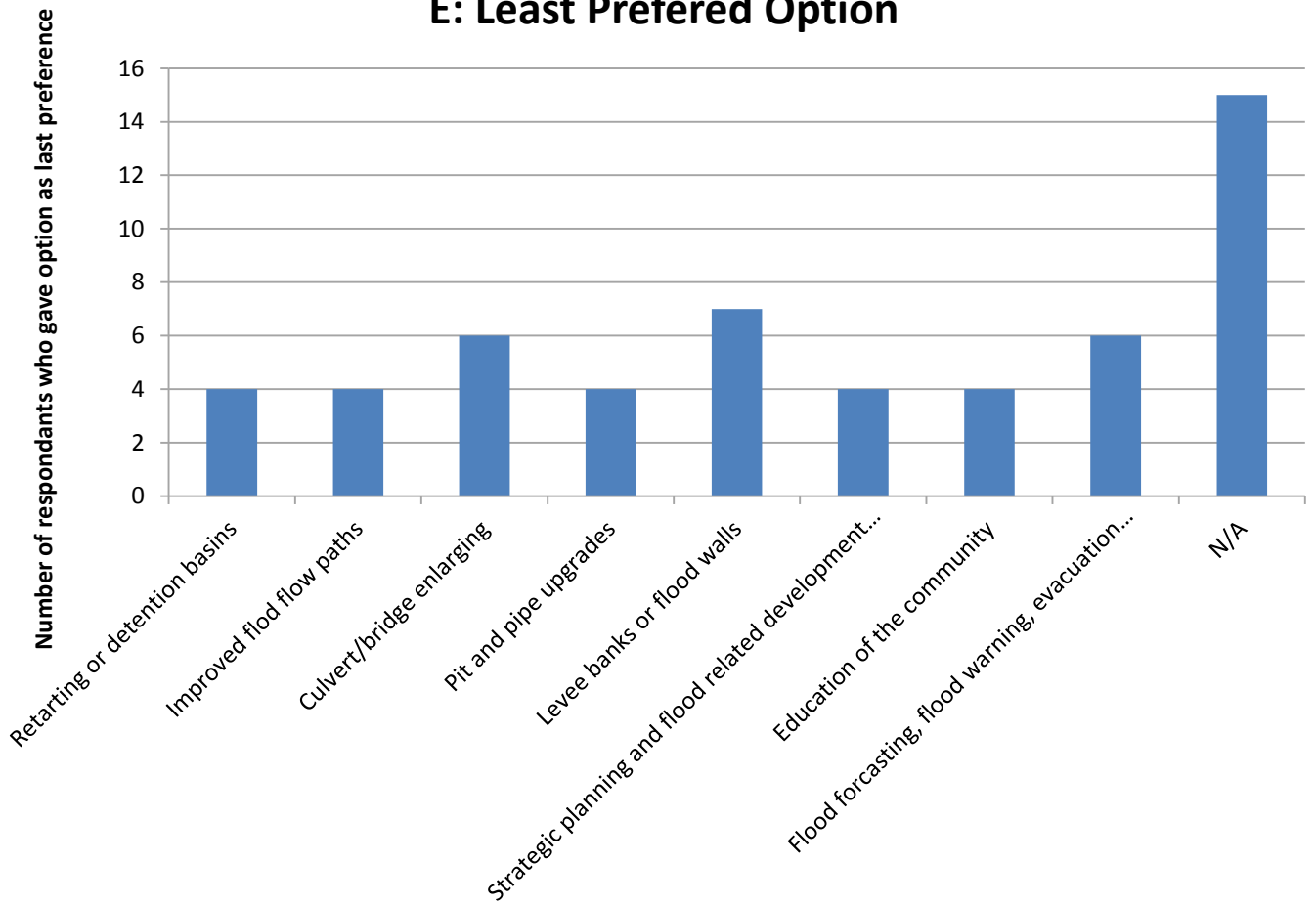
### C: Property Type



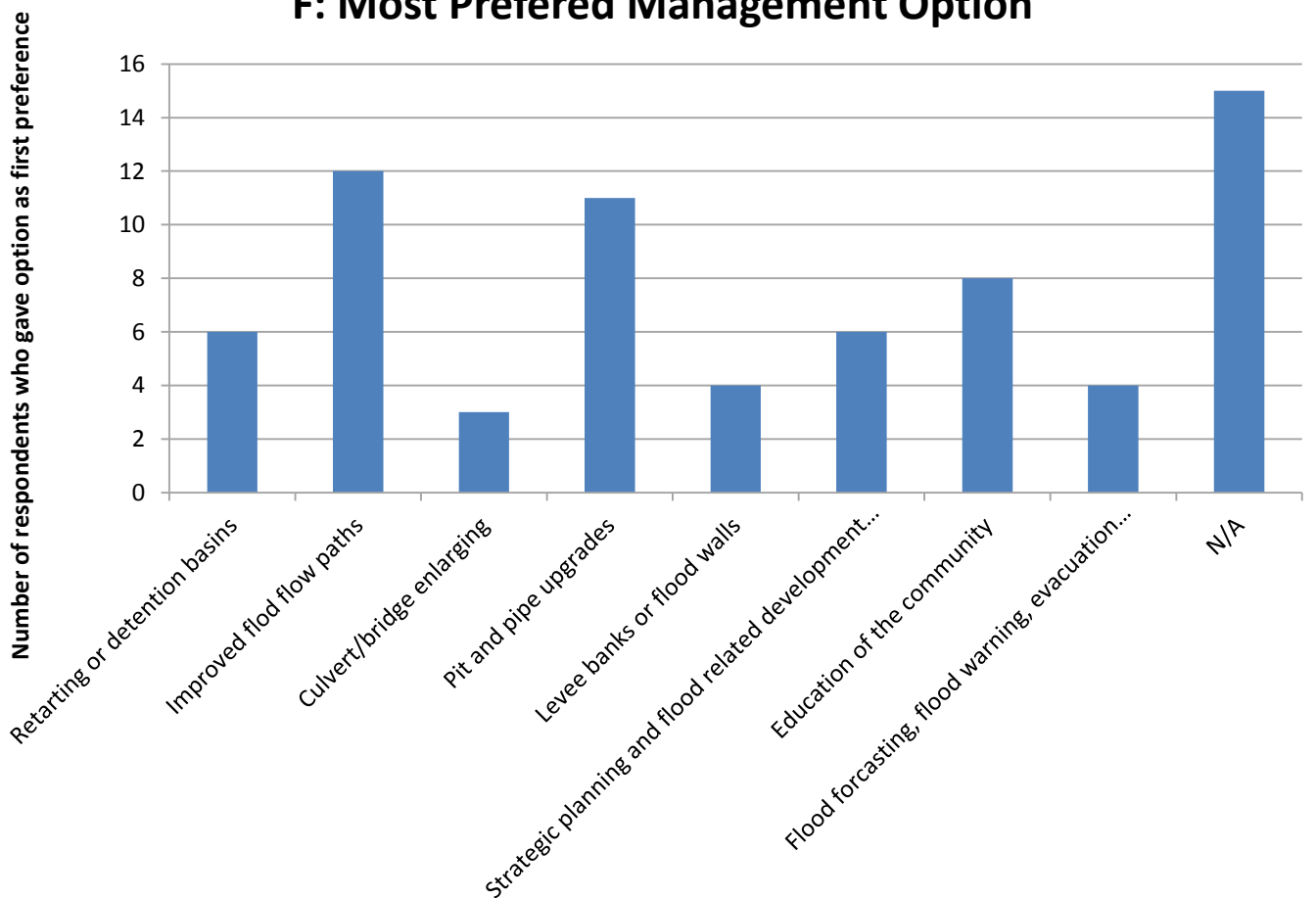
### D: Period of Living/Working/Owning Property



**E: Least Preferred Option**



**F: Most Preferred Management Option**



### G: Location of Flooding Experienced

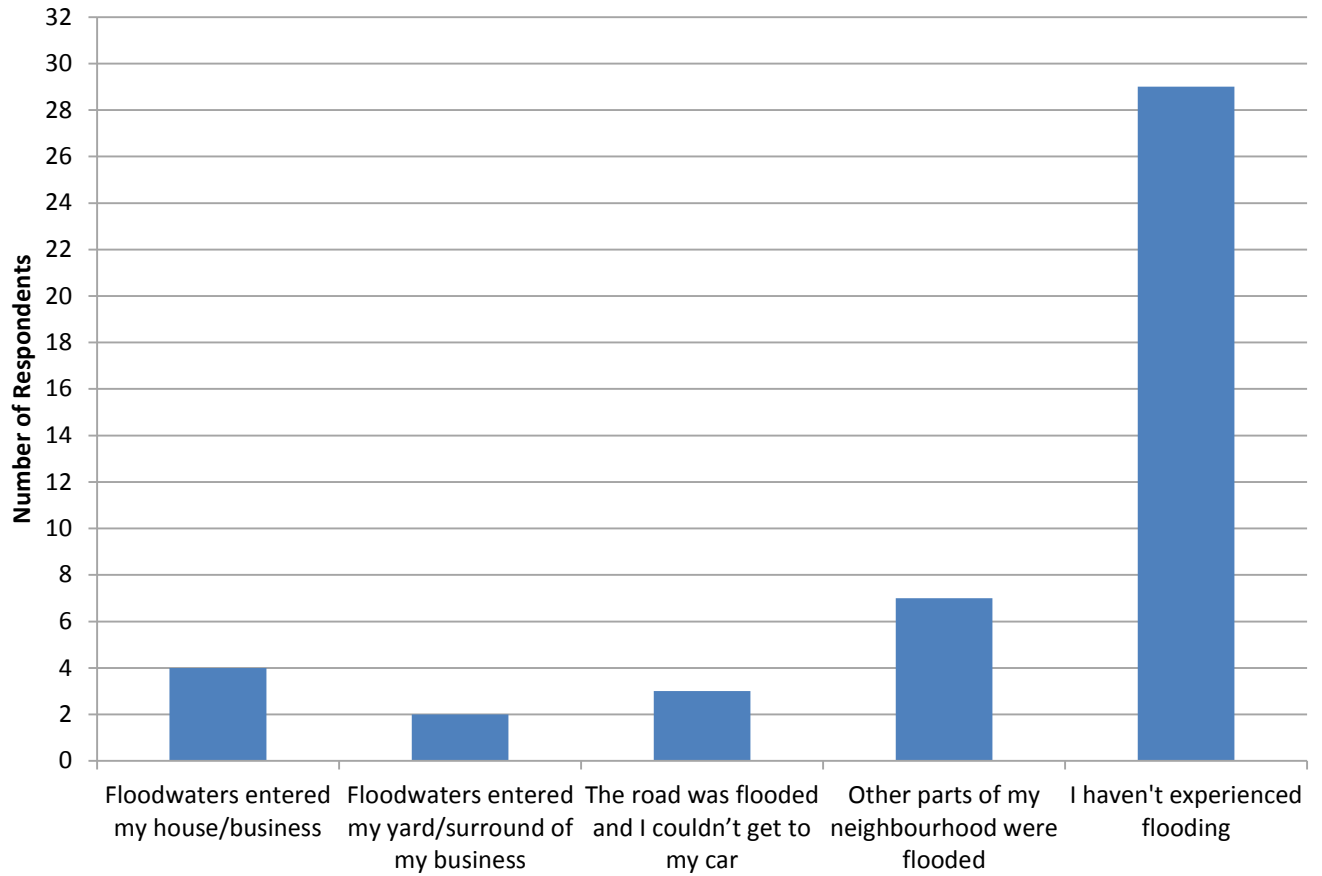


FIGURE 21  
RUSHCUTTERS BAY  
OVER FLOOR FLOOD LIABILITY

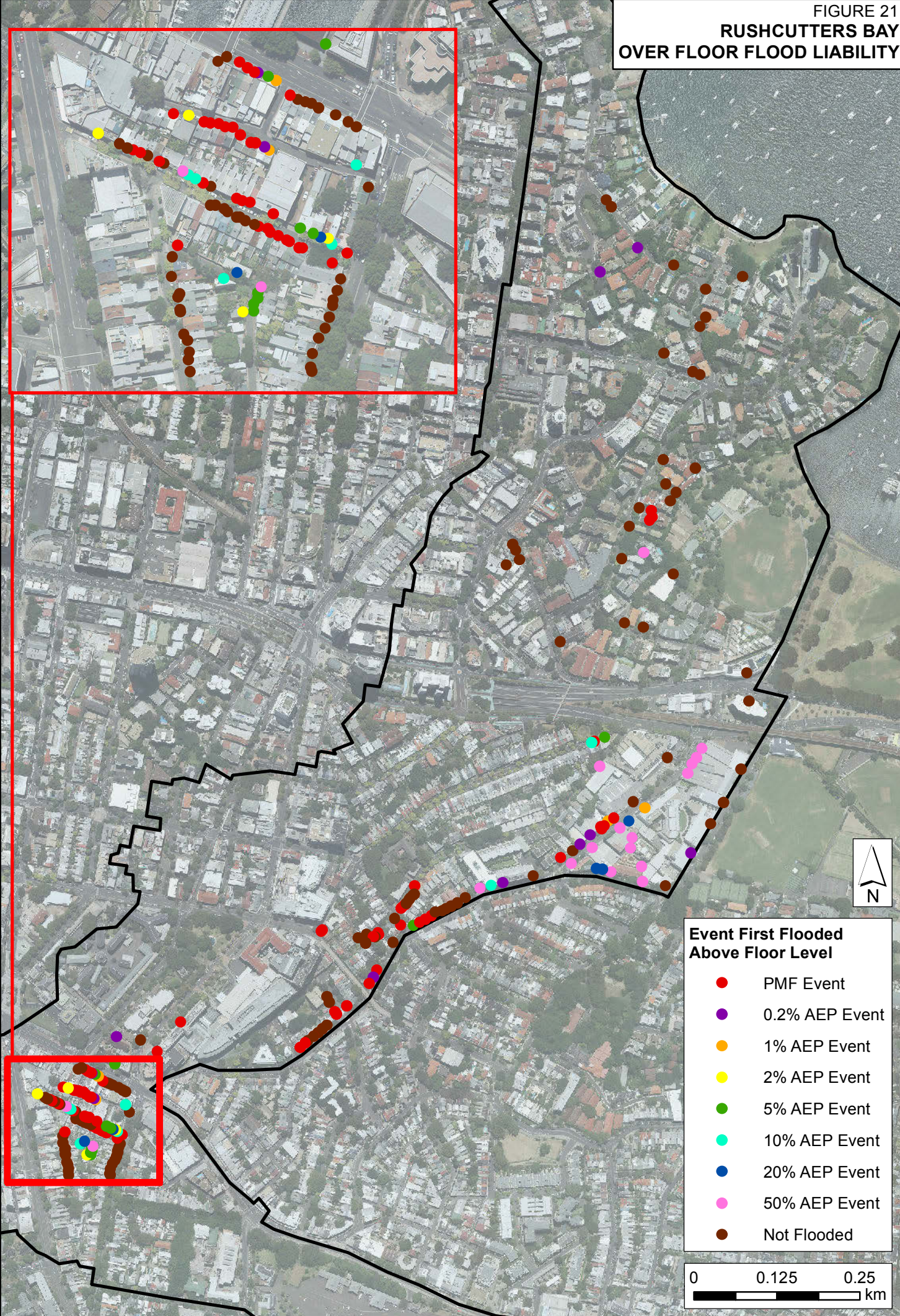
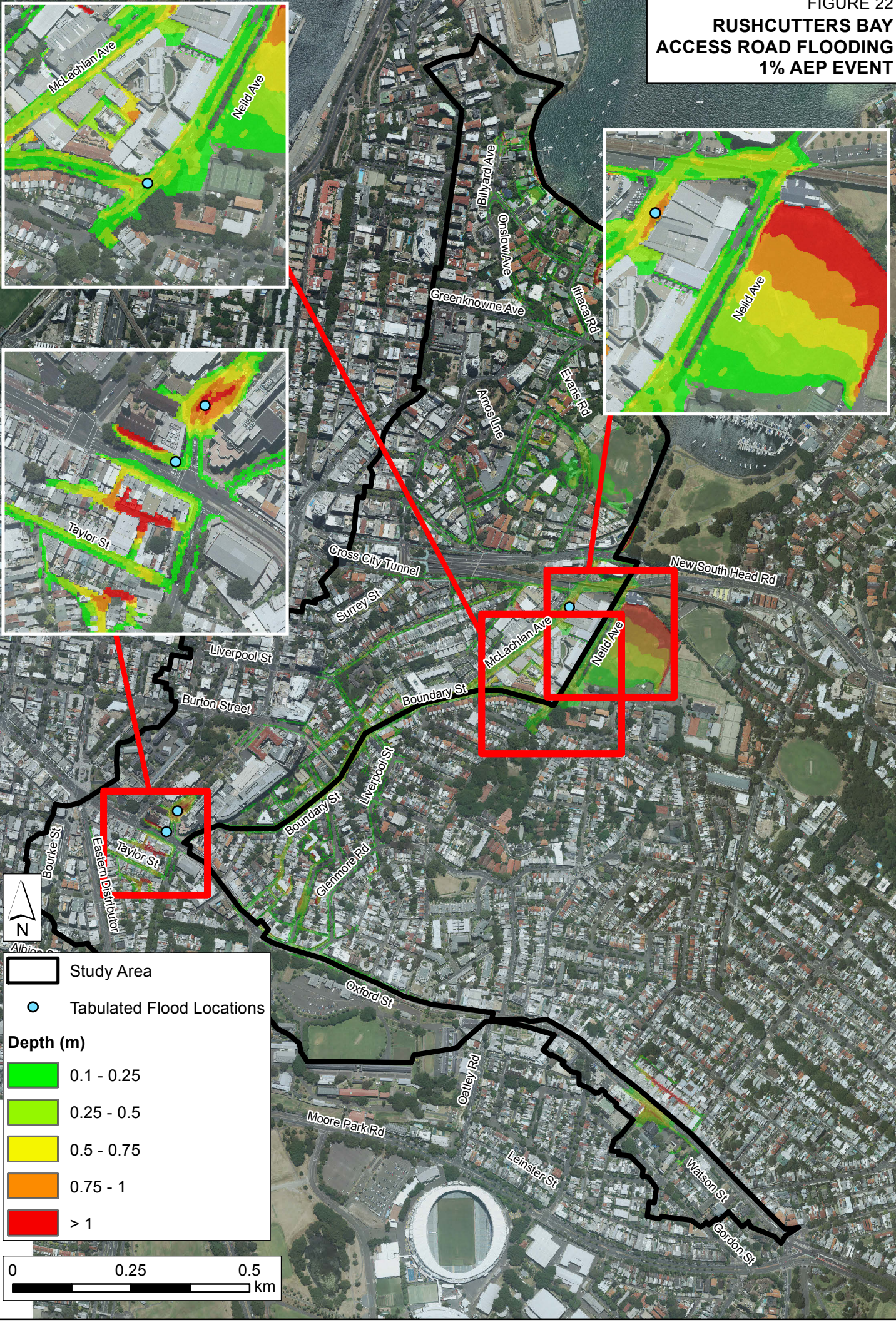


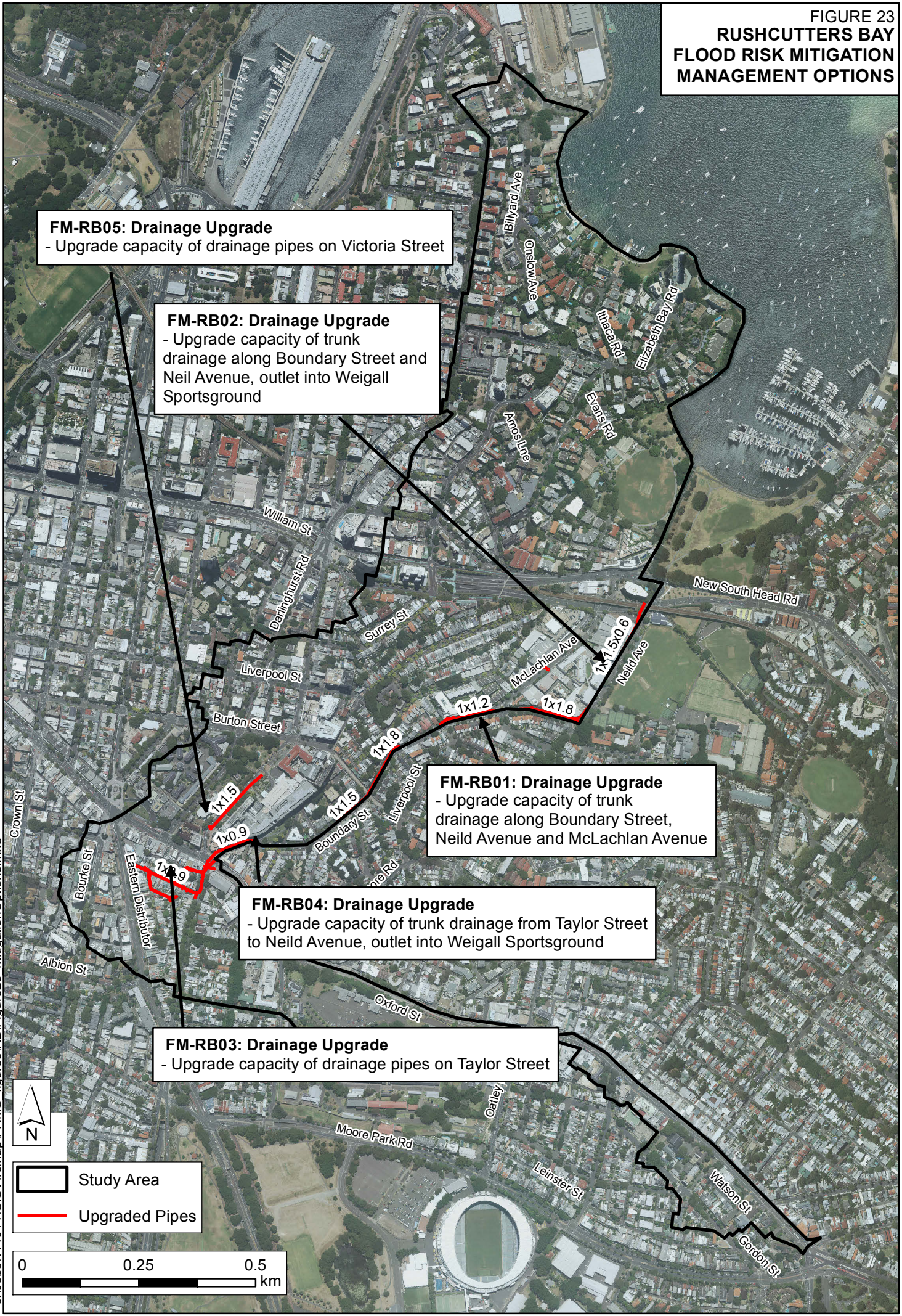
FIGURE 22  
**RUSHCUTTERS BAY  
 ACCESS ROAD FLOODING  
 1% AEP EVENT**



J:\Jobs\114014\GIS\ArcMap\FRMS\_figures\RB\Figure22\_Access\_Road\_Flooding\_RB.mxd



FIGURE 23  
**RUSHCUTTERS BAY  
 FLOOD RISK MITIGATION  
 MANAGEMENT OPTIONS**



**FM-RB05: Drainage Upgrade**  
 - Upgrade capacity of drainage pipes on Victoria Street

**FM-RB02: Drainage Upgrade**  
 - Upgrade capacity of trunk drainage along Boundary Street and Neil Avenue, outlet into Weigall Sportsground

**FM-RB01: Drainage Upgrade**  
 - Upgrade capacity of trunk drainage along Boundary Street, Neil Avenue and McLachlan Avenue

**FM-RB04: Drainage Upgrade**  
 - Upgrade capacity of trunk drainage from Taylor Street to Neil Avenue, outlet into Weigall Sportsground

**FM-RB03: Drainage Upgrade**  
 - Upgrade capacity of drainage pipes on Taylor Street

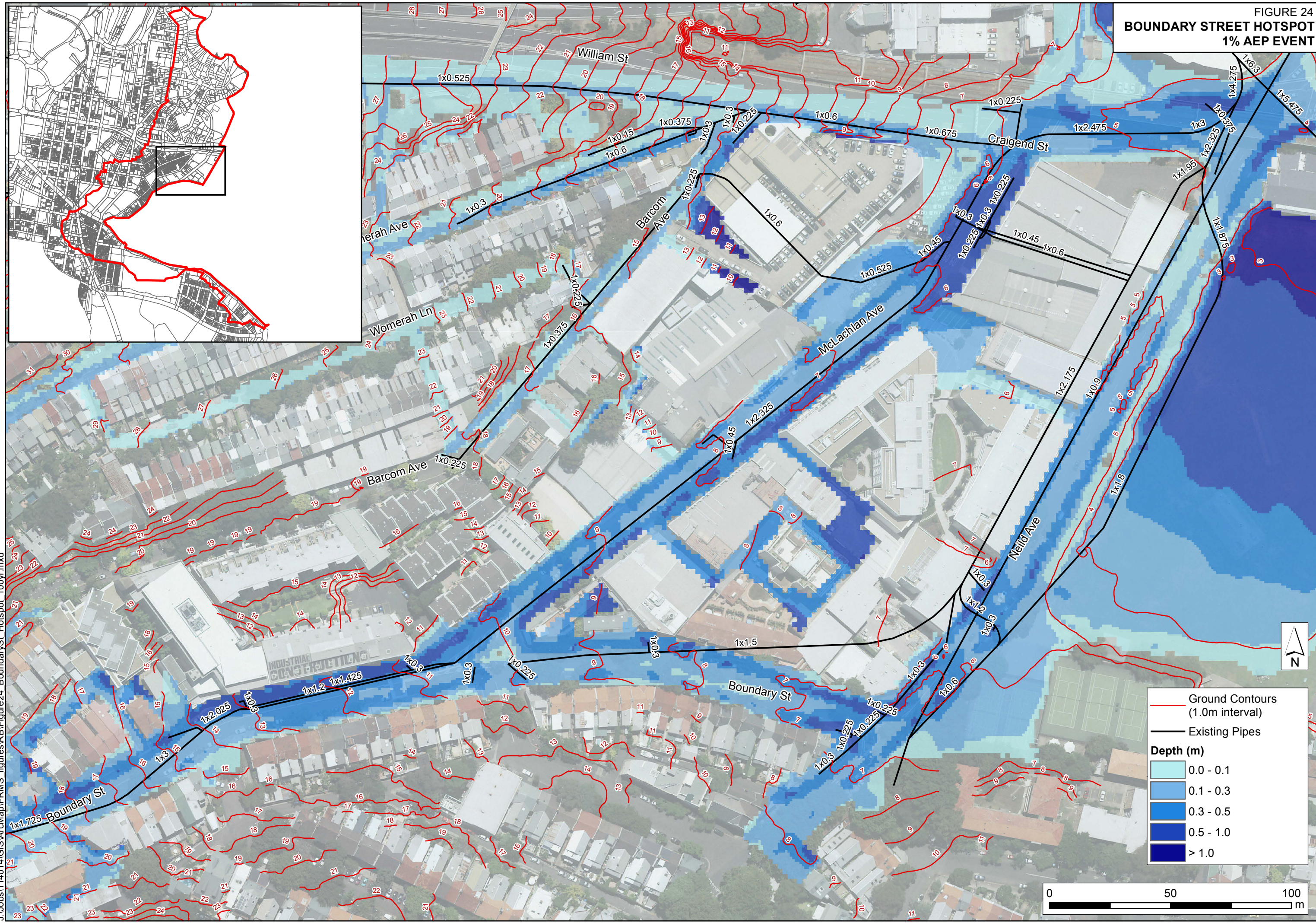


Study Area  
 Upgraded Pipes

0 0.25 0.5 km

J:\Jobs\114014\GIS\ArcMap\FRMS\_figures\RB\Figure23\_MitigationOptions.mxd

FIGURE 24  
**BOUNDARY STREET HOTSPOT**  
**1% AEP EVENT**



— Ground Contours  
 (1.0m interval)

— Existing Pipes

**Depth (m)**

Lightest Blue	0.0 - 0.1
Light Blue	0.1 - 0.3
Medium Blue	0.3 - 0.5
Dark Blue	0.5 - 1.0
Very Dark Blue	> 1.0

J:\Jobs\114014\GIS\ArcMap\FRMS\_figures\RB\Figure24\_BoundarySt\_Hotspot\_100yr.mxd

FIGURE 25  
**OPTION FM - RB01**  
**10% AEP EVENT FLOOD IMPACT**



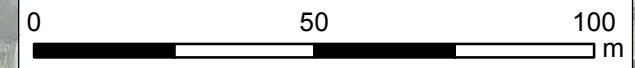
**Event First Flooded Above Floor Level**

- PMF Event
- 0.2% AEP Event
- 1% AEP Event
- 2% AEP Event
- 5% AEP Event
- 10% AEP Event
- 20% AEP Event
- 50% AEP Event
- Not Flooded
- No Longer Flooded Above Floor Level in 10% AEP

— Upgraded Pipes

**Impact (m)**

- -0.42 - -0.3
- -0.3 - -0.2
- -0.2 - -0.1
- -0.1 - -0.05
- -0.05 - -0.01
- Minimal Impact
- 0.01 - 0.05
- 0.05 - 0.1
- 0.1 - 0.2
- 0.2 - 0.36
- No Longer Flooded
- Newly Flooded

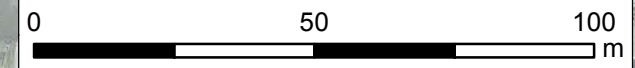


J:\Jobs\1140\14\GIS\ArcMap\FRMS\_figures\RB\Figure25 OptionFM\_RB01\_Flood\_Impact.mxd

FIGURE 26  
**OPTION FM - RB01**  
**10% AEP EVENT HAZARD IMPACT**

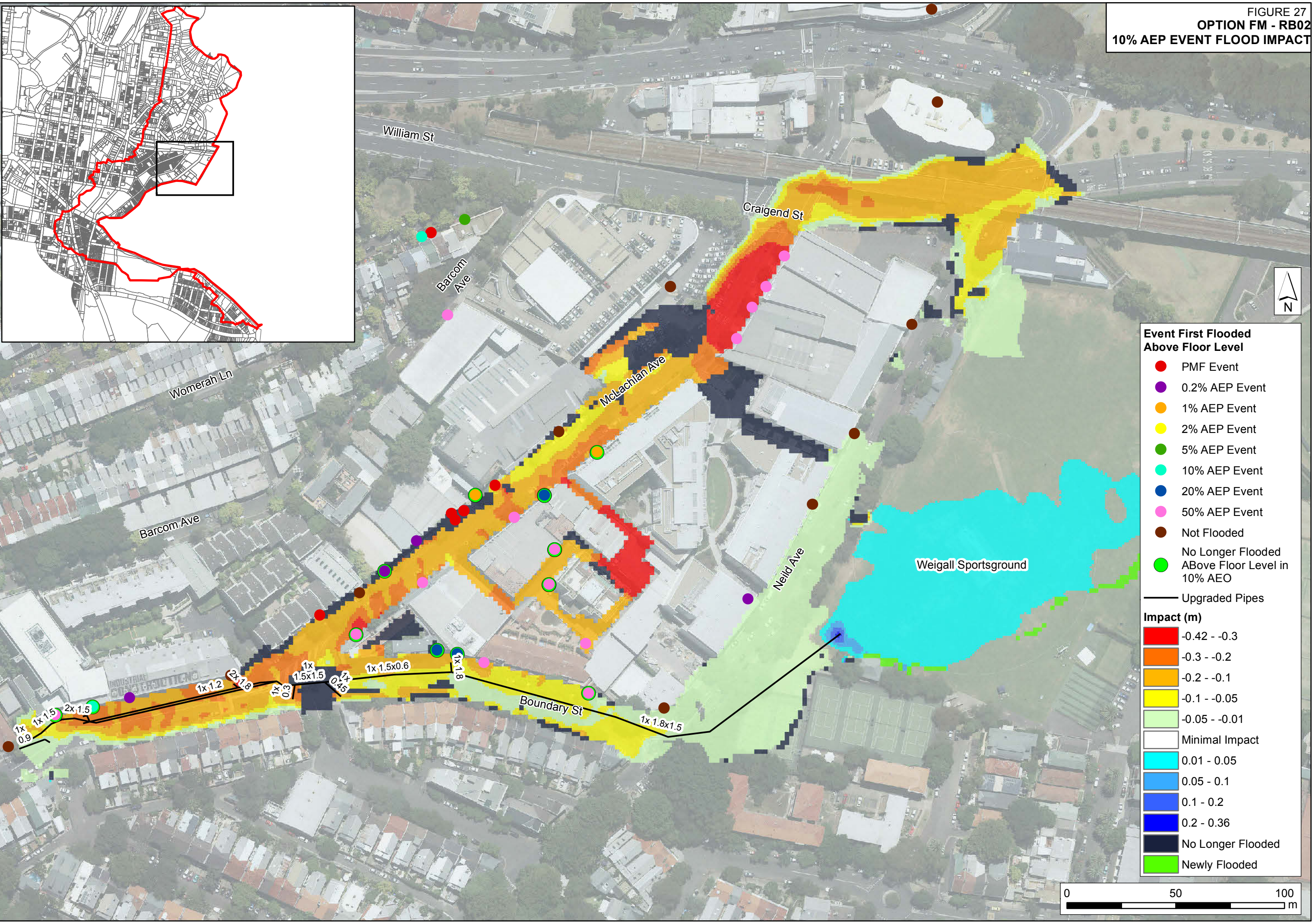
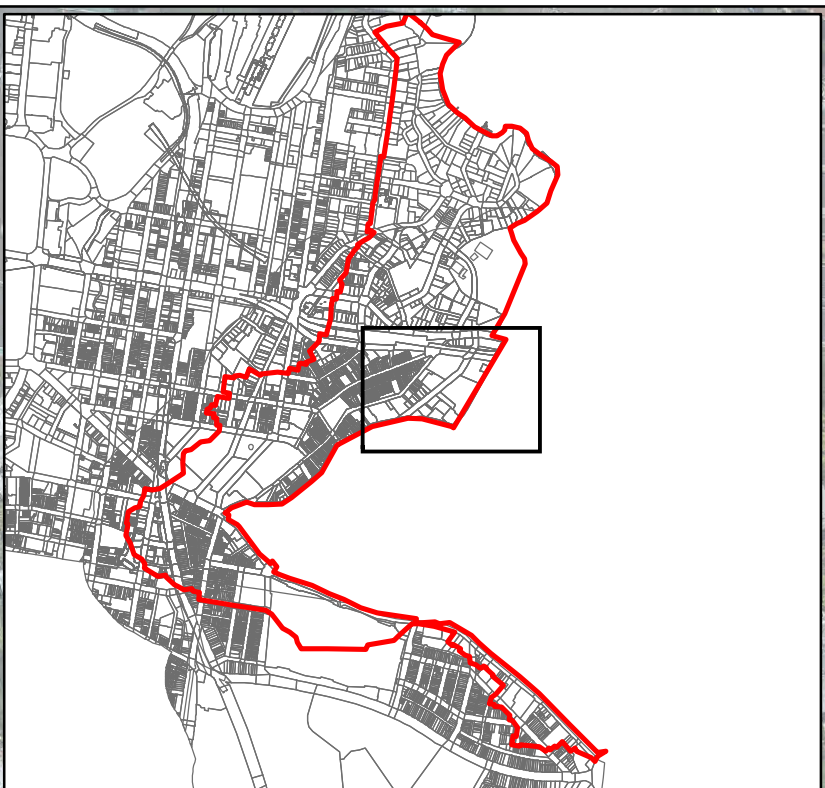


- Event First Flooded Above Floor Level**
- PMF Event
  - 0.2% AEP Event
  - 1% AEP Event
  - 2% AEP Event
  - 5% AEP Event
  - 10% AEP Event
  - 20% AEP Event
  - 50% AEP Event
  - Not Flooded
  - No Longer Flooded Above Floor Level in 10% AEP
- Upgraded Pipes
- Newly High Hazard (Prev. Low Hazard)
  - Low Hazard (Unchanged)
  - High Hazard (Unchanged)
  - Newly Low Hazard (Prev. High Hazard)



J:\Jobs\1140\14\GIS\ArcMap\FRMS\_figures\RB\Figure26 OptionFM\_RB01\_Hazard\_Impact.mxd

FIGURE 27  
**OPTION FM - RB02**  
**10% AEP EVENT FLOOD IMPACT**



**Event First Flooded Above Floor Level**

- PMF Event
- 0.2% AEP Event
- 1% AEP Event
- 2% AEP Event
- 5% AEP Event
- 10% AEP Event
- 20% AEP Event
- 50% AEP Event
- Not Flooded
- No Longer Flooded Above Floor Level in 10% AEO

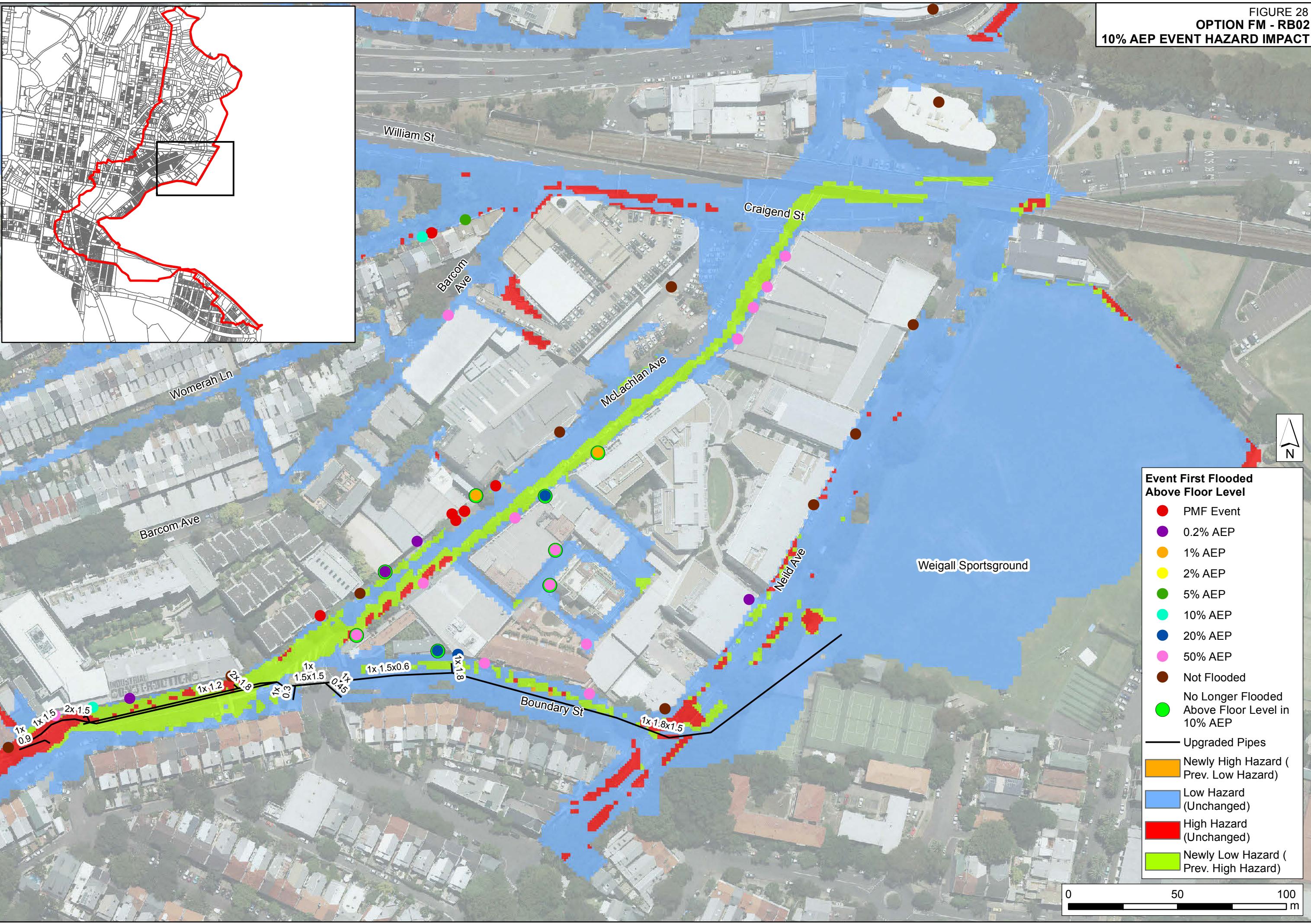
— Upgraded Pipes

**Impact (m)**

- -0.42 - -0.3
- -0.3 - -0.2
- -0.2 - -0.1
- -0.1 - -0.05
- -0.05 - -0.01
- Minimal Impact
- 0.01 - 0.05
- 0.05 - 0.1
- 0.1 - 0.2
- 0.2 - 0.36
- No Longer Flooded
- Newly Flooded

J:\Jobs\1140\14\GIS\ArcMap\FRMS\_figures\RB\Figure27\_OptionFM\_RB02\_Flood\_Impact.mxd

FIGURE 28  
**OPTION FM - RB02**  
**10% AEP EVENT HAZARD IMPACT**



- Event First Flooded Above Floor Level**
- PMF Event
  - 0.2% AEP
  - 1% AEP
  - 2% AEP
  - 5% AEP
  - 10% AEP
  - 20% AEP
  - 50% AEP
  - Not Flooded
  - No Longer Flooded Above Floor Level in 10% AEP
- Upgraded Pipes
- Newly High Hazard (Prev. Low Hazard)
  - Low Hazard (Unchanged)
  - High Hazard (Unchanged)
  - Newly Low Hazard (Prev. High Hazard)

J:\Jobs\1140\14\GIS\ArcMap\FRMS figures\RB02\Figure28 OptionFM RB02 Hazard Impact.mxd

0 50 100 m

FIGURE 29  
TAYLOR STREET HOTSPOT  
1% AEP EVENT

